



# FITTING INSTRUCTIONS

Part Number: **3938040 F/KITS: 6173662 & 6173669.**

Product Description: **S/BAR P/FINDER R50 – 99-05 NFO W/T&B 8-9.5**

Suited to vehicle/s: **NISSAN PATHFINDER 2/99 ON**

Optional Fitting Kit: **3500590 – ARB FFR FOG LIGHT KIT.  
3500640 - ARB AUX FOG LIGHT ADAPTOR  
3500530 – ARB AUX FOG LIGHT LOOM - NON FACTORY FOG LAMP VEHICLES.  
3500680 – FOG LAMP HOUSING CLEAR LENSE KIT.**

## WARNING

### REGARDING VEHICLES EQUIPPED WITH SRS AIRBAG:

When installed in accordance with these instructions, the front protection bar does not affect operation of the SRS airbag.

### ALSO, NOTE THE FOLLOWING:

- ◆ This product must be installed exactly as per these instructions using only the hardware supplied.
- ◆ In the event of damage to any bull bar component, contact your nearest authorised ARB stockist. Repairs or modifications to the impact absorption system must not be attempted.
- ◆ Do not use this product for any vehicle make or model, other than those specified by ARB.
- ◆ Do not remove labels from this bull bar.
- ◆ This product or its fixing must not be modified in any way.
- ◆ The installation of this product may require the use of specialized tools and/or techniques
- ◆ It is recommended that this product is only installed by trained personnel
- ◆ These instructions are correct as at the publication date. ARB Corporation Ltd. cannot be held responsible for the impact of any changes subsequently made by the vehicle manufacturer
- ◆ During installation, it is the duty of the installer to check correct operation/clearances of all components
- ◆ Work safely at all times
- ◆ Unless otherwise instructed, tighten fasteners to specified torque

## **ARB 4x4 ACCESSORIES**

### Corporate Head Office

42-44 Garden St  
Kilsyth, Victoria  
AUSTRALIA 3137

Tel: +61 (3) 9761 6622  
Fax: +61 (3) 9761 6807

Australian enquiries  
North & South American enquiries  
Other international enquiries

sales@arb.com.au  
sales@arb.com.au  
exports@arb.com.au

**www.arb.com.au**

# GENERAL CARE AND MAINTENANCE

By choosing an ARB Bar, you have bought a product that is one of the most sought after 4WD products in the world. Your bar is a properly engineered, reliable, quality accessory that represents excellent value. To keep your bar in original condition it is important to care and maintain it following these recommendations:

- Prior to exposure to the weather your bar should be treated to a Carnauba based polish on all exposed surfaces. It is recommended that this is performed on a six monthly basis or following exposure to salt, mud, sand or other contaminants.
- As part of any Pre Trip Preparation, or on an annual basis, it is recommended that a thorough visual inspection of the bar is carried out, making sure that all bolts and other components are torqued to the correct specification. Also check that all wiring sheaths, connectors, and fittings are free of damage. Replace any components as necessary. This service can be performed by your local authorized ARB Stockist.

## FITTING REQUIREMENTS



### IMPORTANT:

- This winch bumper is suitable for Warn 8,000lb, 9,000lb & 9,500HS winch only.

### REQUIRED TOOLS FOR FITMENT OF PRODUCT:

<b>METRIC SOCKET SET</b>	<b>METRIC RING AND OPEN ENDED SPANNER SET</b>
<b>ELECTRIC DRILL 13 MM CAPACITY</b>	<b>6.5mm or 1/4" DRILL BIT</b>
<b>BASIC TOOL KIT</b>	<b>PHILLIPS AND FLAT BLADE SCREW DRIVER SETS</b>
<b>TORQUE WRENCH (or WRENCHES Capable of covering from 3NM – 77NM)</b>	<b>BLACK SILICONE BASED RUBBER ADHESIVE OR SIKAFLEX</b>
<b>FELT TIP MARKER PEN</b>	<b>METRIC TAPE MEASURE or RULE</b>
<b>SCISSORS or SHARP KNIFE</b>	

### HAVE AVAILABLE THESE SAFETY ITEMS WHEN FITTING PRODUCT:

Protective eyewear		Hearing protection	
--------------------	---	--------------------	---

**NOTE: 'WARNING' notes in the fitting procedure relate to OHS situations, where to avoid a potentially hazardous situation it is suggested that protective safety gear be worn or a safe work procedure be employed. If these notes and warnings are not heeded, injury may result.**

### FASTENER TORQUE SETTINGS:

SIZE	Torque Nm	Torque lbft
M6	9Nm	7lbft
M8	22Nm	16lbft
M10	44Nm	32lbft
M12	77Nm	57lbft

## PARTS LISTING

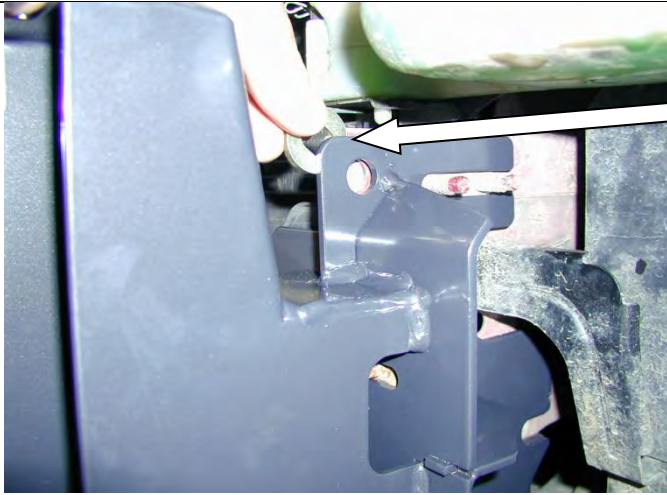
APPLICATION.	PART No.	QTY	DESCRIPTION
BUFFER FITMENT	6151128	12	NUT FLANGE M6
	3162153	1	BUFFER LHS
	3162154	1	BUFFER RHS
FOG LAMP HOUSINGS TO BULL BAR	3163082	1	FOG LAMP HOUSING KIT
SAHARA TUBE FITMENT	6151255	2	SET SCREW M12x1.75x40 HDZPCL8.8
	4581049	2	WASHER FLAT M12
	4581050	2	WASHER SPRING M12
	6131174	1	SAHARA TUBE
MOUNT ASSY TO VEHICLE	3751859L	1	BKT IMPACT ABSR PATHFINDER 99 ON
	3751859R	1	BKT IMPACT ABSR PATHFINDER 99 ON
	4581011	2	WASHER FLAT M12 x 27 x 4mm ZP
WINCH	4581044	4	WASHER FLAT 3/8"
ROLLER FAIRLEAD FITMENT	4581049	4	WASHER FLAT M12
CONTROL BOX FITMENT	3751809	1	BRKT CONTROL BOX MOUNT
	6151017	2	BOLT M6 x 16mm
	6151128	4	NUT FLANGE M6
	180302	5	CABLE TIE
WINCH COVER FITMENT	6151128	2	NUT FLANGE M6
	6151256	2	SCREW M6x16 S/STEEL BUTTON HEAD
	6191001	1	WINCH COVER EXTRUSION
	6521031	1	WINCH COVER
	4581304	2	WASHER FLAT M6 S/S
WINCH BUMPER TO MOUNT ASSEMBLY	6151255	6	SET SCREW M12x1.75x40 HDZPCL8.8
	4581050	6	WASHER SPRING M12
	4581007	6	WASHER FLAT M12 LARGE
NUMBER PLATE FITMENT	6151017	2	BOLT M6 x 16mm
	6151128	2	NUT FLANGE M6
	6781408	1	TAPE DOUBLE SIDED
RUBBER EXTRUSION FITMENT	6821116	16	SQUARE PLASTIC PLUG
	6151176	16	SCREW SELF TAPPING 12mm 8G
	6191002	2	EXTRUSION
	3193649	2	MOUNT STRIPS
CB AERIAL PLUGS	3162152	2	CAP CB AERIAL HOLE
WING BRACE – BAR TO VEHICLE	3756195L	1	BRACE WING
	3756195R	1	BRACE WING
	6151256	2	BOLT M6 BUTTON HEAD S/STEEL
	6151017	2	BOLT M6 x16mm HEX HEAD
	6151128	4	NUT M6 FLANGE
	4581072	4	WASHER 1/4" x 3/4" x 16G FLAT ZP

## FITTING PROCEDURE – PREPARATION TO VEHICLE

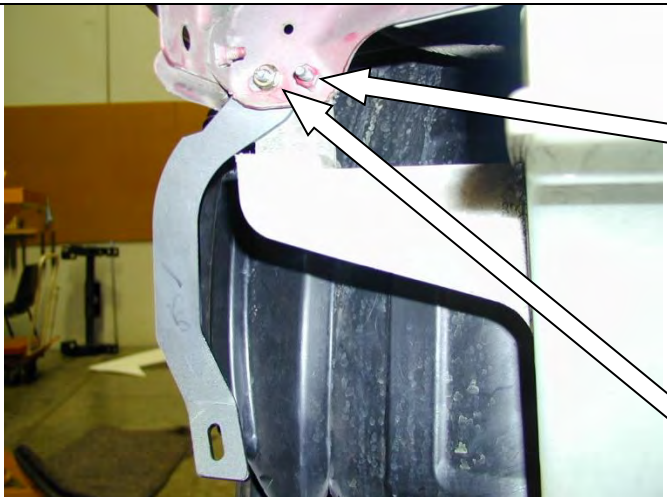


1. Remove the bumper bar from the vehicle.
2. Remove inner guard trims, left and right.
3. Remove Tow Hooks.
4. Remove Impact Absorbers.

**NOTE:** Set aside all original mounting hardware and inner guard trims.



5. Mount the Impact Absorber brackets to each side of the chassis using original fasteners. Fit spacer washer 27 x 12 x 4mm to top hole of brace and fasten.



6. Fasten the wing braces to the vehicle using M6 Hex bolts, washers and flange nuts.
7. On the driver's side undo washer bottle and carefully cut off the retaining hook with a sharp blade.
8. Pass the wing support brace between the bottle and the body aligning the holes.
9. Replace the original bolt, clamping the brace in place.
10. Using a 6.5mm or ¼" drill, drill through washer bottle bracket using the brace hole as a guide.
11. Fasten with M6 Hex head bolt and flange nut.

**Note:** - On passenger side use panel washers 19x7x1.6mm.



## PREPARATION TO VEHICLE (CONTINUED)

### 12. For vehicles with Factory Fog lamps:

Connect RH & LH Fog Lamp wiring using 3500640-ARB Aux fog light adaptor and connect to Factory Fog Lamp loom.

### For vehicles without Factory Fog lamps:

Connect RH & LH Fog Lamp wiring using Fog Light Wiring Loom kit – 3500530.

13. Allow the Fog Light looms to hang freely for connection to the bull bar Fog Lights at Step 48.

## PREPARATION TO BULL BAR



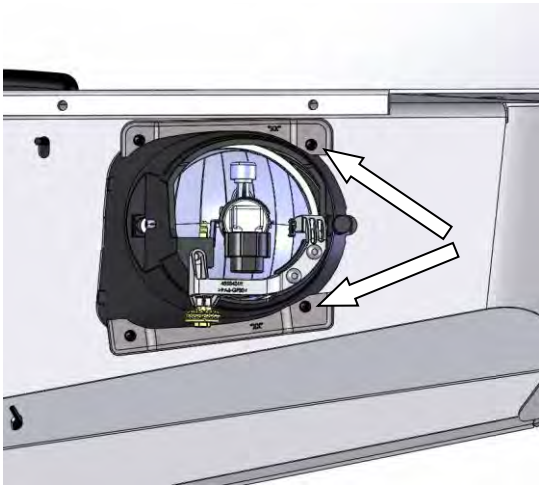
14. Insert the side buffers through the holes and fix using the M6 flange nuts. (Do not over tighten). (RH shown).



15. Fit fog lamp housings (3163082) into the bull-bar fog lamp cutouts as shown. (RH Shown).

If fitting fog lights refer to fitting instructions (3789190) in the fog lamp housing kit (3163082) for details before mounting the housings in the bull-bar.

## PREPARATION TO BULL BAR (Continued)



16. Secure into position as indicated using the 2 x fog lamp clamps and 4 x self-tapping screws.


**(RH Clamps Part No. 3759115R).  
(LH Clamps Part No. 3759115L).**

**Note: Shown with generic Fog Lamp fitted in this view.**



17. Push the top Sahara tube through the hole in the buffer and fasten using the M12 x 40mm bolts, washers and spring washers.

**Torque to specification.**

 M12 - 44 Nm.

## NON-WINCH FITMENT ONLY



**IF FITTING A WINCH MOVE ON TO STEP 22.**


18. Wrap rubber extrusion around the winch cover and trim excess.

19. Place spacer washers over the winch cover fixing holes, located on the top face of the winch bumper.

20. Place the winch cover on top of the winch bumper in line with the mount holes.

Bolt together using the M6 button head stainless steel screws and M6 nuts.

**Torque to specification.**

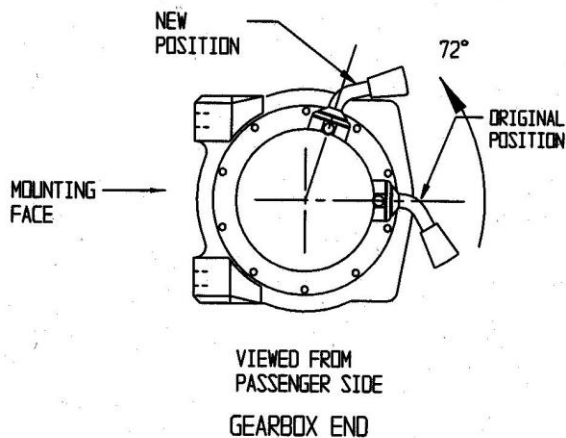
 M6 - 9 Nm.

## NON-WINCH FITMENT ONLY (Continued)



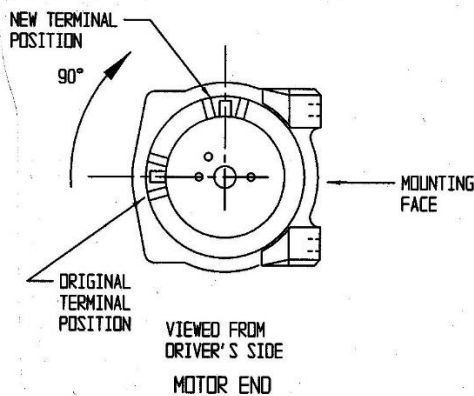
21. Bolt the number plate through the top holes using M6 X 16mm bolts and M6 flange nuts. If desired double sided tape can be used down the sides of the number plate.

## WINCH FITMENT ONLY



22. To place the winch clutch handle in a convenient location the winch gearbox must be rotated 2 hole spacings, 72 degrees, in an anti-clockwise direction when viewed from the gearbox end. Place the winch on its end and remove all gearbox bolts. Gently raise the gearbox just enough to rotate it. Do not completely remove the gearbox and avoid damaging the gasket. Refit all bolts and tighten.

**NOTE: To avoid un-meshing the gears take care not to lift the assembly more than a couple of millimetres while rotating to the desired position.**



23. To place the winch motor in the correct location the winch motor must be rotated 90 degrees, in a clockwise direction when viewed from the motor end. Place the winch on its end and remove the 2 motor retaining bolts. Gently raise the motor just enough to rotate it. Do not completely remove the motor and avoid damaging the gasket. Refit all bolts and tighten.

**NOTE: To avoid un-meshing the gears take care not to lift the assembly more than a couple of millimetres while rotating to the desired position.**



24. Bolt the winch and roller fair lead to the bar using the bolts supplied. The longer bolts are used for the two bottom holes through the roller fair lead.

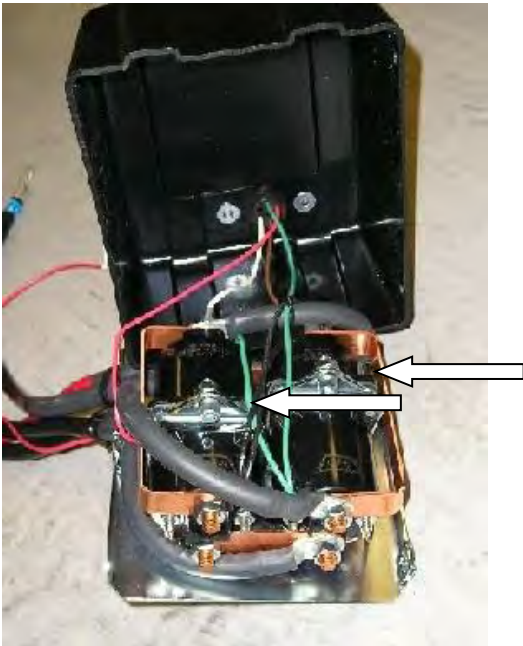
## WINCH FITMENT ONLY (Continued)

25. If fitting the **XP 9.5 winch**, remove the cover from the control box.

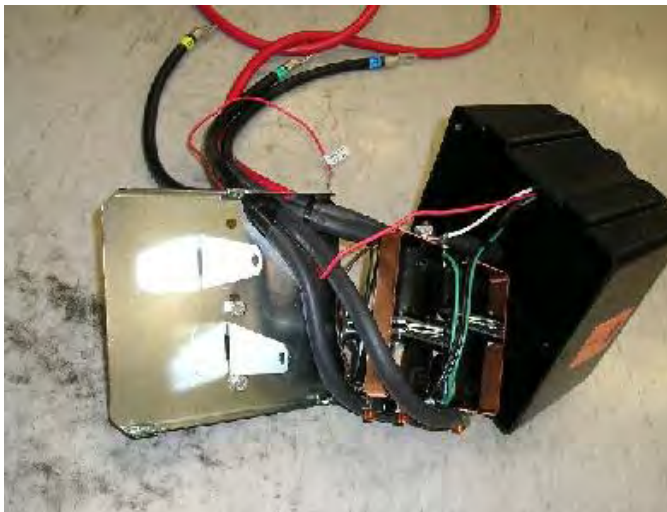
**For any other winch, go to step 32.**



26. Remove the two cap screws, nuts and spacer washers that hold the four solenoids in place.



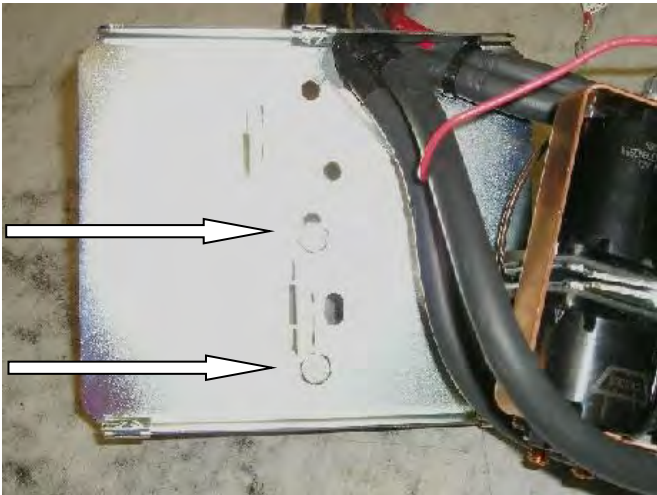
27. Remove the four solenoids from the base of the control box using the copper bus bar as an aid and hold to one side.



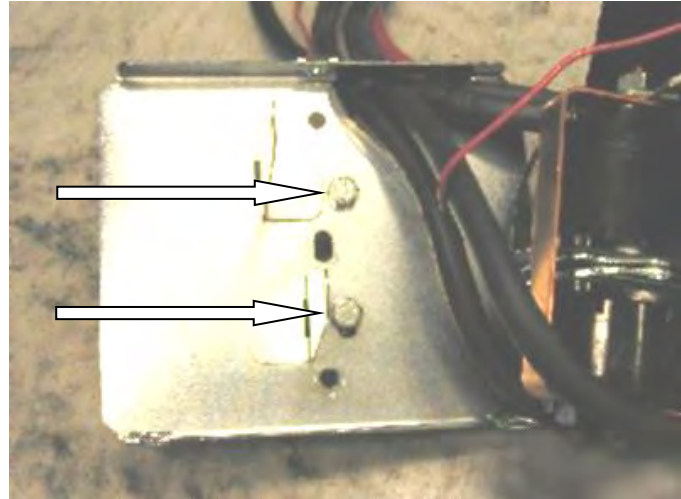


## WINCH FITMENT ONLY (Continued)

28. Remove the two bolts in the base of the control box and reposition them into the more centralised holes.

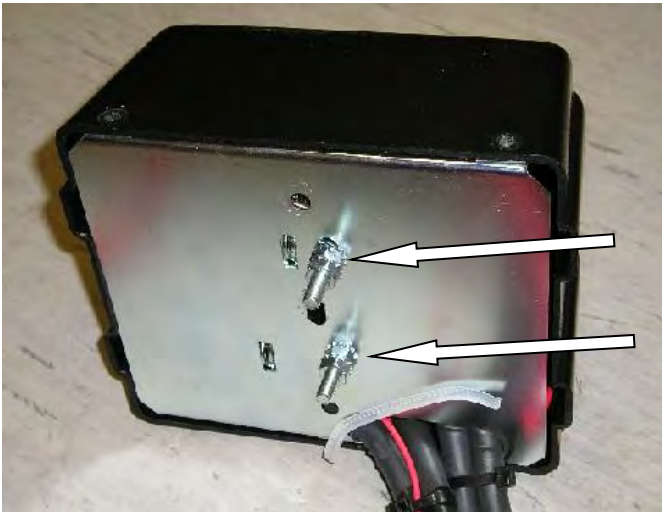


**BEFORE**



**AFTER**

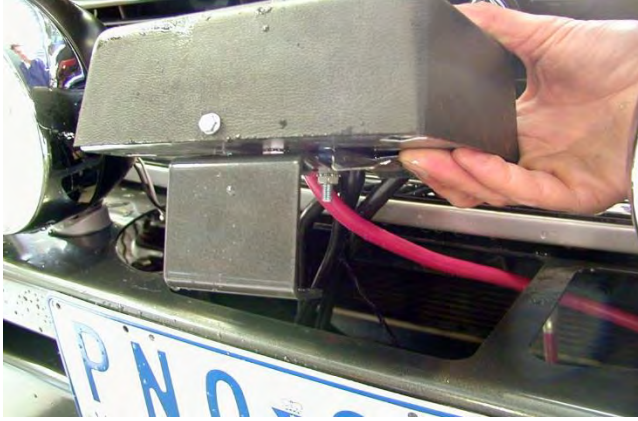
29. Place the 4 solenoids over the 2 metal stands that are facing upwards. Make sure they line up with the holes in the base.



30. Replace the 2 cap screws, washers and nuts removed in Step 32 into the original holes.  
31. Replace the black cover and refit the three cover screws (DO NOT OVER TIGHTEN).



## WINCH FITMENT ONLY (Continued)



32. Install the winch and roller fairlead using bolts, nuts and spring washers supplied by Warn, and the 4 x 3/8" flat washers supplied in the bolt kit. Refer to Warn installation instructions for correct procedure. Adjust winch in slots until the winch is centralised in the bull bar.

33. Assemble the control box bracket to the control box using M6 flange nuts.

34. Mount the control box to the bar using M6 X 16 bolts and M6 flange nuts.

**NOTE: The gearbox is on the passenger side for the 8,000lb and 9,000lb. The cable spools from the bottom for the two winches mentioned.**



35. Peel off one side of the double sided tape and adhere to the top rear side of the number plate. Note: Clean the adhering surfaces before applying tape with an alcohol solvent.

36. Peel off the other side of the tape and bolt to the winch bumper with the M6 X 16mm bolts and M6 flange nuts through the lower holes of the number plate.

37. Press firmly to the top of the number plate so the tape can properly adhere.

## PREPARATION TO BULL BAR (Continued)



38. The rubber extrusion contains a support section to assist in the moulding. Remove this section by tearing at one end. Discard this section.

39. Insert the square plastic plugs into the square holes on the top face of the wing.

## PREPARATION TO BULL BAR (Continued)



40. Insert the mount strips inside the channel section of the rubber extrusion. Make sure the flap section is on the outer side. Allow generous even amounts of excess at either end of the strip so that it can be trimmed later.

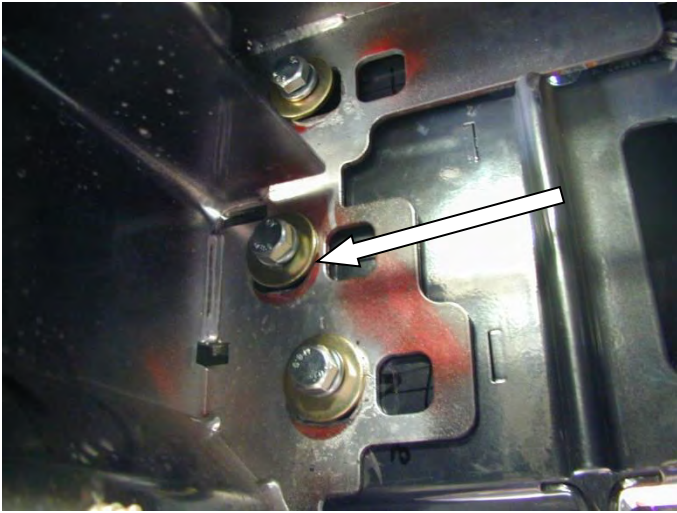


41. Using a Phillips head screw driver or cordless drill with a Phillips head tip fix the extrusions to the top of the wings using the self-tapping screws.



42. Using a sharp knife cut the excess rubber in line with the inside end of the wing. Only cut the inside excess, the other end will be cut when the winch bumper is fitted.

## BULL BAR FITMENT TO VEHICLE

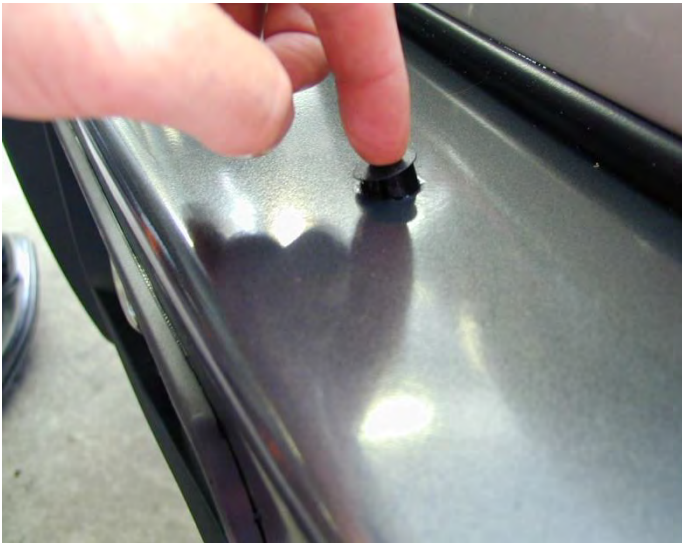


43. With the aid of another person (two people if fitting a winch) and carefully place the bar on the mounting brackets.
44. Horizontally and vertically align the bar to the body and fasten using the six M12 x 40mm bolts, large washers and M12 spring washers. Tighten all bolts so as the large washer deforms inside the rectangular cut-out.

**Torque to specification.**



M12 - 77 Nm.



45. There are two 16mm dia. holes located on the top face of the bar. If no CB aerials are to be fitted the holes can be covered with the plastic plugs provided in the fitting kit.



**(If fitting with a winch).**

46. Feed the winch cable through the roller fair lead. Mount the hook to the end of the cable.

## BULL BAR FITMENT TO VEHICLE (Continued)

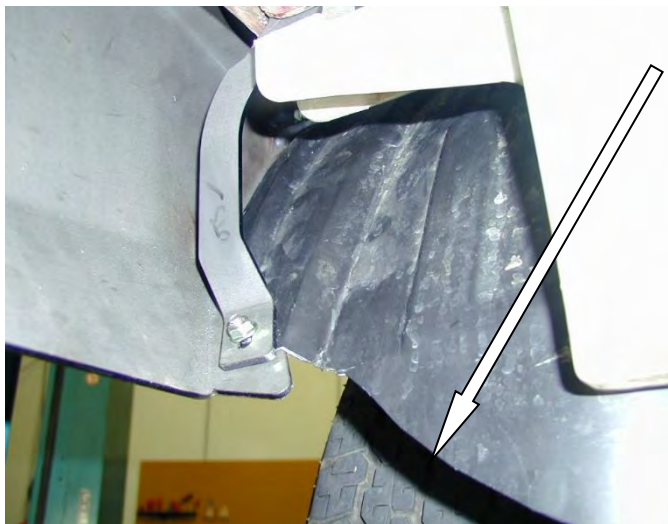
47. If fitting fog lights connect the bumper fog light loom, fitted at Steps 12-13, to the main vehicle loom.

- **Cable-tie all wiring and wiring looms into safe and convenient locations.** Ensure that all cables are installed well clear of all sharp or moving parts using cable-ties from the bolt kit.
- **Check that all lights work correctly.**
- **Check and test winch if installed.**



48. To replace inner guard trims, reposition on the vehicle and mark out the edge of the bullbar wing  
49. Using a sharp knife or scissors trim and refit the guard allowing enough to drill and position to the bar.

**Note: - The trim will sit between the wing brace and the bull bar wing.**



50. Trim off excess plastic as shown.

51. With the trim between the brace and the wing mark, via the hole in the wing, mark with a felt tip pen or a scribe.

52. Remove the trim and drill using 6.5mm or 1/4" drill bit.

53. Reposition on the vehicle and fasten using dome head s/steel bolts and flange nuts.



54. (If fitting with a winch).

**Connect the long winch + & - cables to the vehicle after the bar is installed.**

Refer to the Warn winch manual for vehicle wiring instructions.

**Ensure that these cables are installed well clear of sharp, hot or moving objects. Secure the winch cables to the vehicle and winch bumper with the supplied cable ties.**

## ONCE BAR IS FITTED:

- ◆ Ensure all bolts are tensioned correctly
- ◆ All wiring is clear of sharp edges or moving surfaces and secured properly
- ◆ Piping is secured well away from sharp or moving components
- ◆ Check operation of winch if fitted
- ◆ Check all wiring and connections to turn signal lamps, sensors, headlamp washers etc. are functioning correctly.