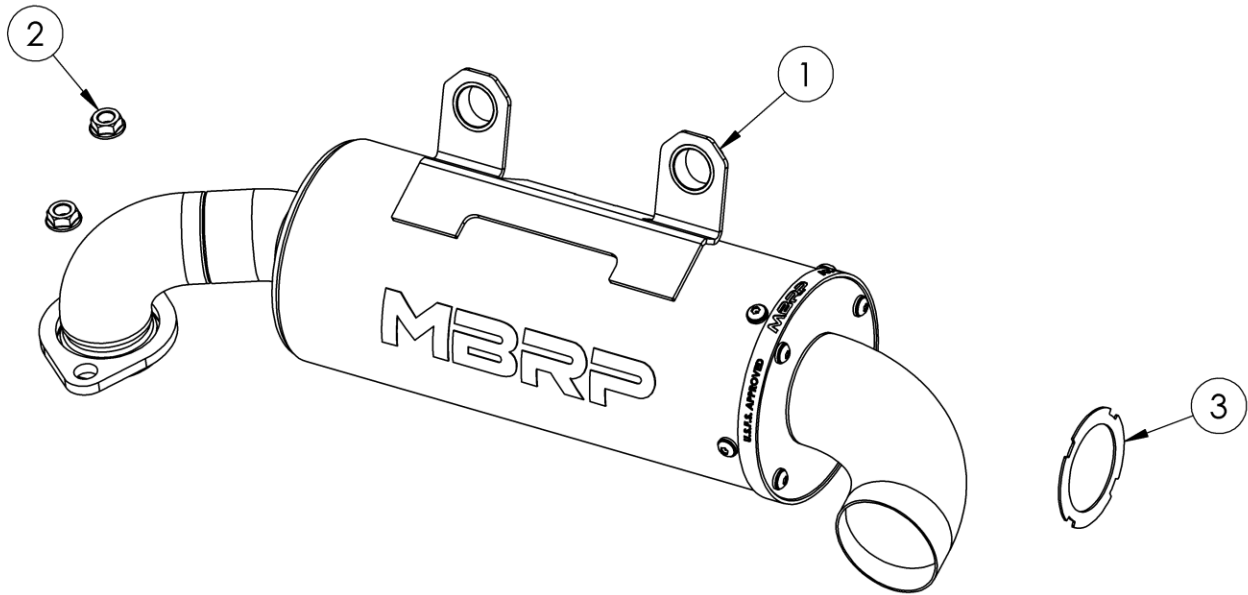


# AT-9802PT

SLIP-ON PERFORMANCE MUFFLER, 5"  
2017-2019 CFMOTO ZFORCE 1000 EPS  
(DOES NOT FIT 2019.5 & UP MODELS WITH WELDED  
INLET FLANGE & SIDE TOP MOUNTS)

# MBRP



ITEM NO.	DESCRIPTION	QTY.
1	MUFFLER ASSEMBLY	1
2	HEX FLANGE NUT	2
3	SPACER INSERT	1

## PLEASE READ BEFORE STARTING INSTALLATION

While MBRP Ltd. has made every effort to ensure that all components of this system are of superior quality and properly packaged, it is the installer's responsibility to ensure the following before removal of the factory exhaust:

- that ALL components shown above are present.
- that ALL mating components fit together.
- that there are no damaged components.
- that the system you have purchased is appropriate for your vehicle year, model and configuration.
- that the system will not interfere with any modifications previously installed or planned.
- that you have read and understand these instructions.

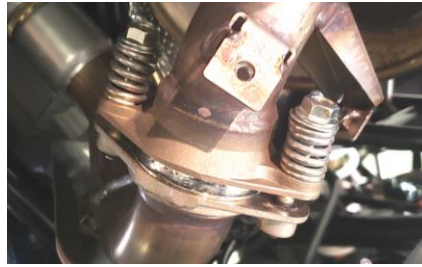
If you have any questions or are uncertain about any aspect of the installation of this system to your vehicle please contact your dealer before commencing installation.

# MBRP

**\*Note:** This system **does NOT** fit late 2019 models with the welded inlet flange and side top mounts, as pictured below.



Figure 1



## Removal of Stock Exhaust:

1. Remove the heat shield covering the muffer inlet connection.
2. Remove the two (2) bolts and springs securing the muffer inlet flange. Do not discard. **Refer to Figure 1.**
3. Remove the bottom stabilizer bracket by removing the two (2) screws attaching it to the rear frame. **Refer to Figure 2.** It may be helpful to loosen or partially remove the plastic lower rear fascia piece to access the screws.
4. Remove the two (2) bolts from the upper muffer mounts and then remove the muffer from the passenger side of the vehicle. It is helpful to jack the rear of the vehicle up to gain clearance to the tire when taking the muffer out. It is also helpful to have a second person to assist in maneuvering the muffer out.
5. Finally, ensure that the muffer gasket remains in place on the exhaust pipe.



Figure 2



Figure 3

## Installation of MBRP Exhaust:

1. Remove the two (2) steel mounting sleeves and the rubber isolators from the stock muffer mounts (it is helpful to first lubricate the isolators for removal), and install them into the mounting holes on the **Muffer Assembly**. **Refer to Figure 3.**
2. Slide the new **Muffer Assembly** into position with the inlet over the gasket of the exhaust front pipe.
3. Reuse the stock bolts to secure the upper mounts of the **Muffer Assembly** to the vehicle. Do not fully tighten yet.
4. Using the supplied **Hex Flange Nuts**, reinstall the inlet screws and springs through the inlet flange and tighten them to secure the muffer inlet to the exhaust pipe. **Refer to Figure 4.**
5. Finally, fully tighten the upper mounting bolts.

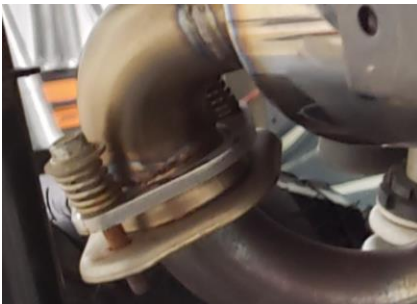


Figure 4

**It is recommended that the muffer screws (including the end cap and tip screws) be retightened after the first ride (60in-lbs) and checked periodically thereafter, tightening if necessary.**

**Note:** This muffer utilizes a quiet insert (pre-installed) to limit sound levels. If increased exhaust flow is desired, replace the quiet insert with the **Spacer Insert** by removing the muffer tip and the spark arrestor. Reinstall the spark arrestor with the **Spacer Insert**. Note that tuning may be required for optimal performance with the increase in flow capacity.

**Congratulations!** You are ready to begin experiencing the improved performance and driving excitement of your MBRP ATV Exhaust upgrade. We know you will enjoy your purchase.



Figure 5



**Figure 1**



**Figure 2**



**Figure 3**



**Figure 4**

## Spark Arrestor Maintenance

In order to maintain optimal performance, the spark arrestor screen should be cleaned after the initial 3 hours. Afterwards clean every 30-35 hours of use.

## Clean-out Instructions:

Make sure the vehicle is cool before completing the clean-out procedure.

1. Using a 4mm hex key, remove the 4 screws securing the outlet cap or tip. **(Figure 1)**
2. Remove the outlet cap to expose the spark arrestor screen insert. **(Figure 2)**
3. Remove the screen insert. **(Figure 3)**
4. Using a wire brush, thoroughly brush the screen to remove residue. **(Figure 4)**
5. Replace the screen and cap.
6. Tighten the screws to 60 in-lbs (6.8 Nm).