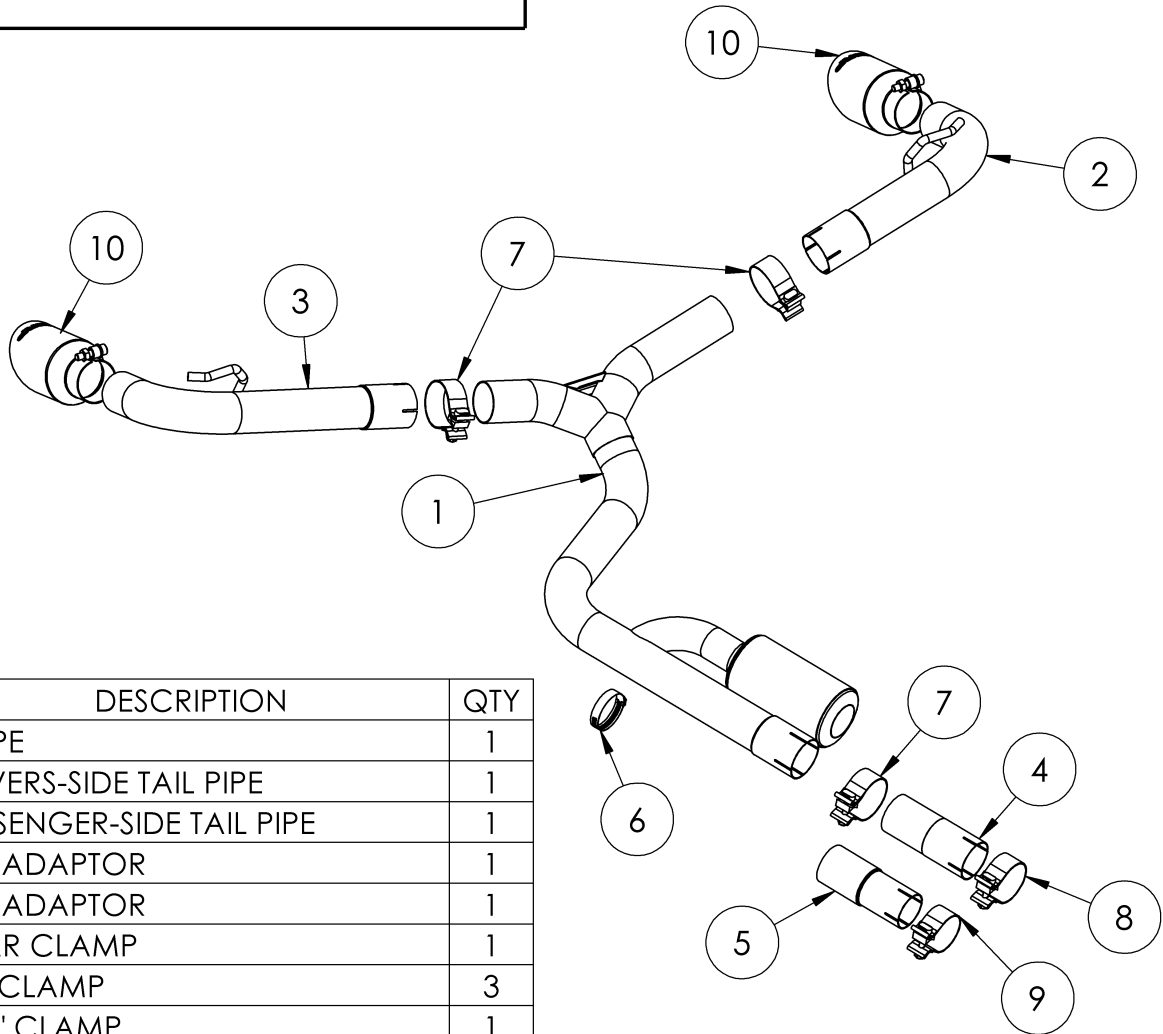


# S5207

2021-UP FORD BRONCO SPORT, 2.0L/1.5L,  
RESONATOR-BACK, 2.5" DUAL SPLIT REAR

# MBRP®



ITEM	DESCRIPTION	QTY
1	Y-PIPE	1
2	DRIVERS-SIDE TAIL PIPE	1
3	PASSENGER-SIDE TAIL PIPE	1
4	2.0L ADAPTOR	1
5	1.5L ADAPTOR	1
6	GEAR CLAMP	1
7	2.5" CLAMP	3
8	2.38" CLAMP	1
9	2.17" CLAMP	1
10	TIP	2

Refer to this LOT NUMBER when contacting customer service: \_\_\_\_\_

## PLEASE READ BEFORE STARTING INSTALLATION

While MBRP has made every effort to ensure that all components of this system are of superior quality and properly packaged, it is the installer's responsibility to ensure the following before removal of the factory exhaust:

- that ALL components shown above are present.
- that ALL mating components fit together.
- that there are no damaged components.
- that the system you have purchased is appropriate for your vehicle year, model and configuration.
- that the system will not interfere with any modifications previously installed or planned.
- that you have read and understand these instructions.

If you have any questions or are uncertain about any aspect of the installation of this system to your vehicle please contact your dealer before commencing installation.

# MBRP

## Removal of Stock System



**Figure 1**



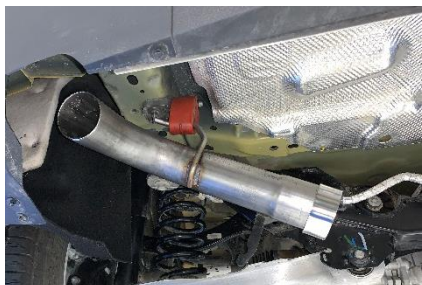
**Figure 2**



**Figure 3**



**Figure 4**



**Figure 5**

1. Apply a penetrating lubricant liberally to all hangers and rubber isolators.
2. Remove the heat shield located directly behind the factory resonator by cutting the straps.  
**Refer to Figure 1.**
3. Measure 17.25" from the rear face of the resonator, mark and cut.  
**Refer to Figure 2.**
4. Remove the drivers-side hanger bracket.  
**Refer to Figure 3.**
5. Slide the muffler out of the passenger-side rubber isolator and remove the muffler from the vehicle.

## Installation of MBRP Performance Exhaust:

1. Reattach the driver-side hanger bracket.
2. Determine which adaptor pipe is required for your vehicle. The **1.5L Adapter** is smaller than the **2.0L Adapter**. The 1.5L requires a **2.17" Clamp** and the 2.0L requires a **2.38" Clamp**. Slide the appropriate **Adaptor Pipe** and **Clamp** onto the vehicle, do not tighten.  
**Refer to Figure 4.**
3. Install the **Drivers-Side Tail Pipe** and **Passenger-Side Tail Pipe** into the factory isolators. Slide **2.5" Clamps** on the end of each.  
**Refer to Figures 5&6.**

# MBRP

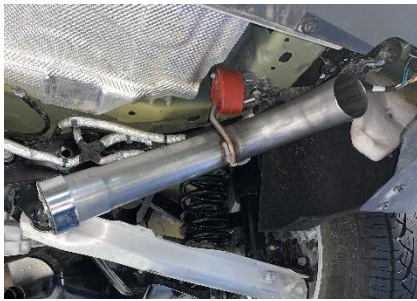


Figure 6

4. Slide a **2.5" Clamp** onto the **Y-Pipe** and slide onto the already installed adaptor then into the **Passenger-Side Tail Pipe** and the **Drivers-Side Tail Pipe**.

Refer to **Figure 7**.

5. Take the factory heat shield that was removed and install it onto the **Y-Pipe** with the supplied **Gear Clamp** and the **2.17" Clamp** or **2.38" Clamp** that will also be used to clamp the **Adaptor Pipe** onto the vehicle.

Refer to **Figure 8**.



Figure 7

6. Slide the **Tips** onto the **Tail Pipes** and adjust to your liking.

Refer to **Figures 9&10**.

7. Align the edge of each band clamp with the edge of the joint it is connecting. Tighten all hardware and clamps, starting at the front and working rearward to secure the system. Check along the full length of the exhaust system to ensure there is adequate clearance for fuel lines, vent lines, brake lines, frame, bodywork, suspension, and any wiring, etc. If there is any interference detected, relocate, or adjust to provide adequate clearance. Ensure all clamp connections are secure and components are unable to rotate or slide. Band clamps require approximately 45 lb-ft (60 N-m) of torque. Verify clearances, system security and band clamp torque after 30- 60 miles (50-100 km) of driving.



Figure 8

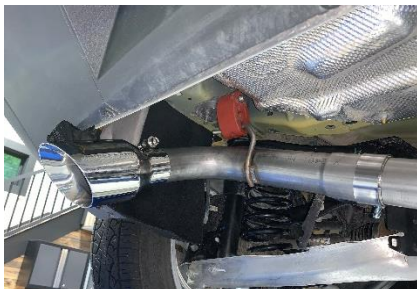


Figure 9



Figure 10



**Congratulations!** You are ready to begin experiencing the improved power, sound and driving experience of your **MBRP** performance exhaust system. We know you will enjoy your purchase.