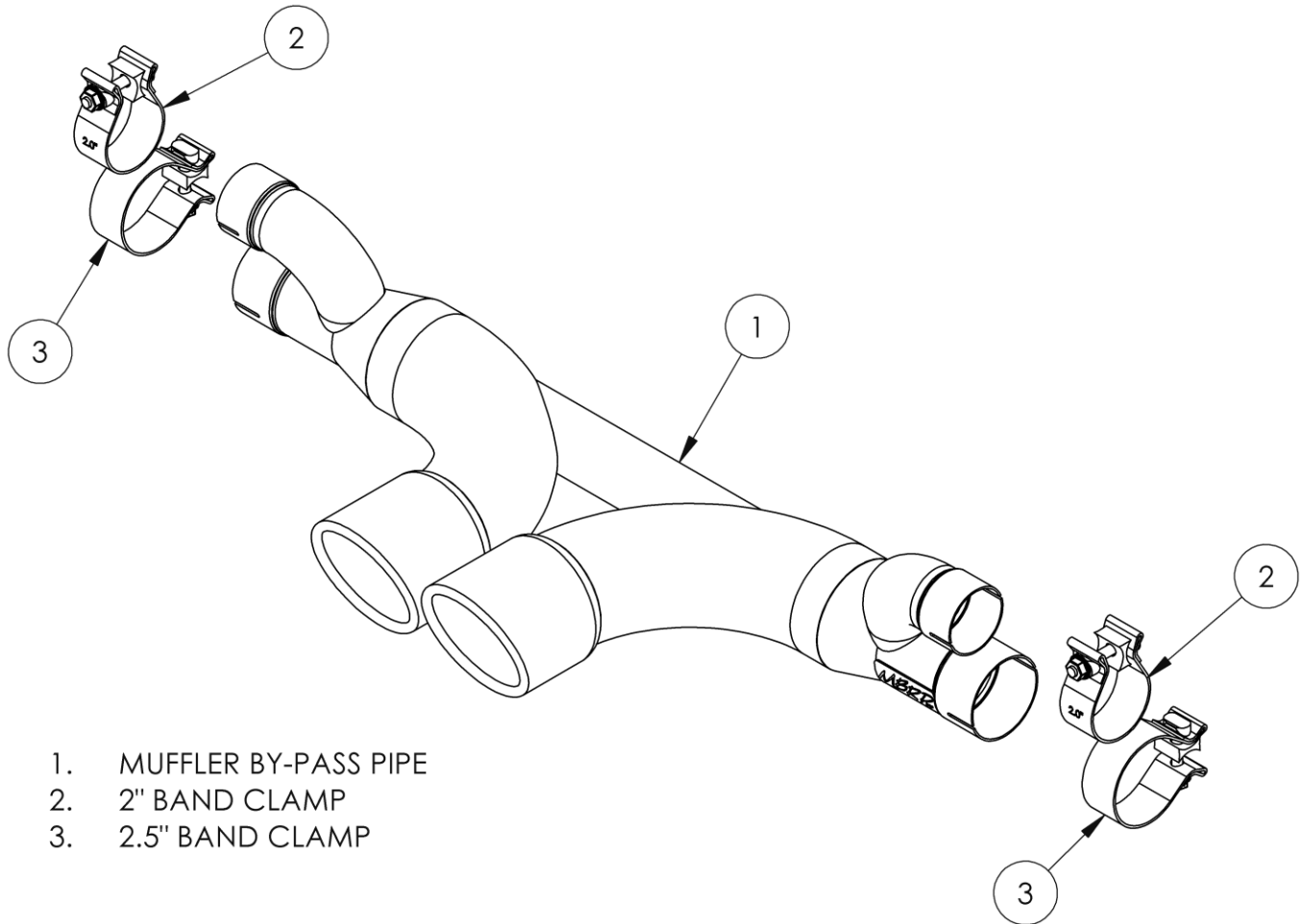


S7607

2014-2019 PORSCHE 991/911 GT3, GT3RS
2017 PORSCHE 991/911 R
2019 PORSCHE 991/911 SPEEDSTER
3.8L/4.0L, MUFFLER BY-PASS

MBRP®



1. MUFFLER BY-PASS PIPE
2. 2" BAND CLAMP
3. 2.5" BAND CLAMP

PLEASE READ BEFORE STARTING INSTALLATION

While MBRP has made every effort to ensure that all components of this system are of superior quality and properly packaged, it is the installer's responsibility to ensure the following before removal of the factory exhaust:

- that ALL components shown above are present.
- that ALL mating components fit together.
- that there are no damaged components.
- that the system you have purchased is appropriate for your vehicle year, model and configuration.
- that the system will not interfere with any modifications previously installed or planned.
- that you have read and understand these instructions.

If you have any questions or are uncertain about any aspect of the installation of this system to your vehicle please contact your dealer before commencing installation.

MBRP®

Removal of Stock System:



Figure 1

1. Apply a penetrating lubricant liberally to all threaded fasteners.

2. Remove engine under-cover.

3. Remove the factory tip assembly.

Refer to Figure 1.

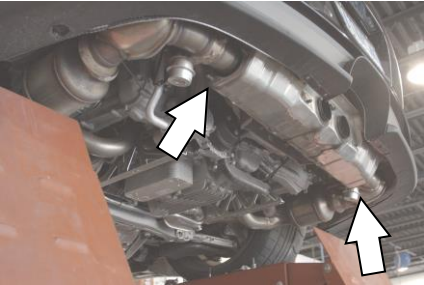


Figure 2

4. Remove the flange nuts from each of the four flanges on the stock center-muffler.

Refer to Figure 2.

5. Remove the factory V-band clamps between the catalytic converters and the side-mufflers.

Refer to Figure 3.

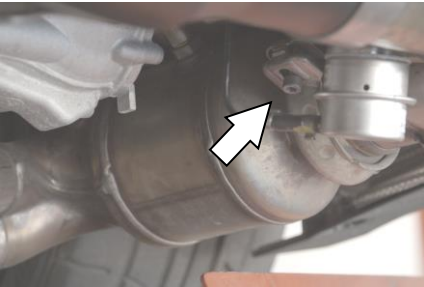


Figure 3

6. Remove the side-muffler mounting bracket hardware on both sides. This will allow you to push the side mufflers outward to allow removal of the center-muffler

Refer to Figure 4.

7. Remove the two center-muffler mounting straps from the muffler and brackets.

8. Move the center-muffler to one side to allow the side-muffler pipes on the opposite side to be removed then tilt the muffler down and remove it from the other side.

Refer to Figure 5.



Figure 4

9. Remove the factory gaskets and flanges from the side-mufflers.

10. **Optional** – remove the factory center-muffler mounting bracket. It is not required with the new exhaust.



Figure 5

MBRP®

Installation of MBRP Performance Exhaust:



Figure 6



Figure 7



Figure 8

1. Place one **2" Clamp** and one **2.5" Clamp** on each end of the **Muffler By-pass Pipe**.

Refer to Figure 6.

2. Place one end of the **Muffler By-Pass Pipe** onto both pipes of one of the side-mufflers. Level the **Muffler By-Pass Pipe** and repeat on the other side.

Refer to Figure 7.

3. Ensure there is adequate insertion of the factory side-muffler pipes into the **Muffler By-Pass Pipe**. The factory pipes should extend past the slots in the **Muffler By-Pass Pipe**. Snug, but do not completely tighten the **2.5" Clamps**.

4. Level and then center the exhaust tips in the fascia opening.

Refer to Figure 8.

5. Carefully align the system and tips. Align the edge of each band clamp with the edge of the joint it is connecting. Tighten all hardware and clamps, starting at the front and working rearward to secure the system. Check along the full length of the exhaust system to ensure there is adequate clearance for fuel lines, vent lines, brake lines, frame, bodywork, suspension and any wiring, etc. If there is any interference detected, relocate or adjust to provide adequate clearance. Ensure all clamp connections are secure and components are unable to rotate or slide. Band clamps require approximately 45 lb-ft (60 N-m) of torque. Verify clearances, system security and band clamp torque after 30-60 miles (50-100 km) of driving.

6. Re-install the engine under-cover.



Congratulations! You are ready to begin experiencing the improved power, sound and driving experience of your **MBRP** performance exhaust system. We know you will enjoy your purchase.