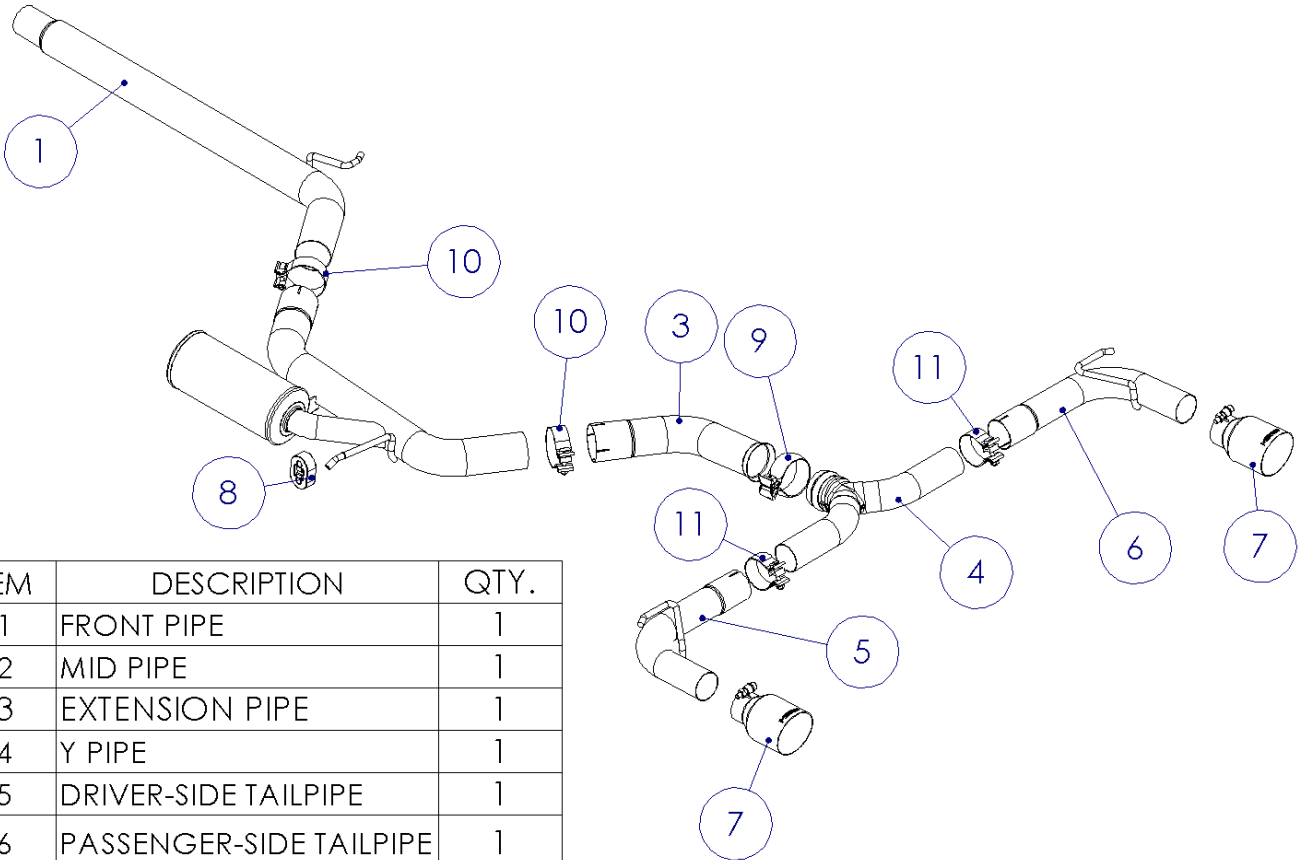


S4606

2015-2021 Volkswagen GOLF GTI,
MK7/MK7.5, 2.0L TURBO, Cat-Back, 3.0"
Dual Split Rear

MBRP®



ITEM	DESCRIPTION	QTY.
1	FRONT PIPE	1
2	MID PIPE	1
3	EXTENSION PIPE	1
4	Y PIPE	1
5	DRIVER-SIDE TAILPIPE	1
6	PASSENGER-SIDE TAILPIPE	1
7	TIP	2
8	ISOLATOR	1
9	3.0" SWIVEL CLAMP	1
10	3.0" CLAMP	2
11	2.5" CLAMP	2

PLEASE READ BEFORE STARTING INSTALLATION

While MBRP has made every effort to ensure that all components of this system are of superior quality and properly packaged, it is the installer's responsibility to ensure the following before removal of the factory exhaust:

- that ALL components shown above are present.
- that ALL mating components fit together.
- that there are no damaged components.
- that the system you have purchased is appropriate for your vehicle year, model and configuration.
- that the system will not interfere with any modifications previously installed or planned.
- that you have read and understand these instructions.

If you have any questions or are uncertain about any aspect of the installation of this system to your vehicle please contact your dealer before commencing installation.

MBRP



Figure 1



Figure 2



Figure 3



Figure 4



Figure 5

Removal of Stock System

1. Apply penetrating lubricant liberally to all exhaust fasteners, hangers and rubber isolators.
2. Loosen band clamp at the inlet of the OEM cat back exhaust.
Refer to Figure 1.
3. Remove crossmember located rearward of the OEM resonator.
Refer to Figure 2.
4. Remove the front and mid hangers from their rubber isolators. Leave both muffler hangers attached at this time.
5. Unbolt both rear muffler hangers from the vehicle and remove the complete cat back exhaust from the vehicle. Remove the OEM band clamp and both rear muffler hangers from the OEM cat back as these will be reused during the installation of your **MBRP** performance exhaust.
Refer to Figure 3.

Installation of MBRP Performance Exhaust

1. Using the OEM band clamp, install the **Front Pipe**. Do not fully tighten until all parts are installed. Install the hanger into the rubber isolator.
Refer to Figure 4.
2. If there is no OEM isolator present for the **Mid Pipe**, install the supplied **Isolator** onto the OEM hanger.
Refer to Figure 5.
3. Using a 3" **Clamp**, install the **Mid Pipe** onto the outlet of the **Front Pipe** and insert the hanger into the **Isolator**.
Refer to Figure 6.
4. Re-Install the previously removed crossmember.
5. Using a 3" **Clamp**, install the **Extension Pipe** onto the outlet of the **Mid Pipe**.

MBRP



Figure 6



Figure 7

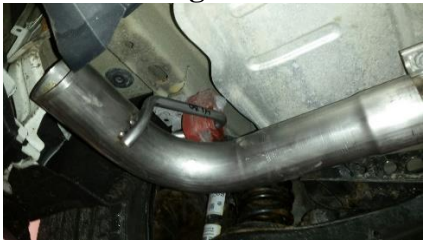


Figure 8



Figure 9

6. Using a **3" Swivel Clamp**, install the **Y-Pipe** onto the outlet of the **Extension Pipe**.

Refer to **Figure 7**.

7. Install one of the OEM muffler hangers onto the **Driver-Side Tailpipe** and install the assembly onto the **Y Pipe** with a **2.5" Clamp**. Secure the OEM hanger assembly to the vehicle with the previously removed bolt.

Refer to **Figure 8**.

Note: The OEM hanger assemblies have slotted mounting holes that can be used to center the tips in the rear fascia when the installation is complete.

8. Repeat Step 6 for the **Passenger-Side Tailpipe**.

Note: This system requires different tailpipe positions for MK7/MK7.5 installations. Adjust the tailpipe positions on the Y Pipe to center the tips in the rear fascia.

9. Install the **Tips** and align to your preference.

Refer to **Figure 9**.

10. Tighten all hardware and clamps, starting at the front and working rearward to secure the system. Check along the full length of the exhaust system to ensure there is adequate clearance for fuel lines, vent lines, brake lines, frame, bodywork, suspension, and any wiring, etc. If there is any interference detected, relocate, or adjust to provide adequate clearance. Ensure all clamp connections are secure and components are unable to rotate or slide. Band clamps require approximately 45 lb-ft (60 N-m) of torque. Verify clearances, system security and band clamp torque after 30-60 miles (50-100 km) of driving.

Congratulations! You are ready to begin experiencing the improved power, sound and driving experience of your **MBRP** Performance Exhaust. We know you will enjoy your purchase!