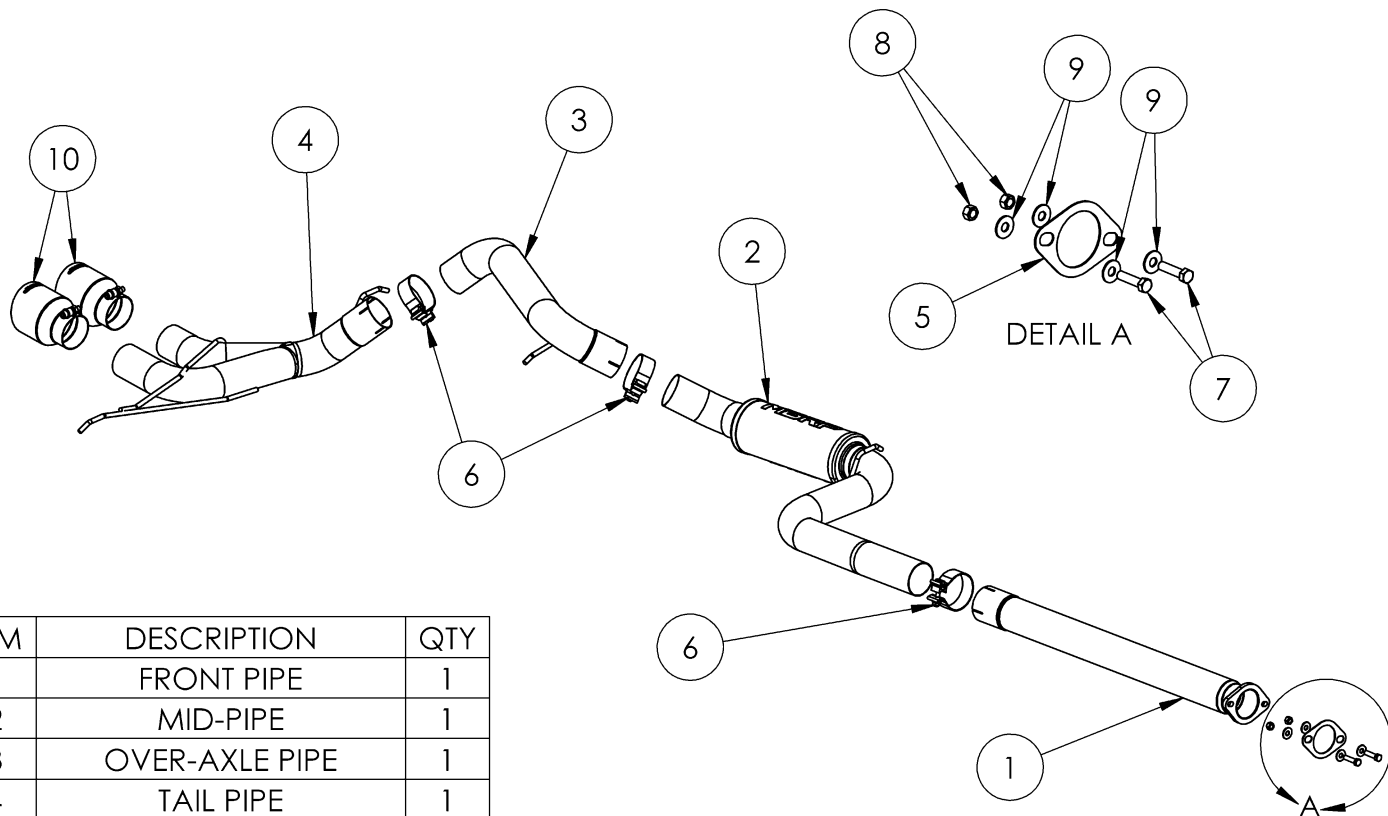


# S4201

2013-2018 FORD FOCUS ST,  
3" DUAL CENTER OUTLET, RACE PROFILE

# MBRP®



ITEM	DESCRIPTION	QTY
1	FRONT PIPE	1
2	MID-PIPE	1
3	OVER-AXLE PIPE	1
4	TAIL PIPE	1
5	GASKET	1
6	3.0" CLAMP	3
7	3/8" X 1.5" HEX BOLT	2
8	3/8" HEX NUT	2
9	3/8" FLAT WASHER	4
10	TIP	2

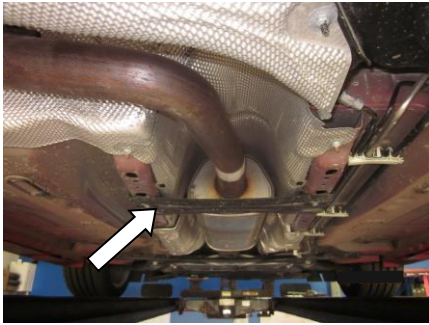
## PLEASE READ BEFORE STARTING INSTALLATION

While MBRP has made every effort to ensure that all components of this system are of superior quality and properly packaged, it is the installer's responsibility to ensure the following before removal of the factory exhaust:

- that ALL components shown above are present.
- that ALL mating components fit together.
- that there are no damaged components.
- that the system you have purchased is appropriate for your vehicle year, model and configuration.
- that the system will not interfere with any modifications previously installed or planned.
- that you have read and understand these instructions.

If you have any questions or are uncertain about any aspect of the installation of this system to your vehicle please contact your dealer before commencing installation.

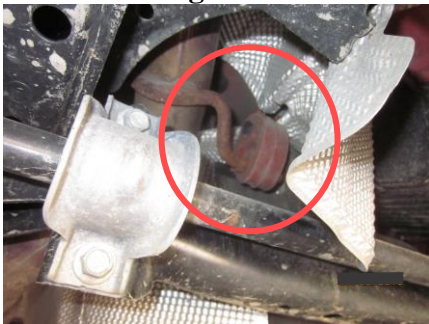
## Removal of Stock System:



**Figure 1**



**Figure 2**



**Figure 3**



**Figure 4**



**Figure 5**

1. Apply a penetrating lubricant liberally to all exhaust fasteners, hangers, and rubber insulators.

2. Remove the small cross member.

**Refer to Figure 1.**

3. Carefully cut the factory exhaust in front of the rear suspension and after the factory weld.

**Refer to Figure 2.**

4. Remove the factory muffler assembly from all three hangers and from the vehicle. There is a hanger above the rear suspension that is difficult to access.

**Refer to Figure 3.**

5. Remove the two nuts from the factory front resonator assembly.

6. Remove the last hanger from the factory isolator and remove the exhaust from the vehicle.

## Installation of MBRP Performance Exhaust:

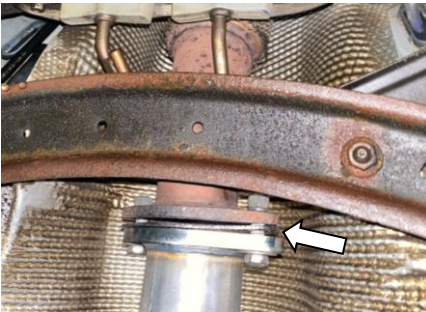
1. Insert the **Over-Axle Pipe** from the rear of the vehicle over the rear suspension cross member. It may be necessary to temporarily bend the heat shields out of the way to clear the **Over-Axle Pipe** hanger. Insert the **Over-Axle Pipe** hanger into the factory rubber isolator.

**Refer to Figures 4 and 5.**



**Figure 6**

2. Place a **3" Band Clamp** over the **Tail Pipe** inlet. Slip the **Tail Pipe** inlet onto the rear of the **Over-Axle Pipe**. Install the hangers into the factory isolators. **Do not tighten ANY clamps** until all parts are in place and aligned. **Refer to Figure 6.**



**Figure 7**

3. Install the **Extension Pipe, Gasket, and Hardware** onto the factory down pipe. The **Extension Pipe** has an angle built into it. Ensure that the pipe is angled towards the passenger side of the vehicle. **Refer to Figure 7.**



**Figure 8**

4. Install a **3" Band Clamp** over the **Extension Pipe**. **Refer to Figure 8.**



**Figure 9**

5. Install the **Mid-Pipe** into the **Front Pipe**. Place a **3" Band Clamp** on the **Over-Axle** inlet and install into the **Over-Axle Pipe**. Ensure the **3" Band Clamp** is located so it clears the heat shields and is accessible to be tightened. **Refer to Figure 9.**



**Figure 10**

6. Install the **Exhaust Tips** onto the **Tail Pipe**. Ensure that the **Tail Pipe** is level, and the **Exhaust Tips** are centred in the fascia opening. **Refer to Figure 10.**

7. Re-install the small cross member.

8. Align the exhaust as required. Pay particular attention to the location of the **Exhaust Tips**, and the **Over-Axle Pipe**.

9. Align the edge of each band clamp with the edge of the joint it is connecting. Tighten all hardware and clamps, starting at the front and working rearward to secure the system. Check along the full length of the exhaust system to ensure there is adequate clearance for fuel lines, vent lines, brake lines, frame, bodywork, suspension, and any wiring, etc. If there is any interference detected, relocate, or adjust to provide adequate clearance. Ensure all clamp connections are secure and components are unable to rotate or slide. Band clamps require approximately 45 lb-ft (60 N-m) of torque. Verify clearances, system security and band clamp torque after 30-60 miles (50-100 km) of driving.



**Congratulations!** You are ready to begin experiencing the improved power, sound and driving experience of your **MBRP** performance exhaust system. We know you will enjoy your purchase.