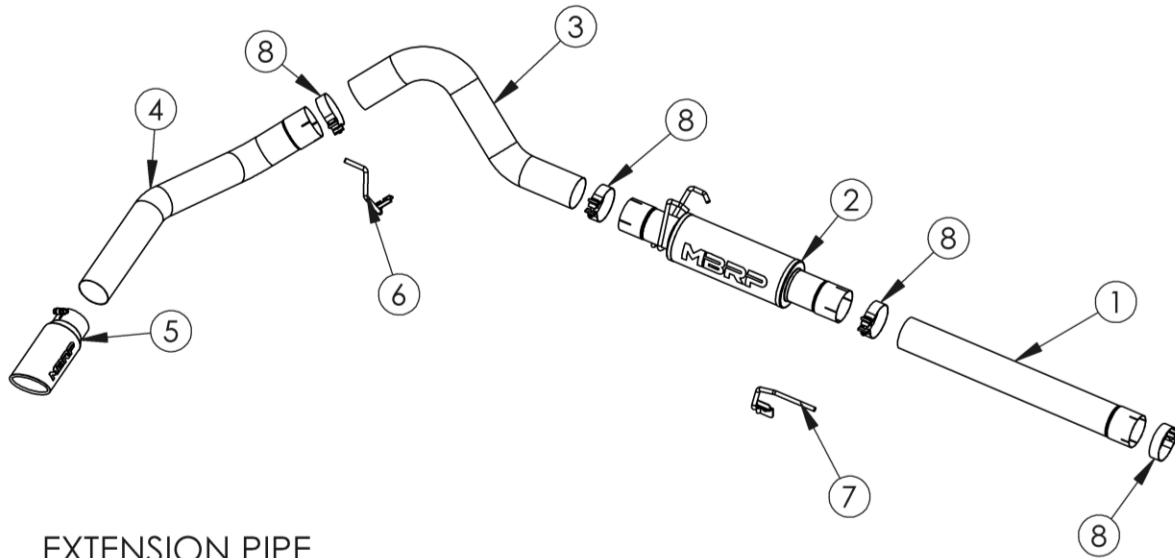


S6108

04.5-07 DODGE 2500/3500 "600/610" 5.9L
CUMMINS, CAT BACK, 4" SINGLE SIDE

MBRP®



1. EXTENSION PIPE
2. HIGH FLOW MUFFLER
3. OVER AXLE PIPE
4. TAIL PIPE
5. EXHAUST TIP
6. HANG TIGHT™ HANGER
7. HANG TIGHT™ HANGER
8. 4" BAND CLAMP (4PC)

*NOTE: MUFFLER MAY NOT BE EXACTLY AS SHOWN

PLEASE READ BEFORE STARTING INSTALATION

While MBRP Inc. has made every effort to ensure that all components of this system are of superior quality and properly packaged it is the installer's responsibility to ensure the following before removal of the factory exhaust:

- that ALL components shown above are present.
- that ALL mating components fit together.
- that there are no damaged components.
- that the system you have purchased is appropriate for your vehicle year, model and configuration.
- that the system will not interfere with any modifications previously installed or planned.
- that you have read and understand these instructions.

If you have any questions or are uncertain about any aspect of the installation of this system to your vehicle please contact your dealer before commencing installation.

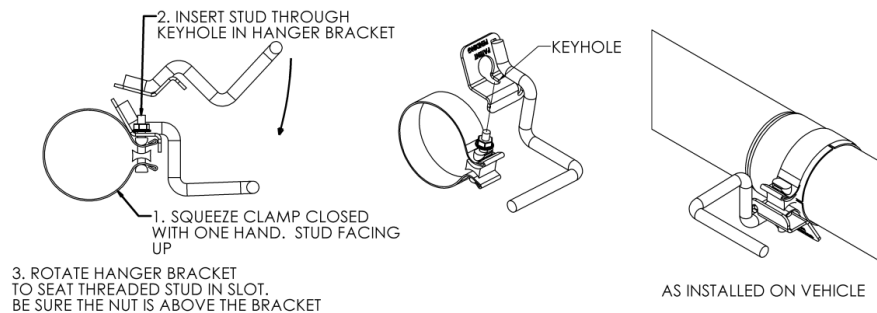
MBRP[®]

Removal of stock system

1. Apply a penetrating lubricant liberally to all exhaust fasteners, hangers and rubber insulators.
2. Remove the exhaust system from the rubber insulators and remove all of the clamps from the catalytic converter back.
3. Separate the slip joint behind the muffler and remove the tail pipe. Next, separate the slip joint located behind the catalytic converter and remove the muffler and extension pipe.

Installation of MBRP Ltd. Performance Exhaust:

1. Install the **Extension Pipe** onto the catalytic converter using a **4" Band Clamp**. The **Extension Pipe** will require cutting to accommodate vehicles other than the Quad Cab long bed or Mega Cab truck.
(**Installation tip:** Temporarily hang the muffler in place using the three OEM rubber hangers and measure from the muffler to the catalytic converter to determine the length required.)
2. Install the **Hang Tight™ Hanger** onto a **4" Band Clamp** using the procedure shown below. (Hang Tight™ Hanger not exactly as shown).



3. Install the **Muffler** onto the **Extension Pipe** using a **Hang Tight™ Hanger** clamp assembly. Install the **Hang Tight™ Hanger** into the OEM rubber insulator located on the frame near the inlet of the **Muffler**.
4. Install the **Muffler** hangers into the two OEM rubber insulators located above the outlet of the **Muffler**.
5. Install the **Hang Tight™ Hanger** onto the **4" Band Clamp** using the procedure shown above. (Hang Tight™ Hanger not exactly as shown).
6. Install **Hang Tight™ Hanger** clamp assembly onto the **Tail Pipe** and then Install the **Tail Pipe** onto the **Over Axle Pipe**. Install the assembly from the rear of the truck, over the axle and attach to the outlet of the **Muffler** using **4" Band Clamp**. Finish hanging the **Tail Pipe** by reattaching the rubber insulator.



7. Install and adjust the **Exhaust Tip** to suit. Tighten lock bolt located on the **Exhaust Tip**.

8. Align the edge of each band clamp with the edge of the joint it is connecting. Tighten all hardware and clamps, starting at the front and working rearward to secure the system. Check along the full length of the exhaust system to ensure there is adequate clearance for fuel lines, vent lines, brake lines, frame, bodywork, suspension, and any wiring, etc. If there is any interference detected, relocate, or adjust to provide adequate clearance. Ensure all clamp connections are secure and components are unable to rotate or slide. Band clamps require approximately 45 lb-ft (60 N-m) of torque. Verify clearances, system security and band clamp torque after 30-60 miles (50-100 km) of driving.

Congratulations! You are ready to begin enjoying the improved performance and driving experience of your MBRP Ltd. performance exhaust system. We hope you enjoy your purchase.