

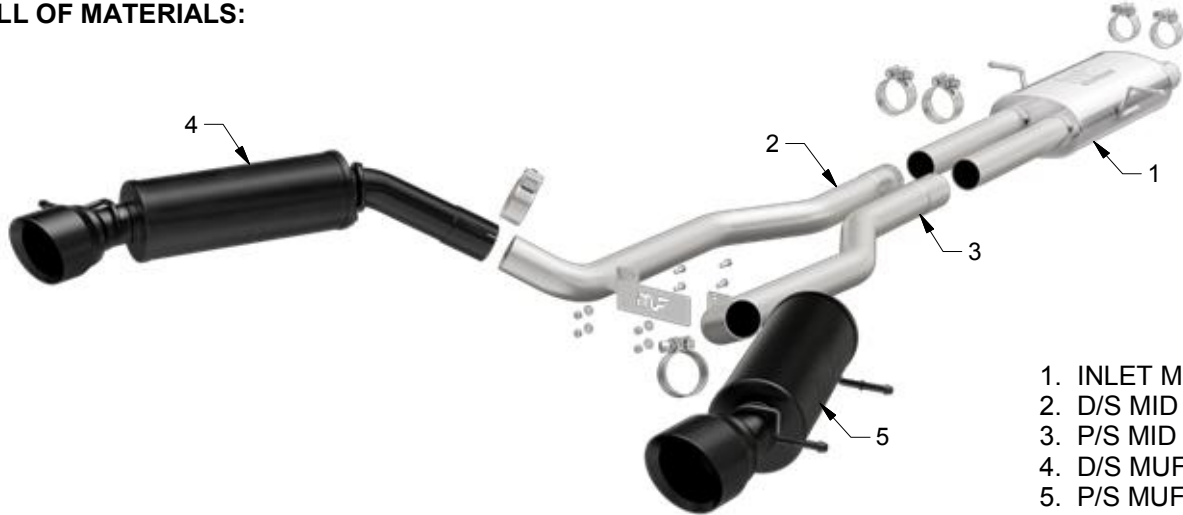


# INSTALLATION INSTRUCTIONS



2015 LAND ROVER RANGE ROVER 3.0L | PART NO. 19123

## BILL OF MATERIALS:



- 1. INLET MUFFLER ASSY.
- 2. D/S MID PIPE ASSY.
- 3. P/S MID PIPE ASSY.
- 4. D/S MUFFLER ASSY.
- 5. P/S MUFFLER ASSY.



WEAR SAFETY GLASSES



READ INSTRUCTIONS THOROUGHLY BEFORE INSTALLING PRODUCT

## SHOP SUPPLIES:



SPRAY LUBRICANT

To ease removal of existing exhaust components (especially on older vehicles) spray penetrating lubricant on all fasteners and hangers/insulators that will be loosened or removed and let soak before disassembly.

## HARDWARE KIT:

- 1. [2] 2.36" Clamp
- 2. [4] 2.50" Clamp
- 3. [4] Bolt Hex 1/4-20 x 0.75"
- 4. [4] Nut Hex Nylock 1/4-20
- 5. [4] Washer Flat 1/4"
- 6. [1] Support Bracket (MF Logo)

## MINIMUM REQUIRED TOOLS:



15mm



Hanger Tool (Or Pry Bar)

## MAGNAFLOW RECOMMENDS PROFESSIONAL INSTALLATION ON ALL THEIR PRODUCTS



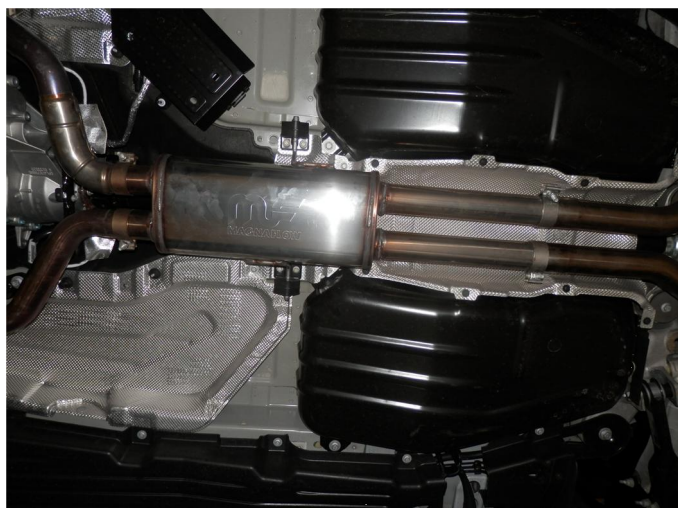
**WARNING:** When working on, under, or around any vehicle exercise caution. Please allow the vehicle's exhaust system to cool before removal, as exhaust system temperatures may cause severe burns. If working without a lift always consult vehicle manual for correct lifting specifications. Always wear safety glasses and ensure a safe work area. Serious injury or death could occur if safety measures are not followed.

**ATTENTION:** Always install any supplied band or U-bolt clamps to the proper torque specifications of 40-45 ft-lbs for band clamps and 30-35 ft-lbs for U-bolt clamps. Over tightening will result in the clamp breaking and will NOT be warranted by MagnaFlow.

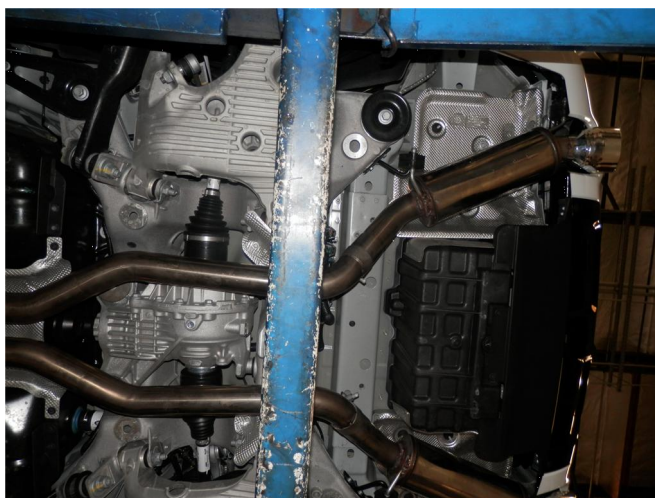
## INSTALLATION INSTRUCTIONS



**Step 1.** Begin removal of the OEM system by unclamping the OEM muffer from the catalytic converter outlet pipes. You can then disengage the welded hangers from the rubber insulators, working rearward finish removing the system. Do not damage or discard the rubber insulators as they will be re-used to mount the new system.



**Step 2.** Begin installation of your new MAGNAFLOW system by attaching the Inlet Muffer Assembly to the two catalytic converter outlet pipes. Loosely secure using the supplied 2.36" clamps. Fit the hangers into the rubber insulators. Leave all clamps loose until final adjustment.



**Step 3.** Next loosely install the two Mid Pipe Assemblies and the muffer assemblies using the supplied 2.50" clamps. Engage the welded hangers to the rubber insulators.



**Step 4** Finally install the MF logo Support Bracket to the welded brackets located on the Mid Pipe Assemblies using the supplied hardware.



**Step 5.** Once a final position has been chosen for the new exhaust system, evenly tighten all clamps from front to rear using the torque specifications on page one of the instructions. Inspect all fasteners after 25-50 miles of operation and re-tighten if necessary.