

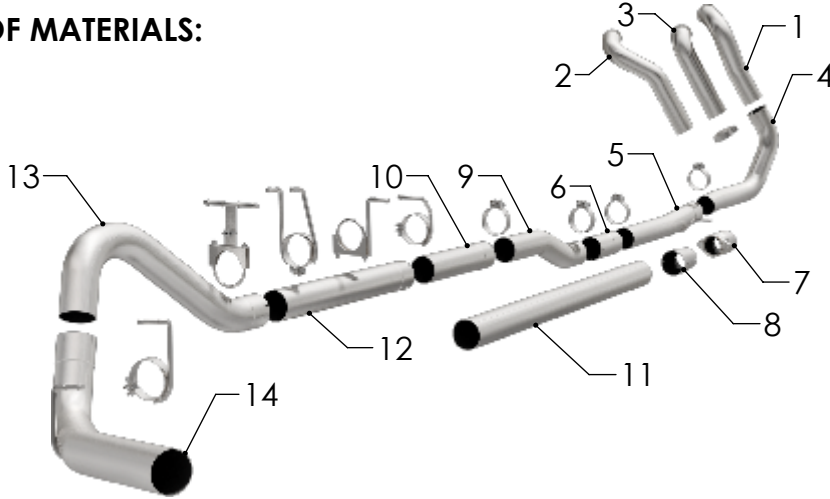


INSTALLATION INSTRUCTIONS



1999-2003 FORD F250/350 7.3L | PART NO. 18945

BILL OF MATERIALS:



1. INLET PIPE ASSY.
2. INLET PIPE ASSY.
3. INLET PIPE ASSY.
4. INLET PIPE LOWER ASSY.
5. INLET EXTN PIPE ASSY.
6. EXT PIPE 4.00x9.00".
7. PIPE/FLANGE ASSY.
8. ADAPTER 3.50/4.00x7.00".
9. EXT PIPE 2 BEND.
10. EXT PIPE ASSY 18.00".
11. EXT PIPE 4.00x54.50".
12. EXT PIPE 4.00x30.00".
13. OVER AXLE PIPE .
14. TAIL PIPE ASSY.

SHOP SUPPLIES:



WEAR SAFETY GLASSES



READ INSTRUCTIONS THOROUGHLY BEFORE INSTALLING PRODUCT



SPRAY LUBRICANT

To ease removal of existing exhaust components (especially on older vehicles) spray penetrating lubricant on all fasteners and hangers/insulators that will be loosened or removed and let soak before disassembly.

HARDWARE KIT:

1. [1] 3.50" Clamp.
2. [5] 4.00" Clamp.
3. [1] Hanger Clamp Assy #1.
4. [1] Hanger Clamp Assy #2.
5. [1] Hanger Clamp Assy#3.
6. [1] Hanger Clamp 4.00" A.
7. [1] Hanger Clamp 4.00" B.
8. [1] Adj T Clamp, Bottom.
9. [1] Adj T Clamp, Top.
10. [2] U-Bolt, 4.00".
11. [4] Hex Nut 3/8.
12. [2] Hex Nut 5/16.
13. [2]Hex Bolt 5/16 .
14. [4]Washer 5/16.

MINIMUM REQUIRED TOOLS:



Sawzall/Cutting tool



13,15 mm



Hanger Tool (Or Pry Bar)

MAGNAFLOW RECOMMENDS PROFESSIONAL INSTALLATION ON ALL THEIR PRODUCTS

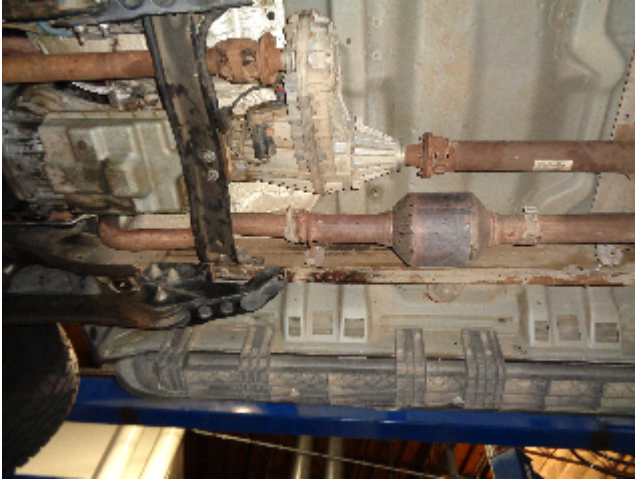


WARNING: When working on, under, or around any vehicle exercise caution. Please allow the vehicle's exhaust system to cool before removal, as exhaust system temperatures may cause severe burns. If working without a lift always consult vehicle manual for correct lifting specifications. Always wear safety glasses and ensure a safe work area. Serious injury or death could occur if safety measures are not followed.

ATTENTION: Always install any supplied band or U-bolt clamps to the proper torque specifications of 40-45 ft-lb for band clamps and 30-35 ft-lb for U-bolt clamps. Over tightening will result in the clamps breaking and will NOT be warranted by MagnaFlow.

MAGNAFLOW: 1901 Corporate Centre Dr - Oceanside, CA 92056 | 1(800)990-0905
Technical Support: 1(800) 959-9226 | Email: moreinfo@magnaflow.com

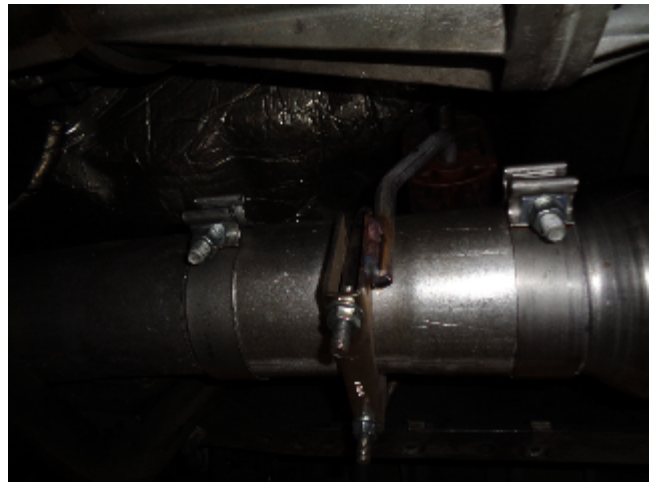
INSTALLATION INSTRUCTIONS



Step 1. Working front to rear loosen or remove all OEM band clamps and disengage all welded hangers from the rubber insulators. Be sure to retain all mounting hardware as it will be needed to install your new MAGNAFLOW system.



Step 2. Install corresponding Inlet Pipe Assembly. Select one and loosely fasten it to the turbo charger outlet using the OEM clamp. Next, loosely attach the Inlet Pipe Lower Assembly to the Inlet Pipe Assembly using the supplied clamp. Refer to the table to select the appropriate extension pipes for your vehicles configuration.



Step 3. As you assemble the Extension Pipes loosely locate the Hanger Clamp Assemblies as needed.

TABLE		
CAB/BED	18.0" EXT	30.0" EXT
CC/LB	YES	YES
CC/SB	YES	YES
EC/LB	NO	YES
EC/SB	YES	NO

MAGNAFLOW: 1901 Corporate Centre Dr - Oceanside, CA 92056 | 1(800)990-0905
Technical Support: 1(800) 959-9226 | Email: moreinfo@magnaflow.com

INSTALLATION INSTRUCTIONS



Step 4. Loosely install the Over Axle Pipe Assembly using the supplied Hanger Clamp that applies to your application. locate both welded hangers to the rubber insulators.



Step 5. Install the Tail Pipe Assembly in the same way. The Outlet may be trimmed as desired.



Step 6. Once a final position has been chosen for the new exhaust system, evenly tighten all clamps from front to rear using the torque specifications on page one of the instructions. Inspect all fasteners after 25-50 miles of operation and re-tighten if necessary.