

2006— FORD CROWN VICTORIA 4.6L V8

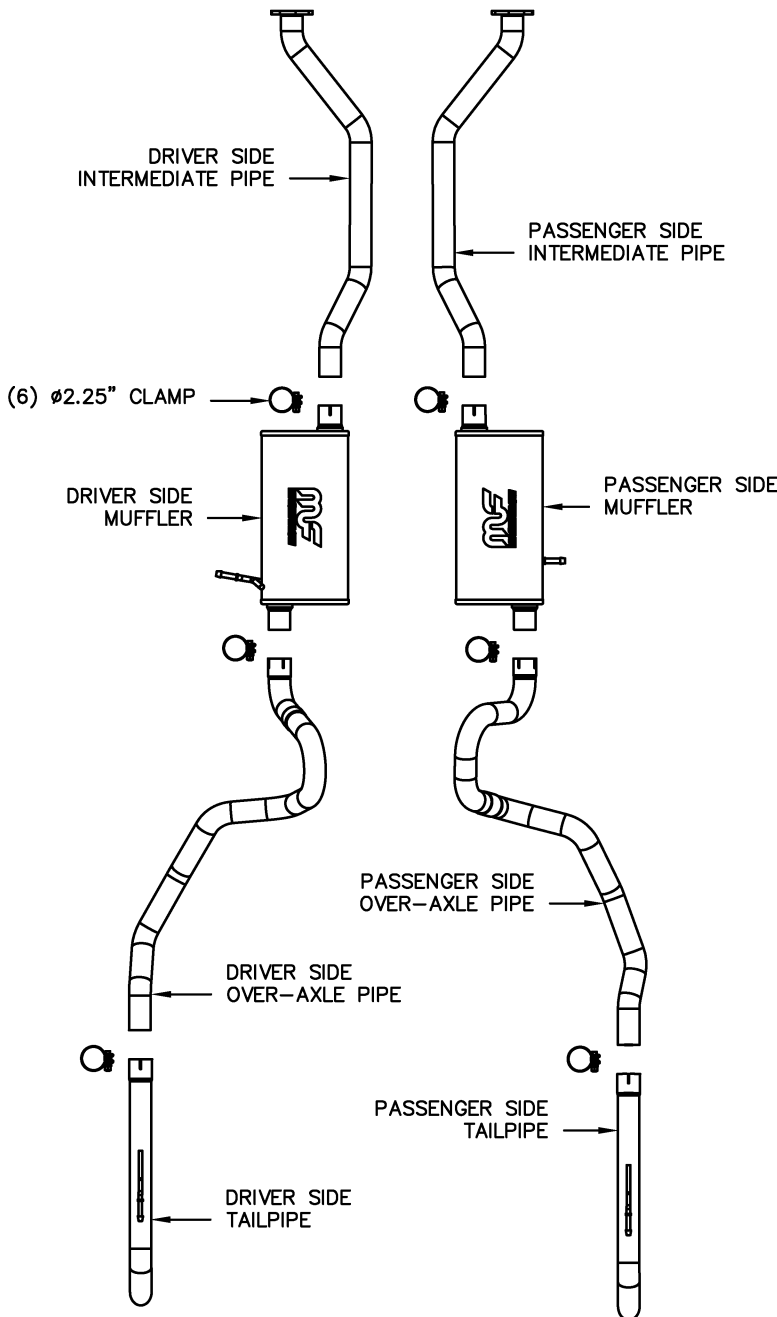
Warning: When working on, under, or around any vehicle exercise caution. Please allow the vehicle's exhaust system to cool before removal, as exhaust system temperatures may cause severe burns. If working without a lift, always consult vehicle manual for correct lifting specifications. Always wear safety glasses and ensure a safe work area. Serious injury or death could occur if safety measures are not followed.

Step 1: (Carefully read all instructions before installation) Disconnect the vehicle's battery before removal of the OEM exhaust. This will allow the computer to reset itself with the new system, and prevent electrical accidents. To remove the OEM exhaust system you will need to cut the OEM over-axle pipe just in front of the rear axle. Unbolt all hangers from the tailpipes and mufflers. Do not damage or discard the OEM rubber insulators or fasteners as they will be re-used to mount the new system. Unbolt the flanges where the OEM intermediate pipes meet the catalytic converter extensions and remove the pipes from the vehicle.

Step 2: Layout all parts of the new system as shown in the diagram. Install the new intermediate pipes using the OEM fasteners. Leave all clamps and fasteners loose for final adjustment of the complete system. Working rearward, install the mufflers by fitting the welded hangers into the rubber insulators, and by using the supplied clamps. Install the over-axle pipes and tailpipes in a similar fashion.

Step 3: With all components mounted loosely, adjust the system for overall aesthetics and clearance of frame & bodywork. (MAGNAFLOW recommends at least 1/2" of clearance between the exhaust system and any body panels to prevent heat-related body damage or fire.)

Step 4: Once a final position has been chosen for the new system, evenly tighten all fasteners from front to rear. The supplied band clamps must be VERY tight to properly align the pipes and prevent leaks (Approximately 40ft-lbs). Inspect all fasteners after 25-50 miles of operation and retighten if necessary.



*MAGNAFLOW Performance Exhaust recommends professional installation on all their products

Technical support: 1-800-959-9226 ext. 4500
MAGNAFLOW Performance Exhaust — 22961 Arroyo Vista — Rancho Santa
Margarita, CA 92688