



BX1746

2015-2022 Chevy Colorado (4WD)
2017-2022 Chevy Colorado ZR2 (No Bison)
2015-2020 GMC Canyon (4WD) (Includes Denali)
2021-2022 GMC Canyon (Includes AT4 & Shuttles)
Installation Instructions

Please read **BOTH** these Installation Instructions and the General Information sheet prior to installing or operating this equipment.

Serial Number

Attachment Tab Height: 13.5"-17"

Attachment Tab Width: 30.5"



If the front of your vehicle looks different than these, please contact us at (402)385-3051.

BX1746

2015-2022 Chevy Colorado (4WD) & 2017-2022 Chevy Colorado ZR2
2015-2020 GMC Canyon (4WD) (Includes Denali)
2021-2022 GMC Canyon (Includes AT4 & Shuttles)
Installation Instructions

Reference your vehicle owner's manual for manufacturer's towing specifications.

1. Blue Ox® towing products and accessories are intended to be installed by Blue Ox® Dealers who are familiar with our products and have the equipment and knowledge necessary to do "fit work". If needed, Blue Ox® Dealers can be found at www.blueox.com or by contacting our Technical Service Department at (402) 385-3051.
2. Many Blue Ox® baseplates are designed to use existing holes and hardware to mount the baseplate to the towed vehicle. Even though bolts are there, do not assume they are adequate for baseplate mounting. Always use the hardware supplied in the hardware kit and existing hardware as specified in the installation instructions.



Bolt Torque Specifications

Torque in Foot-Pounds for Inch Bolts

| Bolt Size | Grade 5 | Grade 8 |
|-----------|---------|---------|
| 1/4" | 10 | 14 |
| 5/16" | 19 | 29 |
| 3/8" | 33 | 47 |
| 7/16" | 54 | 78 |
| 1/2" | 78 | 119 |
| 5/8" | 154 | 230 |
| 3/4" | 257 | 380 |

Bolt Torque Specifications

Torque in Foot-Pounds for Metric Bolts

| Bolt Size | Grade 8.8 | Grade 10.9 |
|-----------|-----------|------------|
| 6MM | 6 | 8 |
| 8MM | 16 | 22 |
| 10MM | 31 | 40 |
| 12MM | 54 | 70 |
| 14MM | 89 | 117 |
| 16MM | 161 | 230 |
| 18MM | 222 | 318 |

BX1746

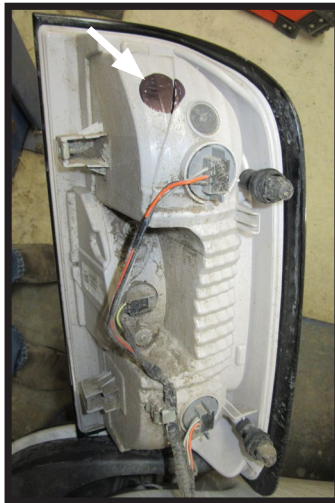
2015-2022 Chevy Colorado (4WD) & 2017-2022 Chevy Colorado ZR2 2015-2020 GMC Canyon (4WD) (Includes Denali) 2021-2022 GMC Canyon (Includes AT4 & Shuttles) Installation Instructions

Instruction Notes: The fascia cover, fascia, skid plate, air baffle and bumper are removed and reinstalled for the baseplate installation. Some drilling and trimming is required.

Place all components that are removed on a flat, sturdy surface. All items will be reinstalled unless otherwise noted after the baseplate is installed.

The dimensional variations between otherwise identical vehicles can be considerable. While the baseplate was designed for easy installation, it may be necessary to tailor the baseplate slightly to compensate for vehicle manufacturer's tolerances.

The BX8869 Tail Light Wiring Kit is recommended for this vehicle.



Drill a hole according to the tail light wiring kit instructions.

NOTICE

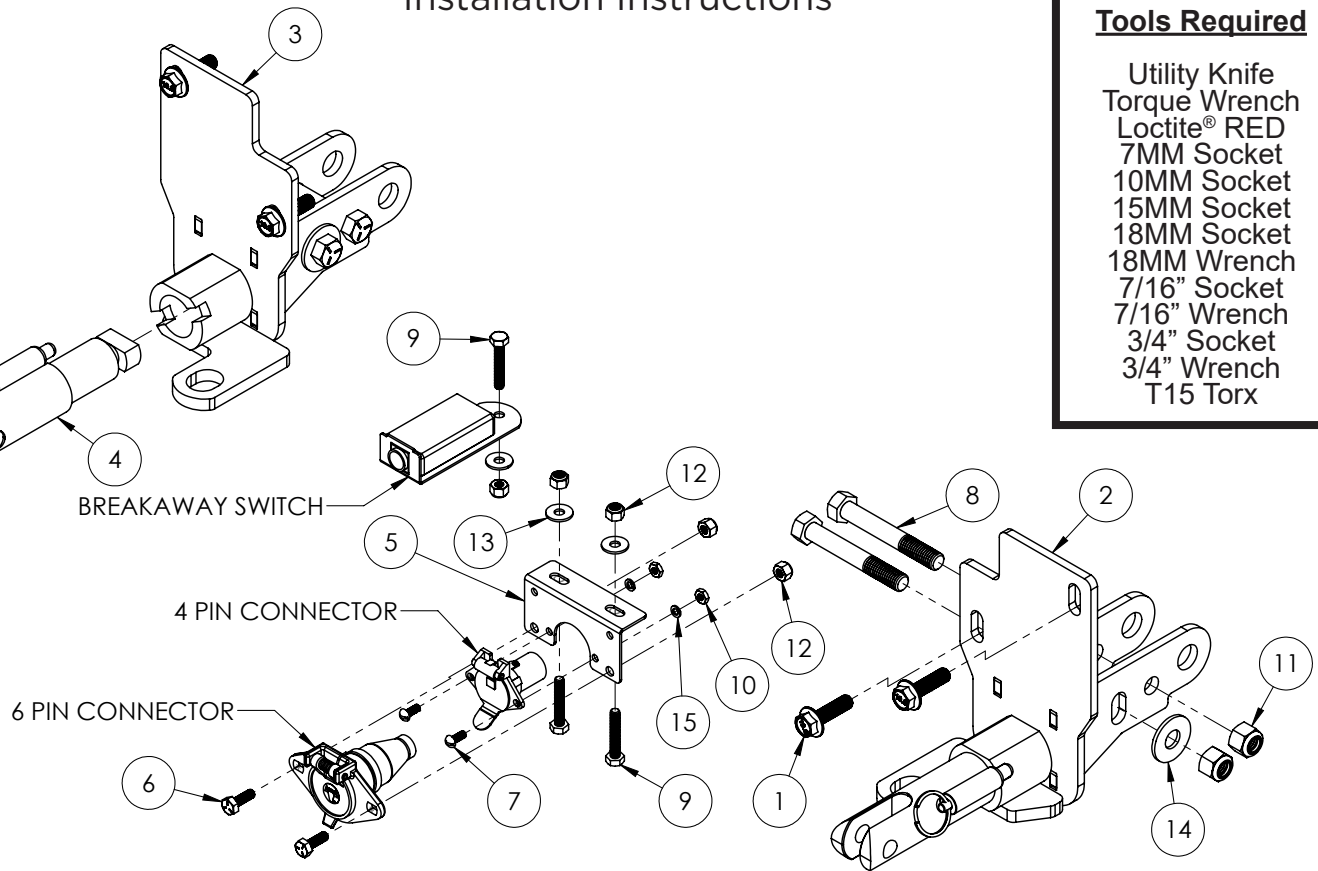
- Handling of some cosmetic parts when installing this product may require the use of protective covers, rags, specialty tools, etc. to prevent damage.
- When using power drills be aware of the dangers of torque and drill bit length.
- When using a reciprocating saw be aware of objects behind the cutting surface.
- Use a good quality paint to spray cut edges of frame to prevent rusting.
- Be sure that **ALL** electrical connections are plugged in and accessories are functioning properly before reinstalling the fascia.
- The baseplate is computer tested to your vehicle's GVWR, exceeding this weight will void the manufacturer's warranty.
- Be sure to use a sufficient amount of Loctite® Red on all bolt threads before tightening. Tighten all bolts according to the torque chart provided unless specified.
- Dealer or installer be certain the user receives these instruction sheets.
- If the baseplate is in an accident, it must be replaced. **DO NOT** use it again! An accident can cause unseen damage and using it again could result in more damage or serious injury. **DO NOT** use the baseplate if it is damaged or missing parts.

BX1746

2015-2022 Chevy Colorado (4WD) & 2017-2022 Chevy Colorado ZR2
 2015-2020 GMC Canyon (4WD) (Includes Denali)
 2021-2022 GMC Canyon (Includes AT4 & Shuttles)
 Installation Instructions

Tools Required

Utility Knife
 Torque Wrench
 Loctite® RED
 7MM Socket
 10MM Socket
 15MM Socket
 18MM Socket
 18MM Wrench
 7/16" Socket
 7/16" Wrench
 3/4" Socket
 3/4" Wrench
 T15 Torx



| Item No. | Part No. | Description | Qty. |
|----------|---------------------------|---|------|
| 1..... | Existing..... | 10MM x 35MM Long Flanged Bolt | 4 |
| 2..... | 61-8460 | BX1746 Baseplate, DS..... | 1 |
| 3..... | 61-8461 | BX1746 Baseplate, PS..... | 1 |
| 4..... | 62-3468 | Attachment Tab Assembly with Hole | 2 |
| 5..... | 101-6135 | Electrical Bracket, 90° Bend..... | 1 |
| 6..... | 201-0050 | 1/4\"-20 x 3/4\" Hex Head Bolt, Grade 5, ZP | 2 |
| 7..... | 201-0192 | #10-32 1/2\" Round Slotted Head Screw..... | 2 |
| 8..... | 201-0369 | 1/2\"-13 x 3-1/2\" Hex Head Bolt, Grade 5, ZP | 4 |
| 9..... | 201-0448 | 1/4\"-20 x 1-1/2\" Hex Head Bolt, Grade 5, ZP | 3 |
| 10..... | 202-0047 | #10-32 Hex Nut | 2 |
| 11..... | 202-0094 | 1/2\"-13 Hex Nylon Insert Lock Nut, ZP..... | 4 |
| 12..... | 202-0102 | 1/4\"-20 Hex Nylon Nut, ZP | 5 |
| 13..... | 203-0001 | 1/4\" Flat Washer, ZP..... | 3 |
| 14..... | 203-0005 | 1/2\" Flat Washer, ZP..... | 4 |
| 15..... | 203-0054 | #10 Lock Washer, ZP | 2 |
| 16..... | 226-0049(not shown) | Class IV Safety Cables..... | 2 |
| 17..... | 229-0512(not shown) | 1/2\" Quicklink, ZP | 2 |
| 18..... | 290-0437(not shown) | Black Cap Plug Receiver..... | 2 |

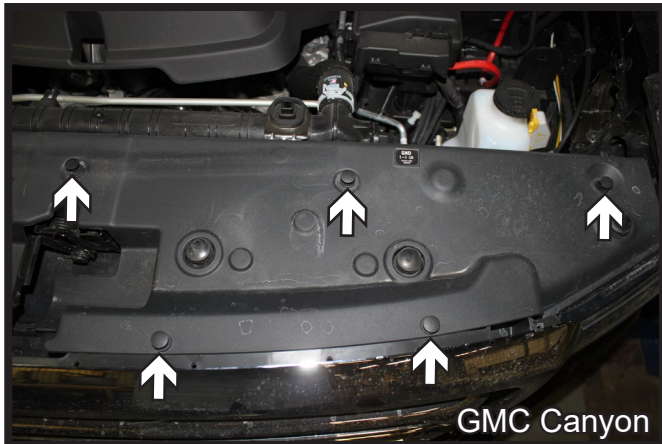
Important:

Use only genuine factory replacement parts on your baseplate. Do **NOT** substitute homemade or non-typical parts. If a bolt is lost or in need of replacement, for your safety and the preservation of your baseplate, be sure to use a replacement bolt of the same grade (In most cases it will be Grade 5, please reference the parts list above). Replacement parts may be ordered through your nearest Blue Ox® Dealer or Distributor. Failing to follow and/or altering these installation instructions in either installation or required equipment will void the manufacturer's warranty. Towing behind a non-motorized vehicle will void the warranty.

BX1746

2015-2022 Chevy Colorado (4WD) & 2017-2022 Chevy Colorado ZR2
2015-2020 GMC Canyon (4WD) (Includes Denali)
2021-2022 GMC Canyon (Includes AT4 & Shuttles)
Installation Instructions

2015-22 Chevy Colorado / 2015-20 GMC Canyon Fascia Removal:



1. **Canyon Only:** Remove the nine (9) push pins, four (4) on each side and one (1) in the center, from the fascia cover. Set aside cover to be reinstalled later.
All Models: Using a T15 Torx, remove the six (6) screws from the top edge of the fascia.

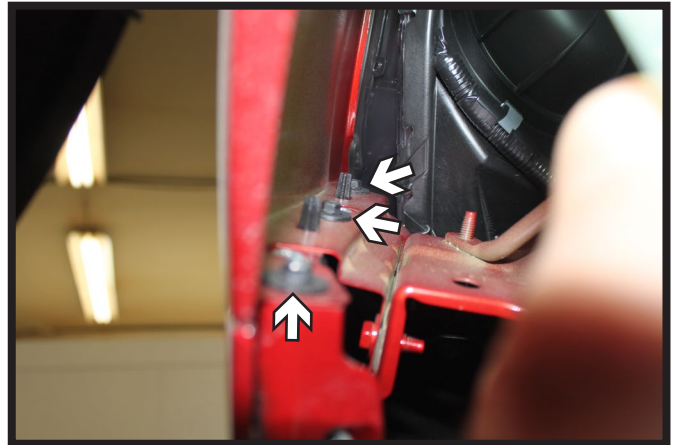


2. Using a T15 Torx, remove the four (4) screws from the edge of the fender flare. Do this on both sides of the vehicle.

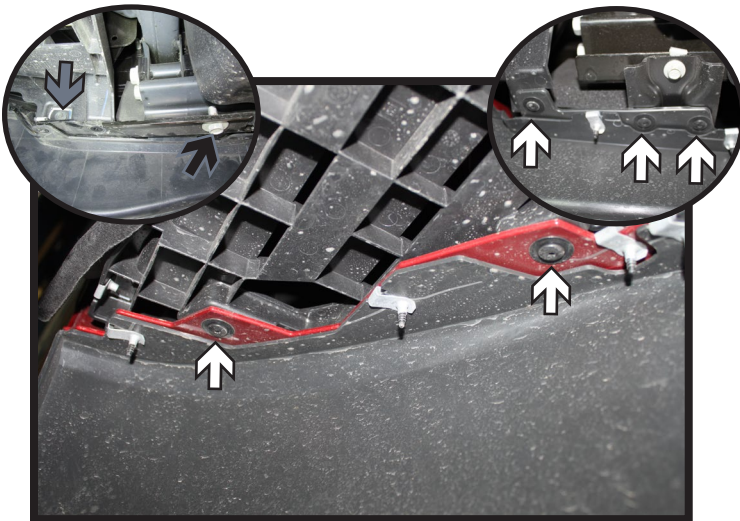
2015-2022 Chevy Colorado (4WD) & 2017-2022 Chevy Colorado ZR2
 2015-2020 GMC Canyon (4WD) (Includes Denali)
 2021-2022 GMC Canyon (Includes AT4 & Shuttles)
 Installation Instructions



3. Pull out the fender flare and remove the screw behind, using a T15 Torx. Do this on both sides of the vehicle.



4. Behind the wheel well liner, using a 7MM socket, remove the three (3) screws along the fascia/fender joint. Do this on both sides of the vehicle.



5. **All Models:** Using a T15 Torx, remove the ten (10) screws from the underside edge of the fascia. There are five (5) on each side (white).

2021-22 Chevy Colorado Models: (Left Inset) Using a 7MM socket, also remove the two (2) screws (gray) from underside edge of the fascia. There is one (1) on each side. And using a 15MM socket, remove the two (2) screws (black). There is one (1) on each side also.



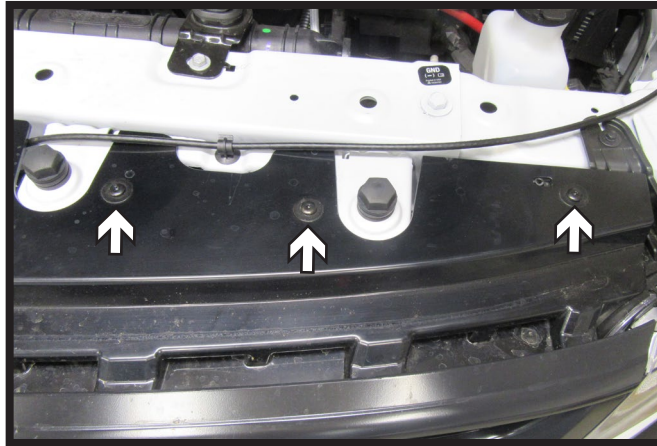
6. Using a 10MM socket, remove the two (2) screws from inside the grille just above the license plate bracket. There is one (1) on each side.

Continue to page 14 for bumper removal and baseplate installation

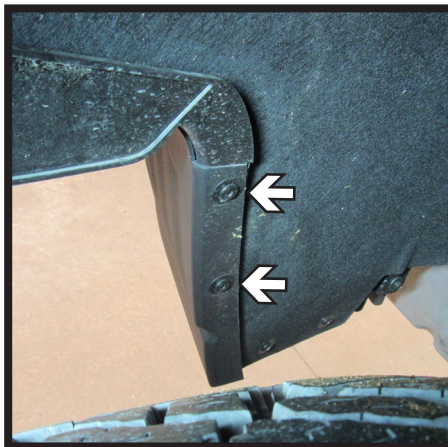
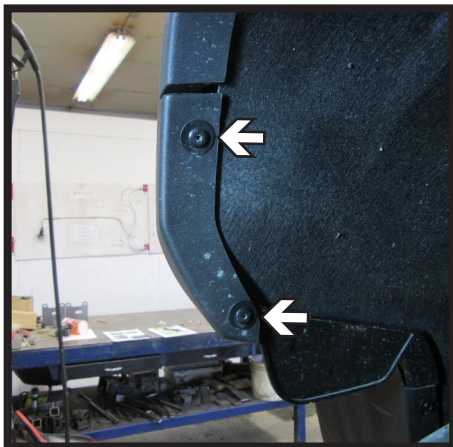
BX1746

2015-2022 Chevy Colorado (4WD) & 2017-2022 Chevy Colorado ZR2
2015-2020 GMC Canyon (4WD) (Includes Denali)
2021-2022 GMC Canyon (Includes AT4 & Shuttles)
Installation Instructions

2017-20 Chevy Colorado ZR2 Fascia and Bumper Removal:



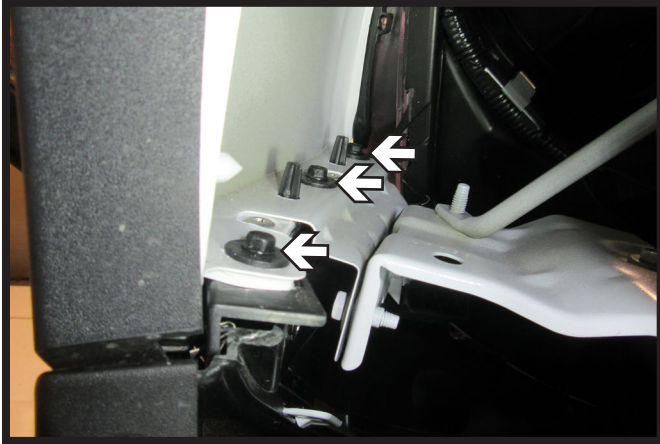
1. Using a T15 Torx, remove the six (6) screws, three (3) on each side, from the top edge of the fascia.



2. Using a T15 Torx, remove the five (5) screws from in front of the tire in the wheel well. Do this on both sides of the vehicle.

BX1746

2015-2022 Chevy Colorado (4WD) & 2017-2022 Chevy Colorado ZR2
2015-2020 GMC Canyon (4WD) (Includes Denali)
2021-2022 GMC Canyon (Includes AT4 & Shuttles)
Installation Instructions

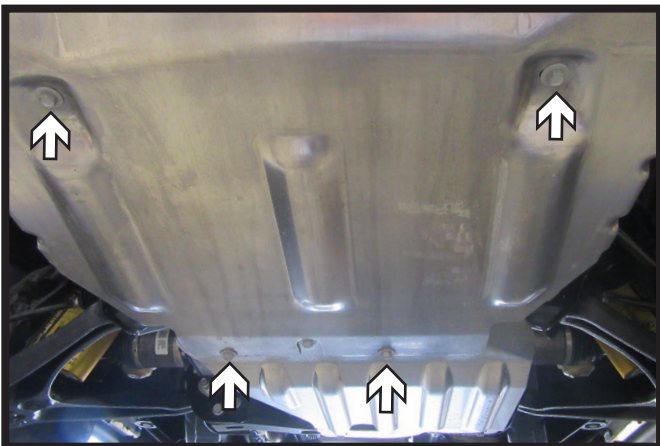


3. Behind the wheel well liner, using a 7MM socket, remove the three (3) screws along the fascia/fender joint. Do this on both sides of the vehicle.

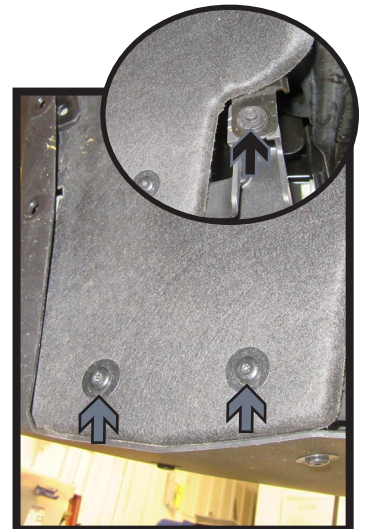
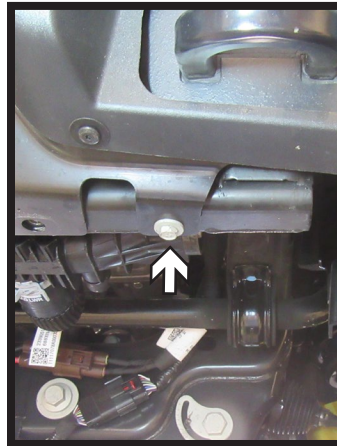


4. Using a 10MM socket, remove the two (2) screws (white) from the grill just above the license plate bracket.

Then using a 10MM socket, remove the one (1) screw (gray) from inside the grill shown in inset. Do this on both sides of the vehicle.



5. Using a 15MM socket, remove the four (4) screws from the belly pan. Remove belly pan and set aside to be reinstalled later.



6. Using a 10MM socket, remove the one (1) screw (white) from under the tow hook. Then using a T15 Torx remove the two (2) indicated screws (gray). Using a 7MM socket remove the one (1) screw as indicated in the inset (black). Do this on both sides of the vehicle.

BX1746

2015-2022 Chevy Colorado (4WD) & 2017-2022 Chevy Colorado ZR2
2015-2020 GMC Canyon (4WD) (Includes Denali)
2021-2022 GMC Canyon (Includes AT4 & Shuttles)
Installation Instructions



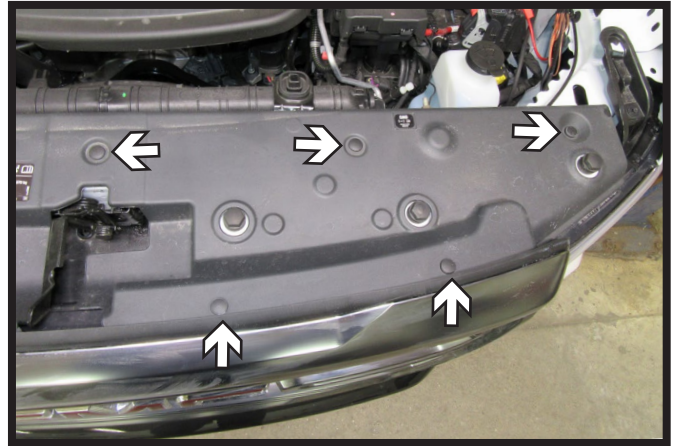
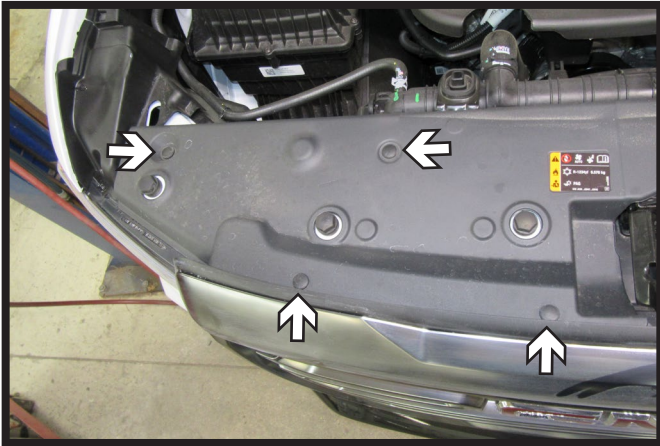
7. Using a flat blade screwdriver unsnap the two (2) clips open on the back side of the fascia. Do this on both sides of the vehicle. Remove fascia and set aside to be reinstalled later.

Continue to page 14 for bumper removal and baseplate installation

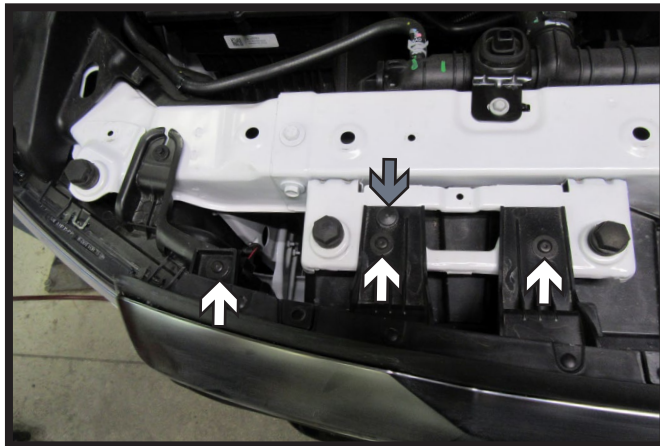
BX1746

2015-2022 Chevy Colorado (4WD) & 2017-2022 Chevy Colorado ZR2
2015-2020 GMC Canyon (4WD) (Includes Denali)
2021-2022 GMC Canyon (Includes AT4 & Shuttles)
Installation Instructions

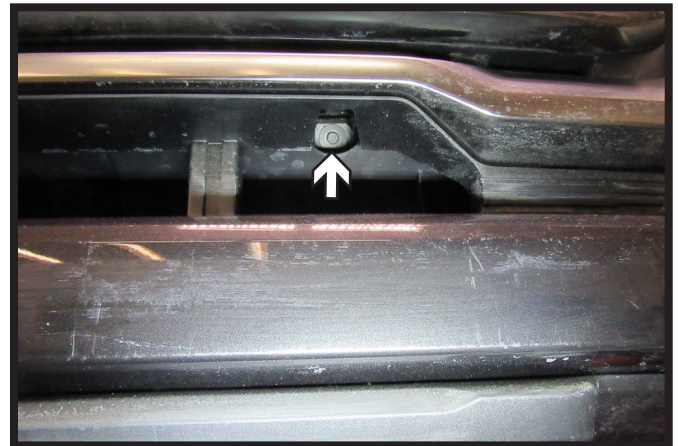
2021-22 GMC Canyon Fascia Removal:



1. Remove the nine (9) push pins from the fascia cover. Remove fascia cover and set aside to be reinstalled later.



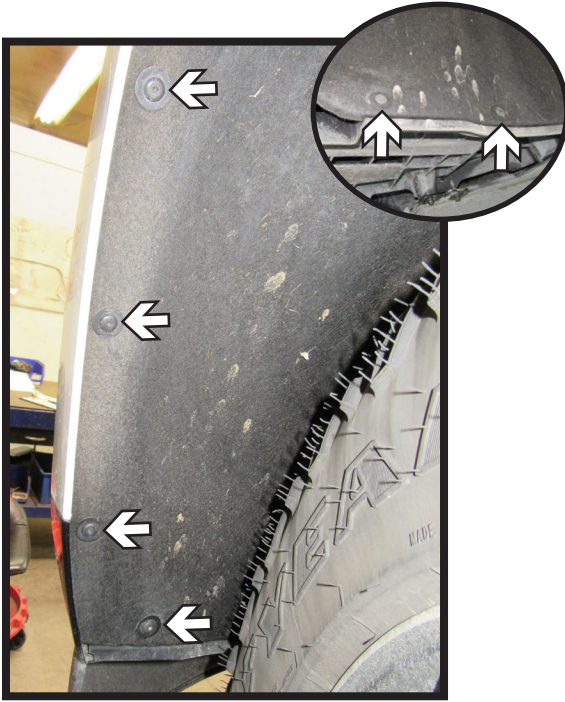
2. Using a T15 Torx, remove the six (6) bolts (white) and two (2) push pins (gray) from the top edge of the fascia. There are three (3) bolts and one (1) push pin on each side.



3. Using a 10MM socket, remove the two (2) bolts from the grille. There is one (1) bolt on each side of the vehicle.

BX1746

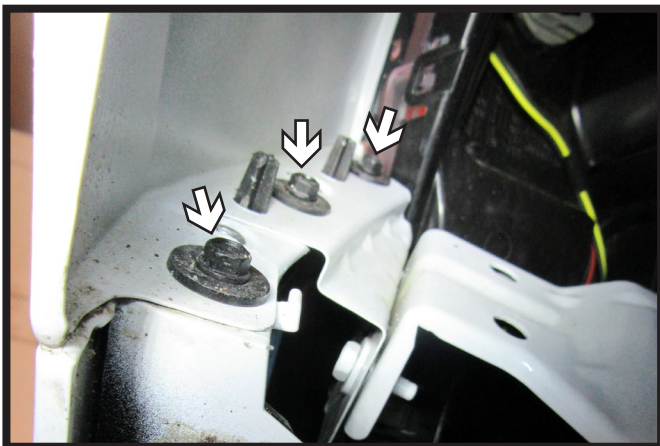
2015-2022 Chevy Colorado (4WD) & 2017-2022 Chevy Colorado ZR2
2015-2020 GMC Canyon (4WD) (Includes Denali)
2021-2022 GMC Canyon (Includes AT4 & Shuttles)
Installation Instructions



4. Using a T15 Torx, remove the six (6) bolts from along the edge of the wheel well. Do this on both sides of the vehicle.



5. Using a 7MM socket, remove the one (1) bolt in front of the tire. Do this on both sides of the vehicle.



6. Pull back the wheel well liner and using a 7MM socket, remove the three (3) bolts from the fascia joint. Do this on both sides of the vehicle.

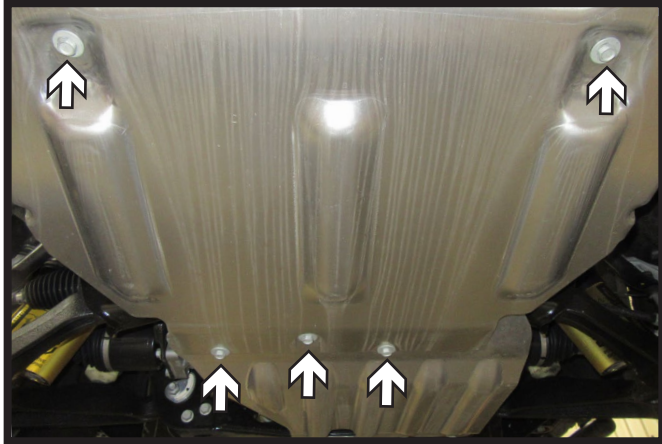


7. Using a 15MM socket, remove the one (1) bolt from the underside of the fascia. Do this on both sides of the vehicle. Remove fascia and set aside to be reinstalled later.

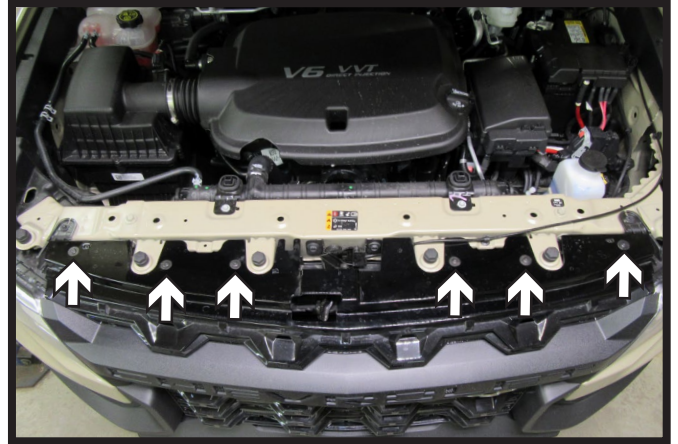
Continue to page 14 for bumper removal and baseplate installation

2015-2022 Chevy Colorado (4WD) & 2017-2022 Chevy Colorado ZR2
 2015-2020 GMC Canyon (4WD) (Includes Denali)
 2021-2022 GMC Canyon (Includes AT4 & Shuttles)
 Installation Instructions

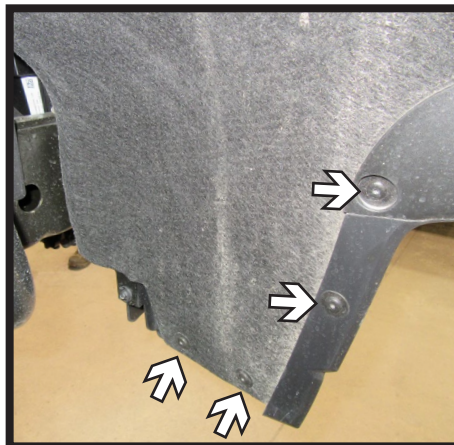
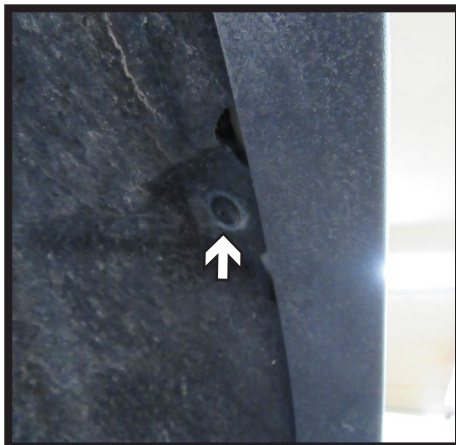
2021 Chevy Colorado Fascia Removal:



1. Using a 15MM socket, remove the five (5) bolts from the skid plate. There are two (2) bolts towards the front and three (3) towards the back. Remove skid plate and set aside to be reinstalled later.



2. Using a T15 Torx, remove the six (6) bolts from the top edge of the fascia.



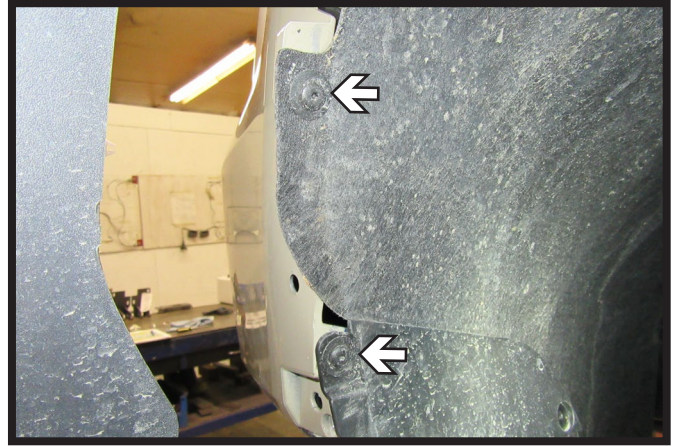
3. Using a T15 Torx, remove the six (6) bolts from along the edge of the wheel well and under the vehicle. Do this on both sides of the vehicle.

BX1746

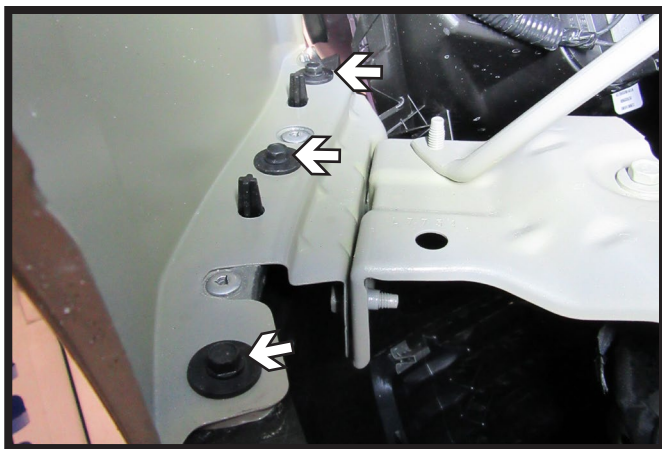
2015-2022 Chevy Colorado (4WD) & 2017-2022 Chevy Colorado ZR2
2015-2020 GMC Canyon (4WD) (Includes Denali)
2021-2022 GMC Canyon (Includes AT4 & Shuttles)
Installation Instructions



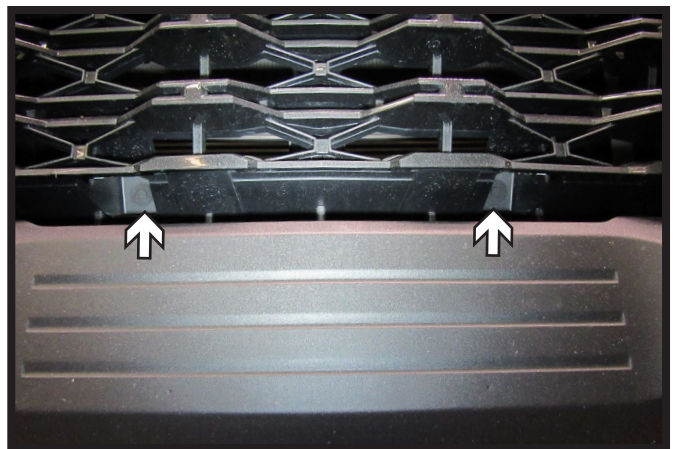
4. Unclip the wheel well trim and prop away from the vehicle using a soft cloth. Do this on both sides of the vehicle.



5. Using a T15 Torx, remove two (2) bolts from the wheel well liner. Do this on both sides of the vehicle.



6. Pull back the wheel well liner and using a 7MM socket, remove the three (3) bolts from the fascia joint. Do this on both sides of the vehicle.



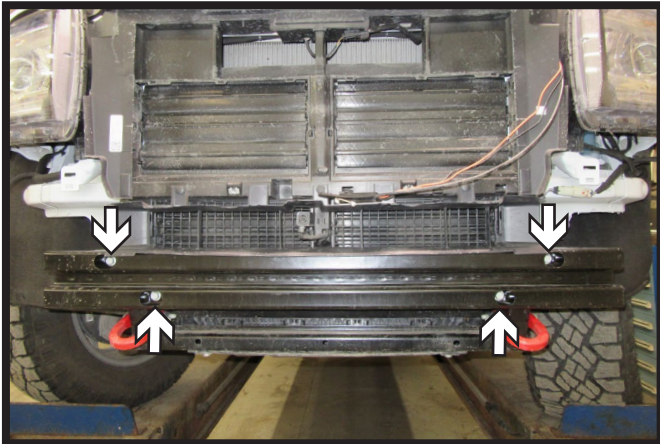
7. Using a 10MM socket, remove the two (2) bolts from the grille.

Continue to page 14 for bumper removal and baseplate installation

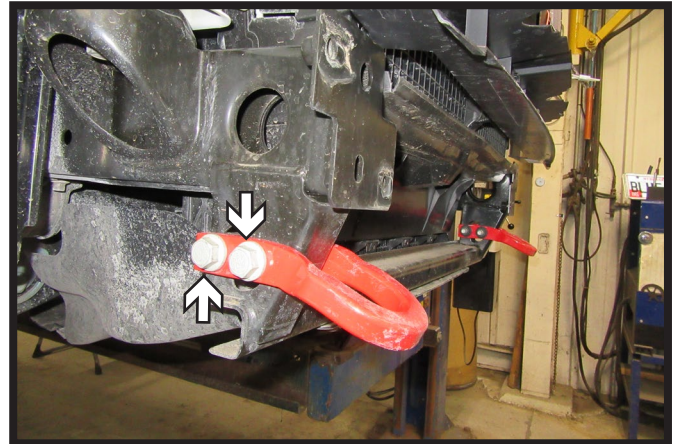
BX1746

2015-2022 Chevy Colorado (4WD) & 2017-2022 Chevy Colorado ZR2
2015-2020 GMC Canyon (4WD) (Includes Denali)
2021-2022 GMC Canyon (Includes AT4 & Shuttles)
Installation Instructions

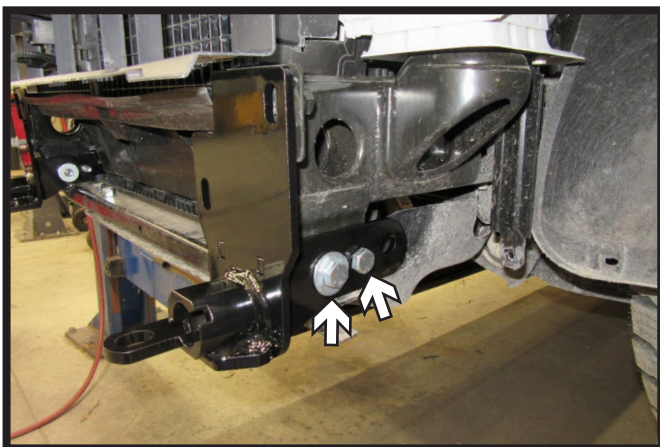
Bumper Removal & Baseplate Installation:



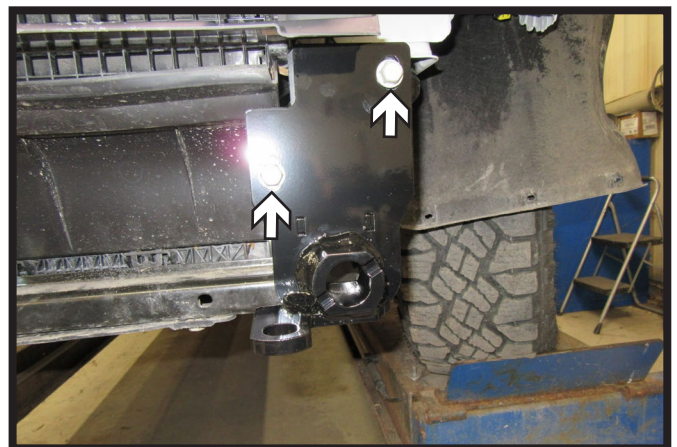
1. Using a 15MM socket, remove the four (4) bolts from the bumper. There are two (2) bolts on each side of the vehicle. Remove bumper and set aside to be reinstalled later.



2. Using an 18MM socket and wrench, remove the two (2) bolts from the tow hook. Do this on both sides of the vehicle. Remove the tow hooks and set aside. They will not be reinstalled later.



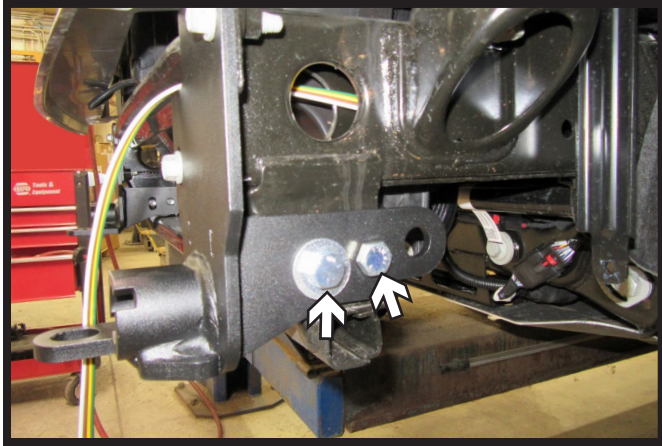
3. Slide baseplate into place and insert two (2) 1/2" x 3-1/2" bolts into the side holes. Use a flat washer with front bolt. Do not install nuts at this time. Do this on both sides of the vehicle.



4. Start the two (2) existing 10MM bolts into the front holes. May need to lift baseplate for holes to line up. Tighten bolts but do not use Loctite Red at this time. Do this on both sides of the vehicle.

BX1746

2015-2022 Chevy Colorado (4WD) & 2017-2022 Chevy Colorado ZR2
2015-2020 GMC Canyon (4WD) (Includes Denali)
2021-2022 GMC Canyon (Includes AT4 & Shuttles)
Installation Instructions



5. Remove the two (2) side bolts, add Loctite Red, and reinstall. Tighten fully at this time. Do this on both sides of the vehicle.

**** Use Loctite® Red on all bolt threads and tighten all bolts to the appropriate torque. ****

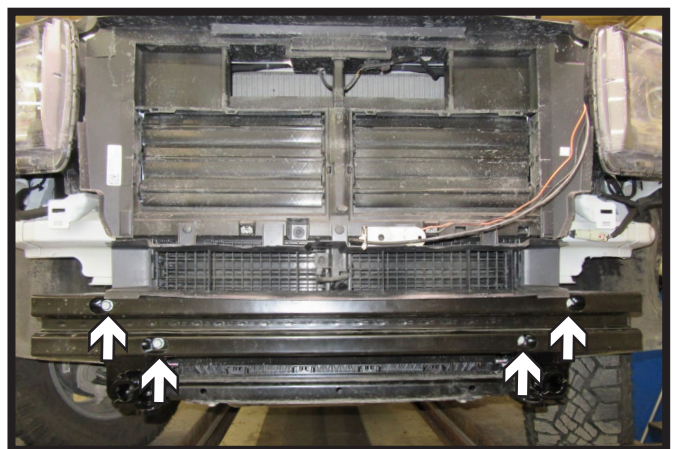


6. Before reinstalling bumper, attach the permanent baseplate safety cables to the provided convenience link on the baseplate. The photo above shows the recommended installation of the cables to frame of vehicle. Additional options may interfere with suggested mounting; in this case, secure the cables to a solid piece of the frame as described in the General Information sheet. Be sure the safety cables do not rub against any hoses or moving parts. Do this on **BOTH** sides of the vehicle.



7. Remove the two (2) bolts from the front of each baseplate (left). Reinstall the bumper, then reinstall the existing bolts using Loctite Red (right). Tighten fully at this time.

**** Use Loctite® Red on all bolt threads and tighten all bolts to the appropriate torque. ****



BX1746

2015-2022 Chevy Colorado (4WD) & 2017-2022 Chevy Colorado ZR2
2015-2020 GMC Canyon (4WD) (Includes Denali)
2021-2022 GMC Canyon (Includes AT4 & Shuttles)
Installation Instructions



8a. Reinstall the fascia and fascia cover.

Note: May need to trim around tabs and convenience links for proper fit.



8b. Reinstall the fascia and skid plate.

Note: May need to trim around tabs and convenience links for proper fit.

CUSTOMER SERVICE COMMITMENT

Blue Ox® is committed to providing you with exceptional customer care throughout your lifetime with our products. Our team is here to assist you with any questions you may have regarding the performance of your product. Simply call (402) 385-3051 and you can speak with our technical service team.

Additionally, please visit our website to see which rallies our Destination America team will be attending. For a nominal fee, our service technician will service your towing system to ensure it's in proper working condition. Also, as a commitment to our customers, should you visit our factory, you can stay at our full service Blue Ox® campground at no charge along with enjoying a factory tour.

Again, thank you for being our customer and for the confidence you have shown in the performance of our products. It is because of customers like you we enjoy the success we have today.

© 2016 Blue Ox
One Mill Road, Industrial Park
Pender, Nebraska 68047
Phone: (402) 385-3051
Fax: (402) 385-3360
www.blueox.com

General Information

1. Ensure that your product(s) are registered online at www.blueox.com. It is crucial to register your product(s) so that you may be alerted of product offerings, updates, upgrades, maintenance and safety bulletins, and/or recalls.
2. **It is the owner's responsibility to inspect all towing equipment for cracked welds, missing or worn parts and loose bolts before each towing trip.** Be sure to use Loctite® Red on all bolts and tighten to the recommended specifications.
3. **It is the owner's responsibility to hook up all towing equipment per manufacturer's instructions/ recommendations.**
4. Remove the attachment tabs when not in use (if applicable).

Notice To Baseplate Installer

1. It is YOUR responsibility to watch for:

- Oil cooler and air conditioner lines
- Electrical wires and hoses
- Missing parts or attaching points on the frame

**** If the baseplate is improperly installed and is against a wire or hose, it could cause fluid leaks or electrical shorts some time after the actual baseplate installation.**

Permanent Baseplate Safety Cable Installation

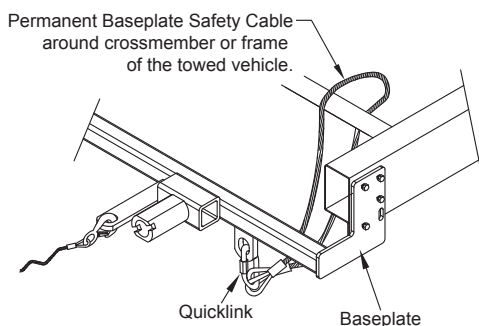
Permanent baseplate safety cables are strongly recommended when towing a vehicle with a tow bar. The principle function of the permanent baseplate safety cables is to prevent the towed vehicle from breaking loose in the event the connection between the frame of the towed vehicle and the baseplate fails or becomes disconnected. The cables must be connected from the baseplate to the frame rail or cross member of the vehicle's frame. The illustrations below show the possible arrangements recommended by Blue Ox®. Each permanent baseplate safety cable must have an adequate weight rating for the towing system. The weight rating of the two (2) cables together will not qualify.

Do not mount the permanent baseplate safety cables against wires, hoses or brake lines.

These permanent baseplate safety cables should remain installed as long as the baseplate is installed on the vehicle. Permanent baseplate safety cables are to be used in conjunction with, and NOT a replacement for legally required safety cables attaching the towed vehicle to the towing vehicle.

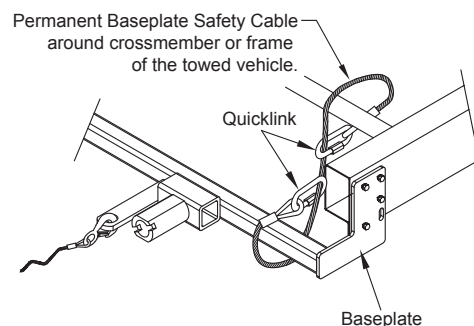
Option #1

(Baseplates with Convenience Link Tabs)



Option #2

(Baseplates with out Convenience Link Tabs)



BLUE OX ORIGINAL PURCHASERS THREE YEAR LIMITED WARRANTY

Automatic Equipment Manufacturing Company ("Automatic") warrants to the original (first) retail purchaser that this product, manufactured by Automatic, shall be free from defect in material and workmanship under normal use and service for a period of three years from the date of delivery.

During said three-year period, Automatic will repair or replace any parts that have been returned by the original purchaser, to the factory, transportation prepaid, and in Automatic's sole and absolute opinion found to be defective.

Limitations on Warranty Coverage:

Coverage under this warranty will be valid only if the customer warranty card is returned by the original purchaser within 30 days of purchase.

Coverage under this warranty will be effective only when a copy of the original invoice, showing date and place of purchase, accompanies any claim for warranty. This warranty is NON TRANSFERABLE.

This limited warranty will not cover, in any way or form, any alleged damages caused by incorrect or improper installation, improper use, modification or neglect of product, failure to properly service and maintain, misuse, act of God, accident or failure of the user to follow guidelines contained in the instructional material provided by Automatic.

This warranty does not cover normal wear and tear, paint or rust.

Warrantor assumes no responsibility to the owner for loss of use of product, loss of time, inconvenience or any other damage consequential or otherwise. Including, but not limited to mileage, expense of transporting of product, return shipping expense, mechanics travel time, telephone, road service, towing, and rental during repairs, travel, lodging, loss or damage to personal property or loss of earnings.

REPAIR OR REPLACEMENT AS SET FORTH IN THIS LIMITED WARRANTY IS THE SOLE EXCLUSIVE REMEDY OF THE PURCHASER. AUTOMATIC SHALL NOT BE LIABLE FOR ANY INCIDENTAL OR CONSEQUENTIAL DAMAGES FOR BREACH OF ANY EXPRESS OR IMPLIED WARRANTY ON THIS PRODUCT. EXCEPT TO THE EXTENT PROHIBITED BY APPLICABLE LAW, ANY IMPLIED WARRANTY OF MERCHANTABILITY OR FITNESS FOR A PARTICULAR PURPOSE ON THIS PRODUCT IS LIMITED IN LENGTH TO THE DURATION OF THIS WARRANTY.

Please visit <http://blueox.com/warranty/> to register your warranty

