

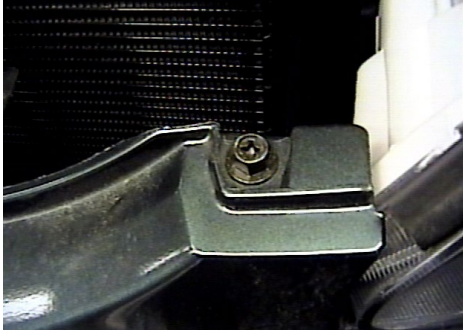


Strong As An Ox™

## BX3755 Installation Instructions 2002-04 Toyota Camry LE

Serial No.

The front fascia and metal bumper are removed for baseplate installation. Holes need to be drilled. The BX8869 Tail Light Wiring Kit is available for the vehicle. Attachment Tabs are 20 inches center to center and a height of 13 1/2 inches.



1. Remove two metric bolts with the 10MM socket, both sides, and one push pin on top side of fascia.



2. Using the 10MM socket, remove seven metric bolts on the bottom side of fascia.



3. Just forward of front tires, on fascia's corner, remove one metric bolt with the 10MM socket, both sides.



4. Just outside of head light, pull fascia corners to the side and forward to relieve fascia retainer clip, both sides, and set fascia aside.



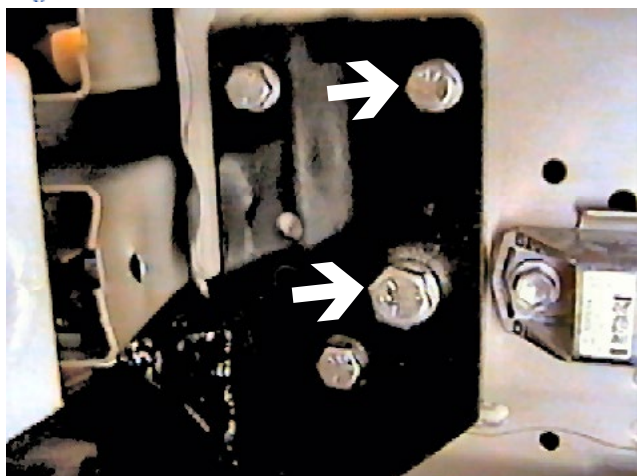
5. Disconnect wire harness from back and top side of metal bumper. Pull molded styrofoam forward and set aside.



6. Using the 14MM socket, remove 6 metric bolts from the metal bumper, pull forward and set aside.



Strong As An Ox™



7. Align back holes on baseplate with existing holes on frame and clamp to frame with the vise grips. **Some models may require these holes to be drilled out.** Then insert 1/2" whiz nut into frame end to align with existing lower back hole, fasten 1/2" hex bolt and lock washer, both sides. Insert 3/8" nut plate into frame end to align with the upper existing hole, fasten 3/8" hex bolt and lock washer, both sides. While maintaining a level position for the attachment tabs, tighten all bolts. Using the baseplate as a template drill remaining holes into frame with the 13/32" drill bit. Insert small 3/8" nut plate into frame end to align with the two front drilled holes, tighten 3/8" hex bolt and lock washer, both sides. Install 3/8" bolt into lower drilled hole, tighten 3/8" hex nut and lock washer, both sides. **Be sure and use Loctite on all bolts before tightening. Tighten all bolts according to the Torque Chart in the General Instructions sheet.**

8. Reinstall metal bumper and tighten all bolts. Using the baseplate as a template drill the holes on the bottom side of the metal bumper with the 13/32" drill bit. Insert large 3/8" nut plate into end of metal bumper to align with drilled hole, fasten 3/8" hex bolt and lock washer, both sides. **Be sure to use Loctite on all bolts before tightening. Tighten all bolts according to Torque Chart in the General Instruction sheet.**

9. Reinstall wiring harness on metal bumper, molded styrofoam and fascia. Be sure all electrical connections are properly secured.
10. The dimensional variations between otherwise identical cars can be considerable. While the location and size of the holes in the baseplate were designed to allow for easy installation, it may be necessary to file a hole slightly to allow a bolt to clear.
11. Install the tow bar and safety cables according to the instructions included in their packages.
12. Do **not** substitute other devices if the tow bar pin and clip are lost.
13. **DEALER OR INSTALLER: BE CERTAIN THE USER RECEIVES THE INSTRUCTION SHEET.**



Strong As An Ox™

## Tools Required

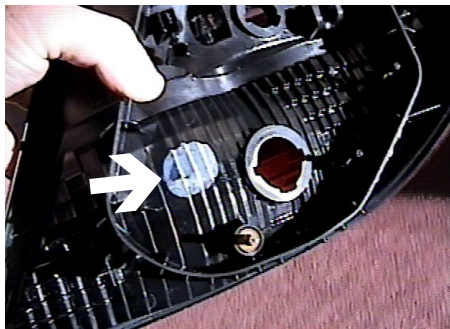
10MM Socket  
14MM Socket  
Vise Grips

9/16" Socket  
3/4" Socket  
Loctite® Red

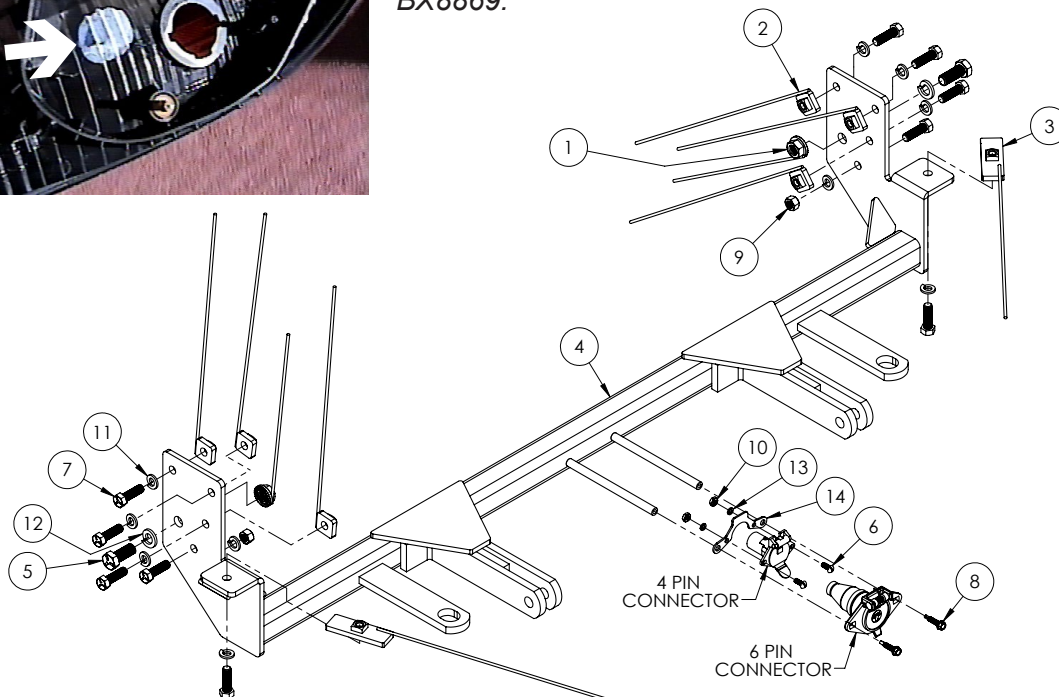
13/32" Drill Bit  
17/32" Drill Bit

## Parts List

Ref. No.	Qty.	Part No.	Description
1	2	61-4029	1/2-13, Whiz Nut, with Wire
2	6	61-5208	Weldment, 3/8-16, Nut Plate, with Wire
3	2	61-5556	Weldment, 3/8-16, Nut Plate, with Wire
4	1	61-5983	Weldment, Base Plate, BX3755
5	2	201-0011	1/2-13 x 1 1/4 Hex Bolt, Grd. 5, ZP
6	2	201-0192	#10-32 x 1/2 Slot, Rd. Hd. Screw
7	10	201-0368	3/8-16 x 1 1/4 Hex Bolt, Grd. 5, ZP
8	2	201-0979	#12-14 x 1" Self Drilling Screw, ZP
9	2	202-0003	3/8-16 Hex Nut
10	2	202-0047	#10-32 Hex Nut
11	10	203-0010	3/8 Lock Washer, ZP
12	2	203-0012	1/2 Lock Washer, ZP
13	2	203-0054	#10 Lock Washer
14	1	299-0685	Electrical Bracket
15	2	226-0046	Baseplate Safety Cable, 36" Class III (Not Shown)
16	2	229-0359	Quicklink, 3/8, ZP (Not Shown)



Location of drill hole for the BX8869.



**IMPORTANT:** Use only genuine factory replacement parts on your Base Plate. Do not substitute homemade or nontypical parts. If a bolt is lost or in need of replacement, for your safety and the preservation of your Base Plate, be sure to use a replacement bolt of the same grade (Usually Grade 5, refer to parts list). Repair parts may be ordered through your nearest **Blue Ox** dealer or distributor.

# General Information

1. Ensure that your product(s) are registered online at [www.blueox.com](http://www.blueox.com). It is crucial to register your product(s) so that you may be alerted of product offerings, updates, upgrades, maintenance and safety bulletins, and/or recalls.
2. **It is the owner's responsibility to inspect all towing equipment for cracked welds, missing or worn parts and loose bolts before each towing trip.** Be sure to use Loctite® Red on all bolts and tighten to the recommended specifications.
3. **It is the owner's responsibility to hook up all towing equipment per manufacturer's instructions/recommendations.**
4. Remove the attachment tabs when not in use (if applicable).

## Notice To Baseplate Installer

### 1. It is YOUR responsibility to watch for:

- Oil cooler and air conditioner lines
- Electrical wires and hoses
- Missing parts or attaching points on the frame

\*\* If the baseplate is improperly installed and is against a wire or hose, it could cause fluid leaks or electrical shorts some time after the actual baseplate installation.

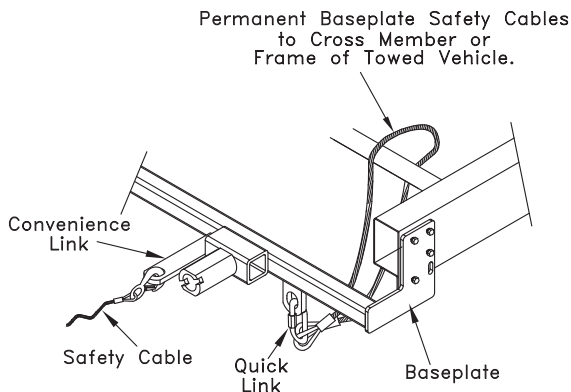
## Permanent Baseplate Safety Cable Installation

Permanent baseplate safety cables are strongly recommended when towing a vehicle with a tow bar. The principle function of the permanent baseplate safety cables is to prevent the towed vehicle from breaking loose in the event the connection between the frame of the towed vehicle and the baseplate fails or becomes disconnected. The cables must be connected from the baseplate to the frame rail or cross member of the vehicle's frame. The illustrations below show the possible arrangements recommended by Blue Ox®. Each permanent baseplate safety cable must have an adequate weight rating for the towing system. The weight rating of the two (2) cables together will not qualify.

***Do not mount the permanent baseplate safety cables against wires, hoses or brake lines.***

These permanent baseplate safety cables should remain installed as long as the baseplate is installed on the vehicle. Permanent baseplate safety cables are to be used in conjunction with, and NOT a replacement for legally required safety cables attaching the towed vehicle to the towing vehicle.

### OPTION #1



### OPTION #2

