



# INSTALLATION GUIDE

**2022+ Subaru WRX Baffled Oil Catch Can, PCV Side**

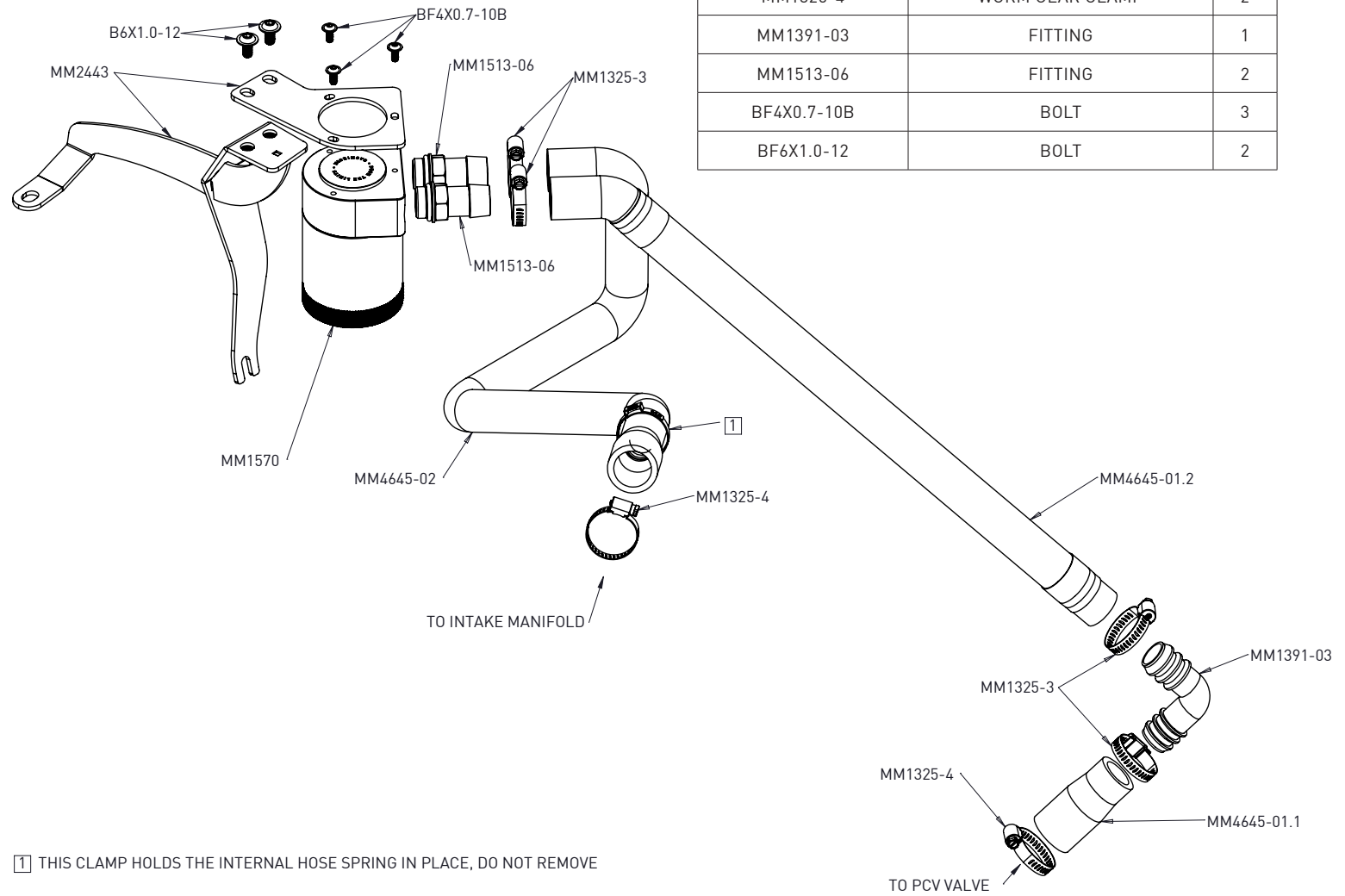
**SKU: MMBCC-WRX-22**

## TABLE OF CONTENTS

- Pg 1** RESOURCES AND CONTACT INFORMATION
- Pg 2** PARTS BREAKDOWN
- Pg 3** IMPORTANT SAFETY INFORMATION
  - SUPPLIED PARTS
  - REQUIRED TOOLS
  - INSTALLATION INSTRUCTIONS
- Pg 7** DISPOSAL INSTRUCTIONS
  - WARRANTY INFORMATION

## RESOURCES & CONTACT

-  **CALL 1-877-GOMISHI**  
CUSTOMER SERVICE HOURS: MON-FRI 8:30AM-5:00PM EST
-  **MISHIMOTO**
-  **GOMISHIMOTO**
-  **MISHIMOTO**
-  **WEBSITE**  
[WWW.MISHIMOTO.COM](http://WWW.MISHIMOTO.COM)
-  **ENGINEERING BLOG**  
[WWW.MISHIMOTO.COM/ENGINEERING](http://WWW.MISHIMOTO.COM/ENGINEERING)



PARTS BREAKDOWN		
PART NUMBER	DESCRIPTION	QTY
MM2443	BRACKET	1
MM1570	CATCH CAN	1
MM4645-01.1	HOSE	1
MM4645-01.2	HOSE	1
MM4546-02	HOSE	1
MM1325-3	WORM GEAR CLAMP	4
MM1325-4	WORM GEAR CLAMP	2
MM1391-03	FITTING	1
MM1513-06	FITTING	2
BF4X0.7-10B	BOLT	3
BF6X1.0-12	BOLT	2

1 THIS CLAMP HOLDS THE INTERNAL HOSE SPRING IN PLACE, DO NOT REMOVE

## IMPORTANT SAFETY INFORMATION

- › Mishimoto recommends you use safety glasses and protective gloves during the installation of our products
- › Raise vehicle only on jack stands or on a vehicle lift
- › Allow vehicle to cool completely prior to attempting installation
- › Do not run the engine or drive the vehicle while overheating; serious damage can occur
- › Please dispose of any liquids properly
- › Mishimoto is not responsible for any vehicle damage or personal injury due to installation errors, misuse, or removal of Mishimoto products
- › If you need any assistance while installing our products, reach out to our Customer Service Team at 1-877-GOMISHI

## SUPPLIED PARTS

- |                                    |  |
|------------------------------------|--|
| (1) BAFFLED CATCH CAN              | (1) SHORT STRAIGHT HOSE                              |
| (2) STRAIGHT FITTINGS              | (1) STRAIGHT HOSE WITH 45°<br>END AND ABRASION GUARD |
| (1) CATCH CAN BRACKET              |  |
| (1) MOUNTING BRACKET               | (1) BENT HOSE  |
| (3) M4 BUTTON HEAD<br>FLANGE BOLTS | (4) 16-25MM WORM<br>GEAR CLAMPS                      |
| (2) M6 BUTTON HEAD<br>FLANGE BOLTS | (2) 20-32MM WORM<br>GEAR CLAMPS                      |
| (1) 90° FITTING                    |  |

## REQUIRED TOOLS

- |                   |                       |
|-------------------|-----------------------|
| 22MM WRENCH       | 2.5MM ALLEN KEY       |
| SOCKET DRIVER     | 4MM ALLEN KEY         |
| DRIVER EXTENSIONS | FLAT HEAD SCREWDRIVER |
| SWIVEL ADAPTER    | <b>OPTIONAL</b>       |
| 12MM SOCKET       | LONG REACH NEEDLE     |
| 10MM SOCKET       | NOSE PLIERS           |
| 7MM SOCKET        | REMOTE-ACTION HOSE    |
| PLIERS            | CLAMP TOOL            |

## INSTALLATION INSTRUCTIONS

**01.** Using a 22mm wrench install the (2) supplied straight fittings into the catch can lid.



**02.** Using a 2.5mm allen key, attach the catch can bracket to the catch can lid as shown in the photo below with the supplied (3) M4 bolts.



**03.** Install the supplied 90° fitting into the smaller diameter end of the short straight hose and secure with (1) supplied 16-25mm worm gear clamp. Then install the other end of the 90° fitting into the straight end of the hose with the abrasion guard and secure with (1) supplied 16-25mm worm gear clamp. **The hose should look like the photo on the next page.**

Continued on next page



**04.** Using a 12mm socket, remove the (4) bolts securing the intercooler. Then, using a flat head screwdriver unclip the spring clip on the charge pipe coupler. Remove the intercooler from the engine.



**05.** Remove the OEM PCV to intake manifold hose using pliers to loosen the (2) spring clamps. Long reach needle nose pliers and/or a remote-action hose clamp tool will make this much easier.



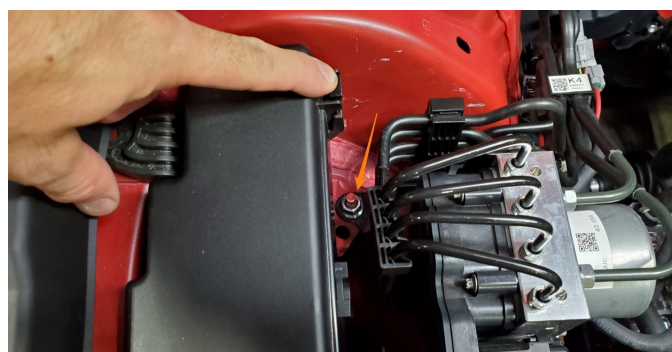
**06.** Using a 10mm socket loosen, but do not remove, the bolt securing the ground strap shown in the photo below.



**07.** Using a 10mm socket, remove the bolt shown in the photo below so the electrical box can be pushed slightly out of the way. The rubber engine bay trim may need to be pushed back to access this bolt.



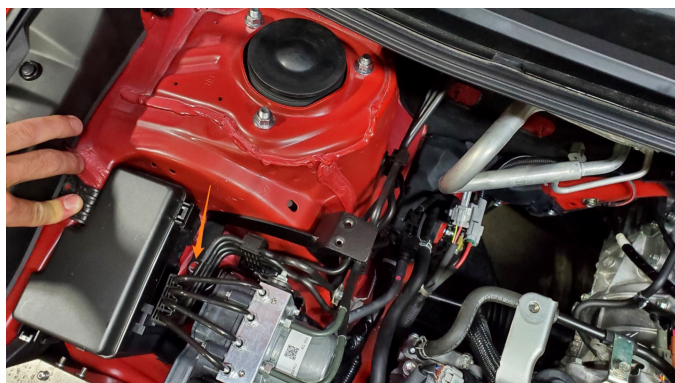
**08.** Using a 12mm socket, remove the bolt from the stud shown in the photo below.



Continued on next page

**09.** Install the supplied mounting bracket onto the stud the nut was just removed from in step 8 and behind the ground strap that was loosened in step 6. Reinstall and tighten the nut onto the stud and tighten the bolt on the ground strap.

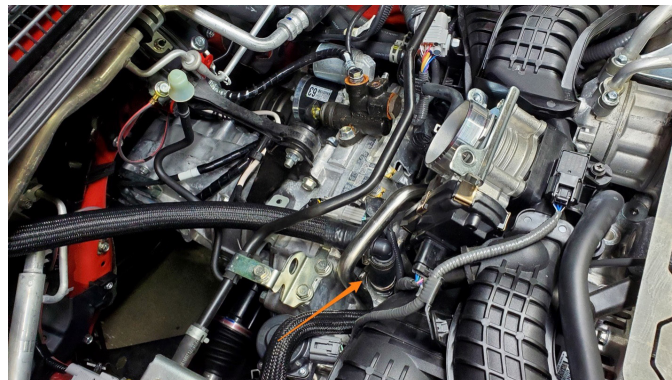
**IMPORTANT:** The bracket must be installed **BEHIND** the metal clip on the ground strap, or the connection will not ground properly.



**10.** Using a 10mm socket, reinstall the bolt for the electrical box that was removed in step 7.

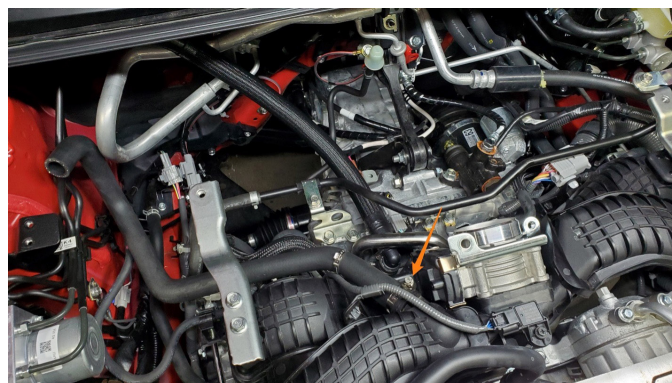


**11.** Install the straight end of the hose that was assembled in step 3 onto the PCV valve and secure with (1) supplied 20-32mm worm gear clamp. A 7mm socket, swivel adapter, and extensions may be needed to reach the worm gear clamp to tighten.



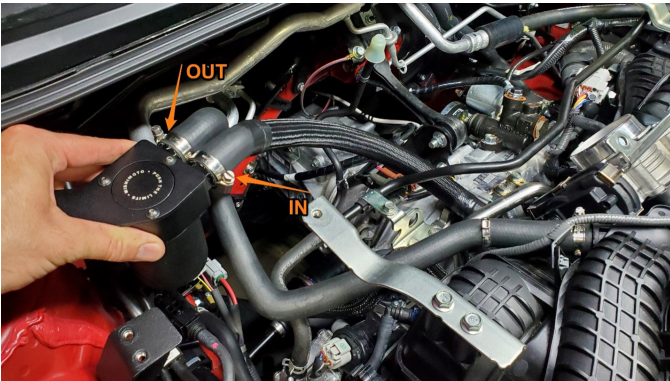
**12.** Install the larger end of the supplied bent hose onto the intake manifold and secure with (1) supplied 20-32mm worm gear clamp.

**Note:** do not remove the permanent clamp that is preinstalled onto this hose. This clamp secures the internal spring to prevent it from entering the intake manifold.



**13.** Install the hose from the intake manifold, that was just installed in step 12, onto the catch can port labeled "OUT" and secure with (1) supplied 16-25mm worm gear clamp. Then install the hose from the PCV valve, that was installed in step 11, onto the catch can port labeled "IN" and secure with (1) supplied 16-25mm worm gear clamp. (Image on next page)

Continued on next page



**14.** Using a 4mm allen key, secure the catch can bracket to the mounting bracket with the (2) supplied M6 bolts. These bolts can be removed to get better access to unscrew the catch can bottom for servicing.



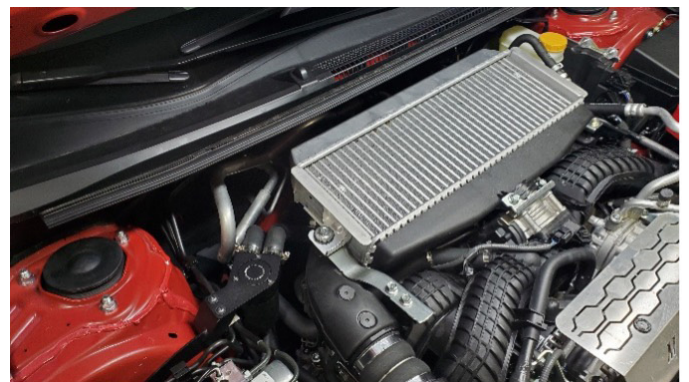
**15.** Reinstall the intercooler by reinstalling the (4) bolts and (1) spring clip that were removed in step 4. Ensure the spring clip is fully seated in the charge pipe coupler. The installation is now complete.



## BEFORE



## AFTER



**Congratulations! You have finished your installation.**

## DISPOSAL INSTRUCTIONS

- › Do not dispose of any product as unsorted municipal waste. Use separate collection facilities. Contact your local authority for information regarding the collection systems available.
- › Never improperly dispose of any coolant, oil, or other chemicals.

## WARRANTY INFORMATION



- › All claims must be accompanied with a picture of the Mishimoto product showing the issue for which the claim is being submitted.
- › Mishimoto asks that the customer inspect their purchased item for any damage immediately upon arrival.
- › Any product deemed dead on arrival (DOA) must be claimed within 14 business days of delivery. Claims outside of this time frame will not be covered under the Mishimoto Lifetime Warranty.
- › This warranty does not include payment and/or reimbursement of the cost of labor in connection with the removal of any product returned pursuant to the warranty policy or in connection with the installation of any replacement items provided under the warranty policy.
- › Mishimoto has the right to refuse a claim at any time.

- › When Mishimoto accepts a claim, Mishimoto retains full discretion to choose if it will: (i) repair or replace purchaser's original Mishimoto product; (ii) replace purchaser's original Mishimoto product with the most current available model; or (iii) provide the purchaser with a gift card redeemable on [Mishimoto.com](https://www.mishimoto.com) in the amount of the original purchase price of the original Mishimoto product. The provision of a replacement of a Mishimoto product is subject to availability and Mishimoto retains the right to substitute any warranty claim item with a comparable item or credit at any time.
- › If Mishimoto determines that it will provide a replacement item in connection with a claim under this warranty policy, and such item is out of stock, Mishimoto will place the customer on backorder and ship the replacement product to the purchaser once it becomes available.
- › Mishimoto is not liable for incorrect shipments in connection with a claim if a claim form is completed incorrectly, or if a model number is not included in a claim.
- › If you have a vehicle equipped with an automatic transmission, please make sure to specify this within the text box on the claim form. Mishimoto is not responsible for incorrect replacement shipments if transmission type is not indicated.



**WARNING**  
Cancer and  
Reproductive Harm  
[www.P65Warnings.ca.gov](https://www.P65Warnings.ca.gov)

This product can expose you to chemicals which are known to the state of California to cause cancer. For more information visit: [www.p65warnings.ca.gov](https://www.p65warnings.ca.gov)