

INSTALLATION GUIDE

Transmission Cooler, Fits 2005–2011 Toyota Tacoma

SKU: MMTC-TAC-05

TABLE OF CONTENTS

- Pg 1** RESOURCES AND CONTACT INFORMATION
- Pg 2** IMPORTANT SAFETY INFORMATION
 - SUPPLIED PARTS
 - REQUIRED TOOLS
 - INSTALLATION INSTRUCTIONS
- Pg 6** DISPOSAL INSTRUCTIONS
- WARRANTY INFORMATION

RESOURCES & CONTACT

-  **CALL 1-877-GOMISHI**
CUSTOMER SERVICE HOURS: MON-FRI 8:30AM-5:00PM EST
-  **MISHIMOTO**
-  **GOMISHIMOTO**
-  **MISHIMOTO**
-  **WEBSITE**
WWW.MISHIMOTO.COM
-  **ENGINEERING BLOG**
WWW.MISHIMOTO.COM/ENGINEERING

IMPORTANT SAFETY INFORMATION

- › Mishimoto recommends you use safety glasses and protective gloves during the installation of our products
- › Raise vehicle only on jack stands or on a vehicle lift
- › Allow vehicle to cool completely prior to attempting installation
- › Do not run the engine or drive the vehicle while overheating; serious damage can occur
- › Please dispose of any liquids properly
- › Mishimoto is not responsible for any vehicle damage or personal injury due to installation errors, misuse, or removal of Mishimoto products
- › If you need any assistance while installing our products, reach out to our Customer Service Team at 1-877-GOMISHI

SUPPLIED PARTS

- | | |
|------------------------|------------------------|
| 9X M6 BOLTS | 4X MOUNTING BRACKETS |
| (NOTE: ONE IS SHORTER) | 2X HOSE SECTIONS |
| 1X M8 BOLT | 1X TRANSMISSION COOLER |
| 4X WORM GEAR CLAMPS | |

REQUIRED TOOLS

- | | |
|-------------|----------------------|
| ¼" RATCHET | 13MM SOCKET |
| 10MM WRENCH | PLIERS |
| 10MM SOCKET | FLATHEAD SCREWDRIVER |
| 12MM SOCKET | |

INSTALL TIME: 2 HOURS

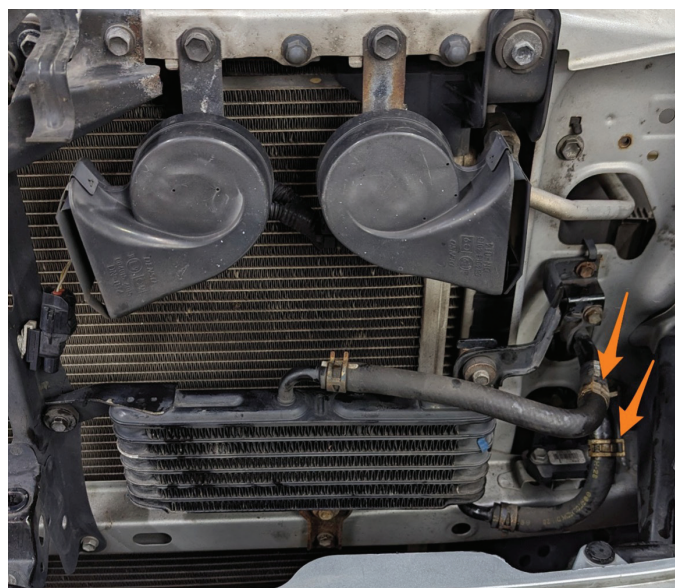
INSTALL DIFFICULTY: 

INSTALLATION INSTRUCTIONS

1. Remove the two pop clips and two M6 bolts from the grill. Carefully pull the grill up to disengage the clips. Remove the grill.

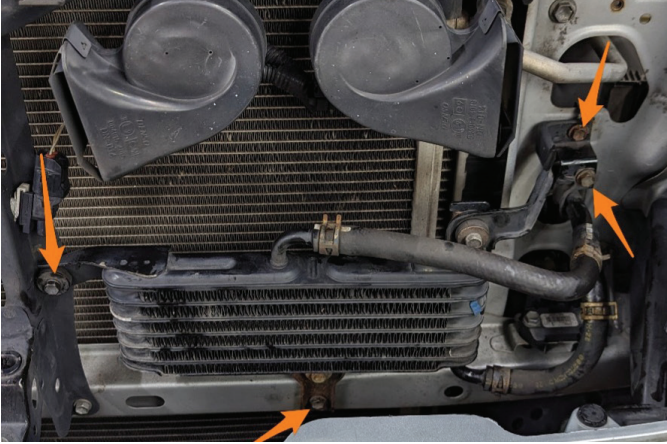


2. Loosen the spring clamps and disconnect the transmission cooler hoses. The hoses can remain attached to the transmission cooler.



3. Remove the four M6 bolts holding the transmission cooler. Remove the transmission cooler. (Image on next page)

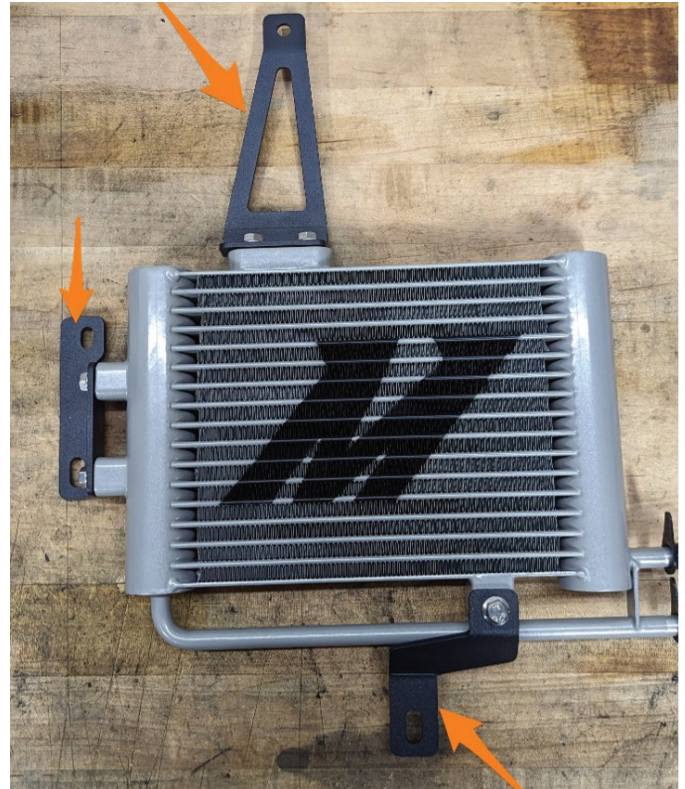
Continued on next page



4. Remove the M8 bolt from the left horn bracket. Then unclip the ambient temperature sensor from the radiator support. Let both items hang loose for now.

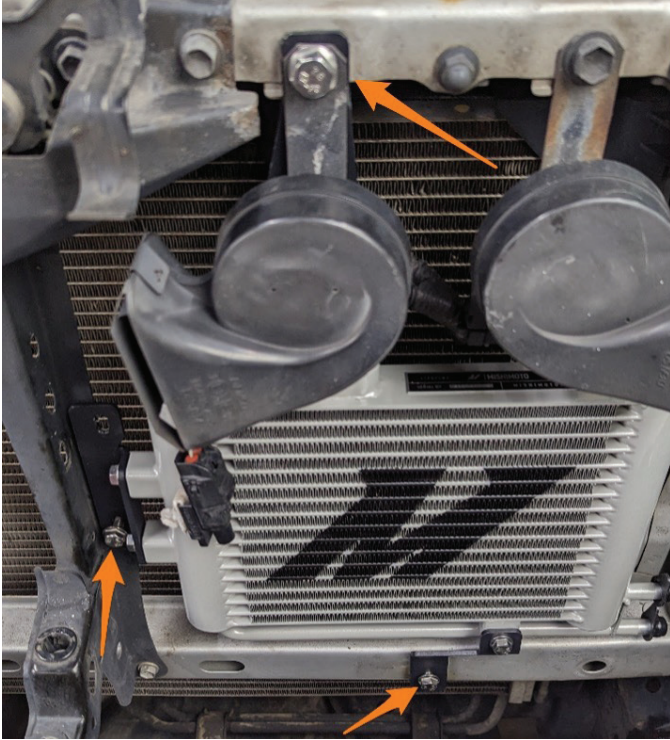


5. As shown, use five included M6 bolts to attach the three mounting brackets to the transmission cooler. Leave all hardware loose for now.

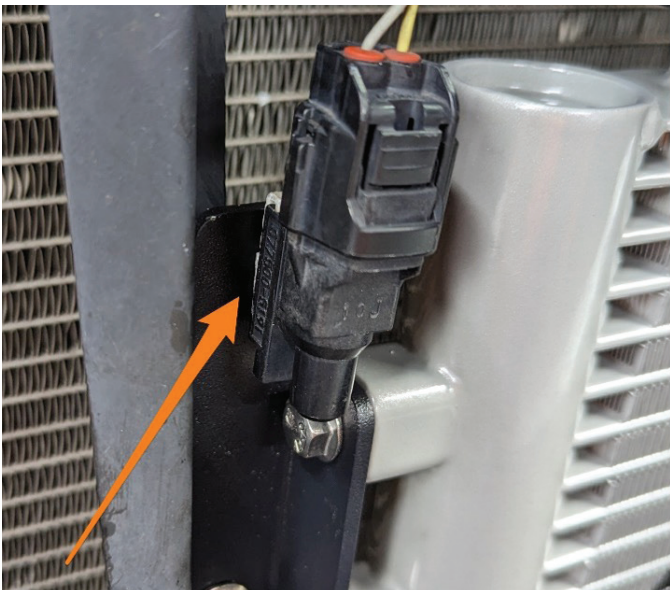


6. Install the transmission cooler using the supplied M8 and M6 bolts as shown. Make sure the top transmission cooler bracket goes behind the horn bracket. Tighten all hardware. [\[Image on next page\]](#)

Continued on next page



7. Clip the ambient temperature sensor into the hole of the bracket as shown.



8. Install the transmission hose bracket using the supplied M6 bolt.

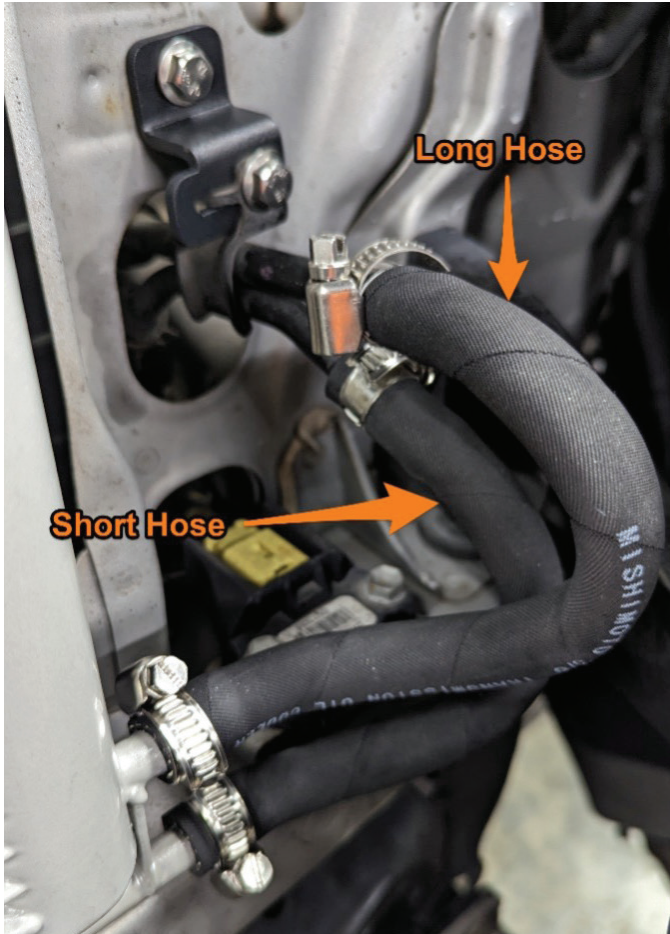


9. Bolt the hard transmission lines to the bracket using the shorter M6 bolt.



10. Connect the hard transmission lines to the transmission cooler using the two supplied sections of hoses as shown. Note the hose lengths are different. Next, secure the hoses with the included hose clamps. (Image on next page)

Continued on next page



11. Reinstall the grill.

12. Check the transmission fluid level and refill if needed.

Congratulations! You have now completed the installation!

Continued on next page

DISPOSAL INSTRUCTIONS

- › Do not dispose of any product as unsorted municipal waste. Use separate collection facilities. Contact your local authority for information regarding the collection systems available.
- › Never improperly dispose of any coolant, oil, or other chemicals.

WARRANTY INFORMATION



- › All claims must be accompanied with a picture of the Mishimoto product showing the issue for which the claim is being submitted.
- › Mishimoto asks that the customer inspect their purchased item for any damage immediately upon arrival.
- › Any product deemed dead on arrival (DOA) must be claimed within 14 business days of delivery. Claims outside of this time frame will not be covered under the Mishimoto Lifetime Warranty.
- › This warranty does not include payment and/or reimbursement of the cost of labor in connection with the removal of any product returned pursuant to the warranty policy or in connection with the installation of any replacement items provided under the warranty policy.
- › Mishimoto has the right to refuse a claim at any time.

- › When Mishimoto accepts a claim, Mishimoto retains full discretion to choose if it will: (i) repair or replace purchaser's original Mishimoto product; (ii) replace purchaser's original Mishimoto product with the most current available model; or (iii) provide the purchaser with a gift card redeemable on Mishimoto.com in the amount of the original purchase price of the original Mishimoto product. The provision of a replacement of a Mishimoto product is subject to availability and Mishimoto retains the right to substitute any warranty claim item with a comparable item or credit at any time.
- › If Mishimoto determines that it will provide a replacement item in connection with a claim under this warranty policy, and such item is out of stock, Mishimoto will place the customer on backorder and ship the replacement product to the purchaser once it becomes available.
- › Mishimoto is not liable for incorrect shipments in connection with a claim if a claim form is completed incorrectly, or if a model number is not included in a claim.
- › If you have a vehicle equipped with an automatic transmission, please make sure to specify this within the text box on the claim form. Mishimoto is not responsible for incorrect replacement shipments if transmission type is not indicated.



WARNING
Cancer and
Reproductive Harm
www.P65Warnings.ca.gov

This product can expose you to chemicals which are known to the state of California to cause cancer. For more information visit: www.p65warnings.ca.gov