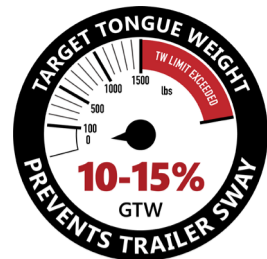


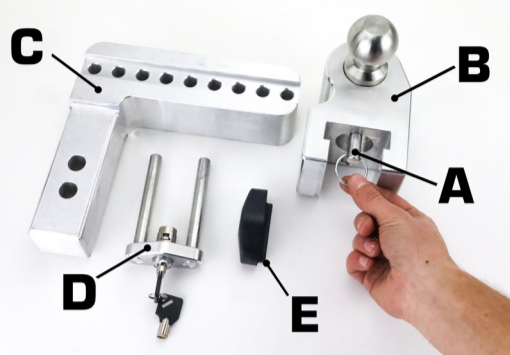


WEIGH SAFE DROP HITCH INSTRUCTION SHEET



STEP 1

ENSURE THE **WEIGH SAFE HITCH BALL PIN (A)** IS INSERTED FULLY INTO THE **WEIGH SAFE SLIDER (B)**. **DO NOT OPERATE WITHOUT WEIGH SAFE HITCH BALL PIN (A) IN PLACE.**



STEP 2

PLACE THE **WEIGH SAFE SLIDER (B)** AT THE DESIRED DROP ON THE **DRAW BAR (C)** TO ENSURE THAT YOUR VEHICLE AND TRAILER ARE PROPERLY POSITIONED.



STEP 3

ONCE YOU HAVE ACHIEVED THE DESIRED POSITION ALONG THE **DRAW BAR (C)**, INSERT THE **DUAL PIN KEY LOCK ASSEMBLY (D)** INTO THE **WEIGH SAFE SLIDER (B)** AND LOCK IN PLACE BY TURNING THE KEY.



STEP 4

PULL ON THE **DUAL PIN KEY LOCK ASSEMBLY (D)** TO ENSURE THAT THE LOCK HAS SECURELY ENGAGED AND PLACE THE **DUST LOCK COVER (E)** OVER THE LOCK. **DO NOT OPERATE WITHOUT MAKING SURE THE KEY LOCK ASSEMBLY (D) IS SECURELY LOCKED IN PLACE.**



! IMPORTANT SAFETY INFORMATION !

Ensure safety chains are attached between vehicle and trailer. **DO NOT** attach chains directly to hitch. Never exceed the **LOWER** rating between: A) Tow vehicle manufacturer's load **OR** B) Weigh Safe Hitch GTW hitch ratings: 7,500 lbs. (1-7/8" ball), 8,000 lbs. (2" ball), 12,500 lbs. (2-5/16" ball & 2" shank), 18,500 lbs. (2-5/16" ball & 2.5" shank), 21,000 lbs. (2-5/16" ball & 3" shank). Tongue Weight should be between **10-15 %** of gross trailer weight. Weigh Safe Hitch max tongue weight is 1,500 lbs. (2" shank) and 2,200 lbs. (2.5" & 3" shanks). Secure your Weigh Safe Hitch to a standard 2", 2.5" or 3" receiver with locking pin.

Weigh Safe!
MEASURES TONGUE WEIGHT



**SCAN
FOR
VIDEO**