

2021+ FORD PUMA ST Installation Instructions

View instructions and photos online

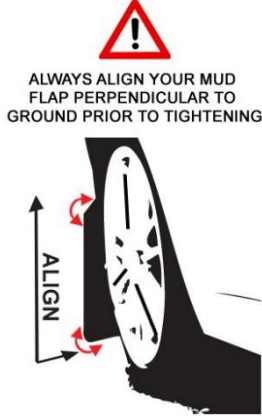
CARE AFTER INSTALLATION Once installed, vehicle owner is responsible for condition of mud flaps and all costs associated with replacing damaged or lost parts. Warranty covers manufacturer defect on new, never installed parts.

⚠ Watch for blind spots when parking ⚠ Avoid contact with curbs and objects that compress flaps with excessive force. Check wheel clearances, especially on vehicles equipped with aftermarket wheels and suspensions.

QUESTION ON INSTALLATION? CONTACT www.rallyarmor.com/support

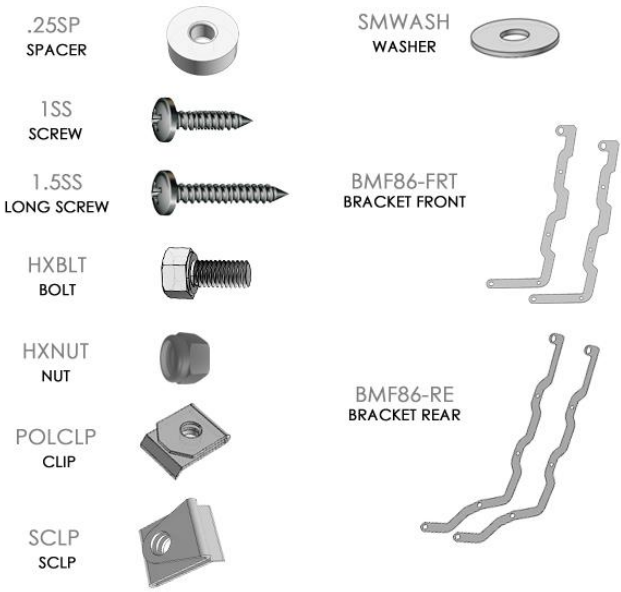
NEED TO PURCHASE REPLACEMENT PARTS? SEND RECEIPT OR PHOTO OF MUD FLAPS TO www.rallyarmor.com/support

IMPORTANT NOTES



INSTALLATION KIT CONTENTS

QUANTITY	PART	ITEM ID
2	SPACER	.25SP
6	SCREW	1SS
2	LONG SCREW	1.5SS
12	BOLT	HXBLT
12	NUT	HXNUT
4	CLIP	POLCLP
4	S CLIP	SCLP
20	WASHER	SMWASH
2	BRACKET FRONT	BMF86-FRT
2	BRACKET REAR	BMF86-RE



Recommended Tools Low-profile offset or ratcheting screw driver, 10mm wrench, 11mm wrench, flathead screwdriver.

Important Tips Installation should be done on an even surface. Do not use power tools to tighten hardware. Hand tools only. Avoid overtightening.

RALLY ARMOR - A BIT ABOUT OUR STANDARD IN MUD FLAPS

Rally Armor mud flaps are fabricated from a high grade polyurethane plastic that is rigorously reviewed for quality and consistency. As with all manufacturing processes, controlled conditions and multiple QC checkpoints minimize major irregularities, however certain very minor surface layer marks appear periodically. These are visual variations that do not affect construction nor do they impede the performance of the flaps. Most matte away as the material ages naturally with continued exposure to the outdoors. Each flap is unique in appearance yet all are structurally sound.

2021+ FORD PUMA ST Installation Instructions

FRONT MUD FLAP

Bracket & Hardware 1 x Front Flap → 1 x BMF86-FRT; 2 x 1SS; 2 x POLCLP; 3 x HXBLT; 3 x HXNUT; 5 x SMWASH

Turn the steering wheel towards the side you are working on to gain access to the inner wheel well area.

FIGURE A Remove 3 factory fasteners. Pull liner away from fender.

FIGURE B Install POLCLIP over mounts 1 & 2. Reinstall liner.

FIGURE C Subtly curve bracket to nest against fender liner. Do not bend bracket.

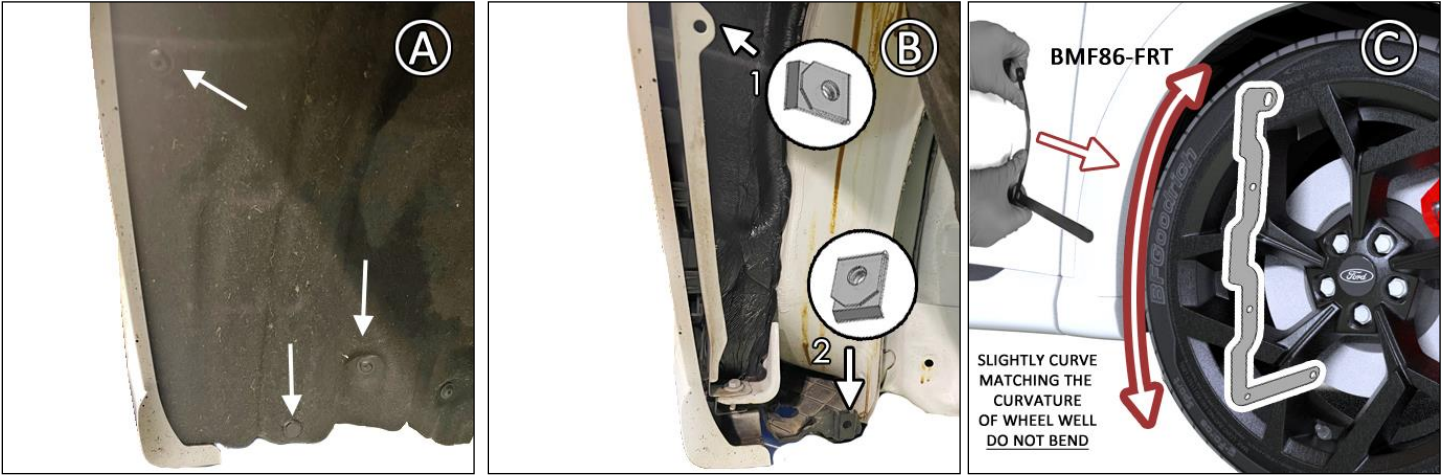
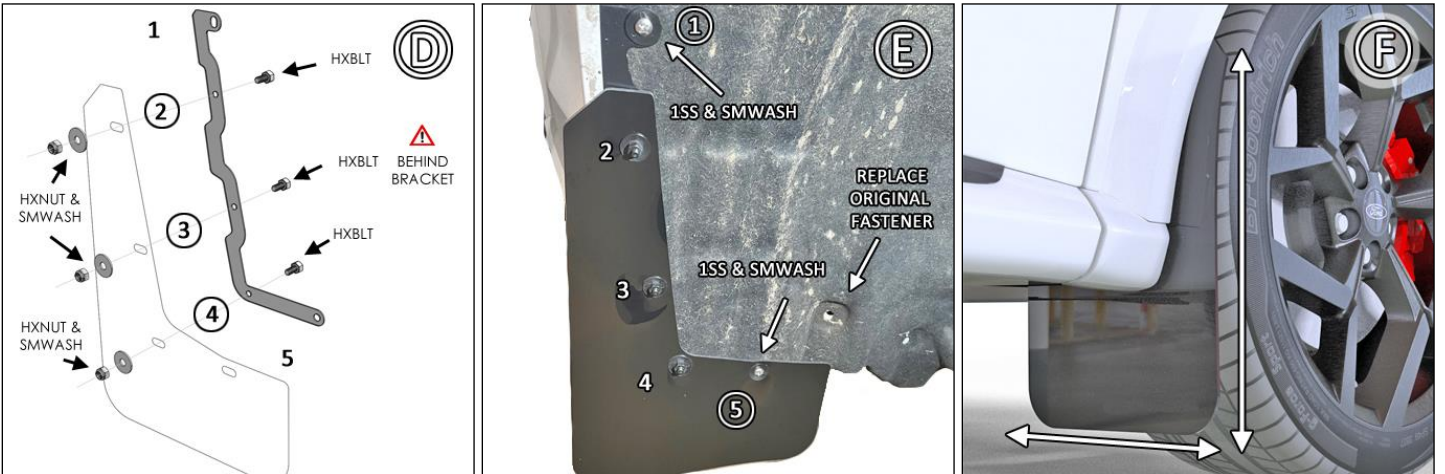


FIGURE D Position BMF86-FRT bracket behind mud flap. Stud facing forward, install HXBLT behind bracket, through flap on mounts 2 - 4. Install HXNUT & SMWASH on flap side. Do not fully tighten.

FIGURE E Place logo-side of flap and bracket facing vehicle rear against liner mounting points. Use 1SS & SMWASH for bracket upper and lower mounts 1 and 5. Hand tighten HXNUT 2 - 4.

FIGURE F Ensure mud flap is parallel to even ground. Hand tighten only until washers seated against mud flap. **Adjust as needed.**



2021+ FORD PUMA ST Installation Instructions

REAR MUD FLAP

Bracket & Hardware 1 x Rear Flap → 1 x BMF86-RE; 1 x .25SP; 1 x 1SS; 1 x 1.5SS; 3 x HXBLT; 3 x HXNUT; 2 x SCLP; 5 x SMWASH

FIGURE G Remove the 3 factory fasteners. Pull liner away from fender.

FIGURE H Utilizing rear portion of clip, install SCLP over upper and lower mounts. Reinstall liner.

FIGURE I Slightly curve bracket to contour against fender liner. Do not bend bracket.

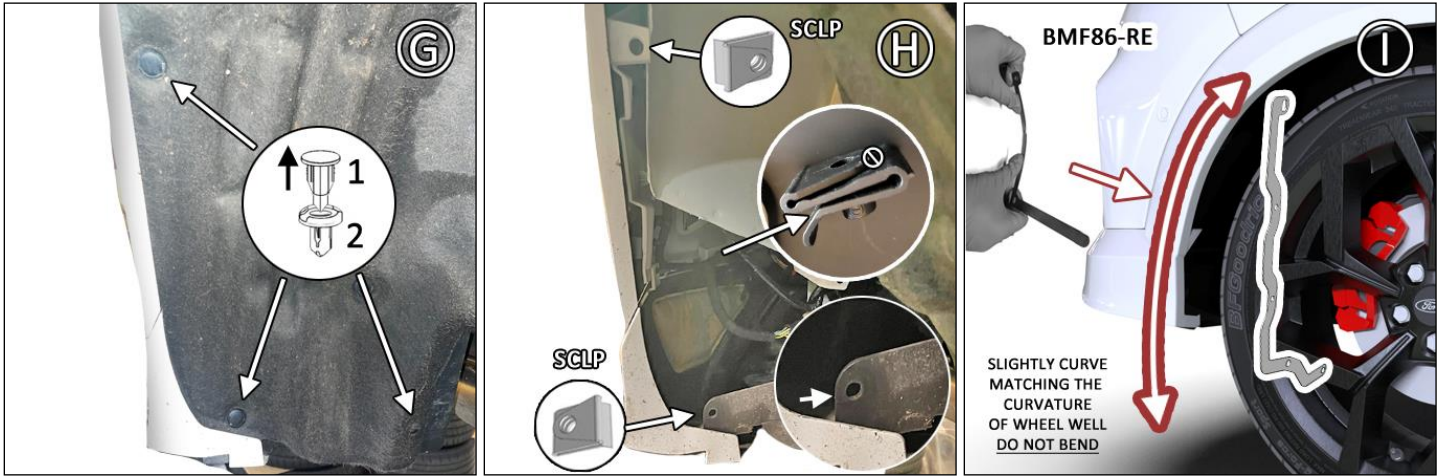
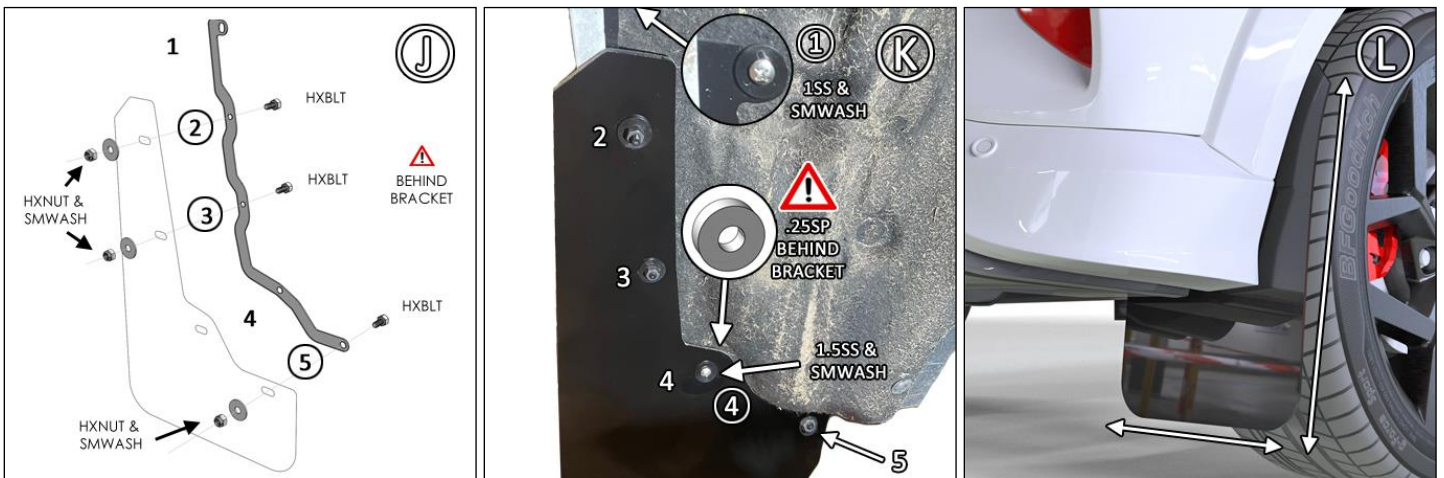


FIGURE J Position BMF86-RE bracket behind mud flap. Install HXBLT behind bracket, through mud flap, stud facing forward on mounts 2, 3 & 5. Install HXNUT & SMWASH on flap side. Do not fully tighten.

FIGURE K Place logo-side of flap and bracket facing vehicle rear against liner mounting points. Use 1SS & SMWASH for mount 1 and 1.5SS & SMWASH for mount 4. Note, .25SP installs **behind** bracket. Install lower bracket and flap underneath bumper.

FIGURE L Ensure mud flap is parallel to even ground. Hand tighten only until washers seated against flap. **Adjust as needed.**



IMF86



2021+ FORD PUMA ST Installation Instructions

