



BX2411

2014-2023 Dodge Durango (Includes Adaptive Cruise Control) Installation Instructions

Please read BOTH these Installation Instructions and the General Information sheet prior to installing or operating this equipment.

Attachment Tab Height: 18"

Attachment Tab Width: 27-1/2"

Serial Number



1. Blue Ox® towing products and accessories are intended to be installed by Blue Ox® Dealers who are familiar with our products and have the equipment and knowledge necessary to do “fit work”. If needed, Blue Ox® Dealers can be found at www.blueox.com or by contacting our Technical Service Department at (402) 385-3051.
2. Many Blue Ox® baseplates are designed to use existing holes and hardware to mount the baseplate to the towed vehicle. Even though bolts are there, do not assume they are adequate for baseplate mounting. Always use the hardware supplied in the hardware kit and existing hardware as specified in the installation instructions.

Bolt Torque Specifications

Torque in Foot-Pounds for Inch Bolts

| Bolt Size | Grade 5 | Grade 8 |
|-----------|---------|---------|
| 1/4" | 10 | 14 |
| 5/16" | 19 | 29 |
| 3/8" | 33 | 47 |
| 7/16" | 54 | 78 |
| 1/2" | 78 | 119 |
| 5/8" | 154 | 230 |
| 3/4" | 257 | 380 |

Bolt Torque Specifications

Torque in Foot-Pounds for Metric Bolts

| Bolt Size | Grade 8.8 | Grade 10.9 |
|-----------|-----------|------------|
| 6MM | 6 | 8 |
| 8MM | 16 | 22 |
| 10MM | 31 | 40 |
| 12MM | 54 | 70 |
| 14MM | 89 | 117 |
| 16MM | 161 | 230 |
| 18MM | 222 | 318 |

If the front of your vehicle looks different than this, please contact us at (402)385-3051.

BX2411
2014-2023 Dodge Durango (Includes Adaptive Cruise Control)
Installation Instructions



Reference your vehicle owner's manual for manufacturer's towing specifications.

Instruction Notes: The fascia and belly pan are removed and reinstalled for the baseplate installation. Some drilling and trimming is required.

Place all components that are removed on a flat, sturdy surface. All items will be reinstalled unless otherwise noted after the baseplate is installed.

The dimensional variations between otherwise identical vehicles can be considerable. While the baseplate was designed for easy installation, it may be necessary to tailor the baseplate slightly to compensate for vehicle manufacturer's tolerances.

The BX8848 4-Diode Wiring Kit is recommended for this model.

NOTICE

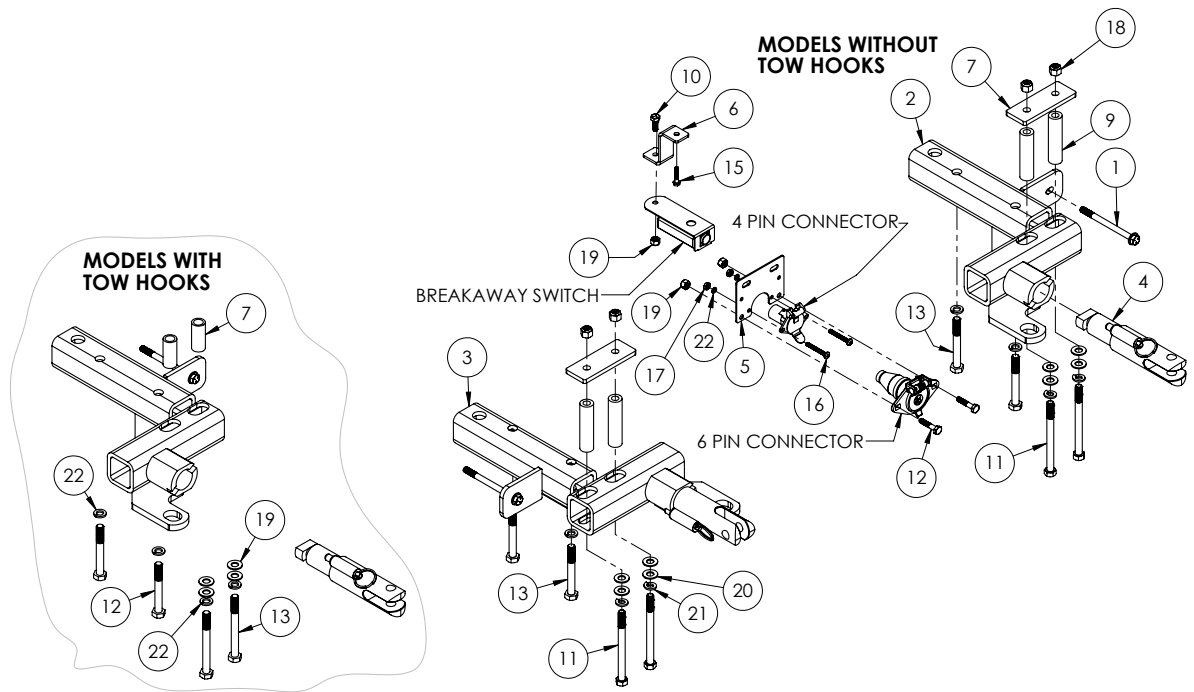
- Handling of some cosmetic parts when installing this product may require the use of protective covers, rags, specialty tools, etc. to prevent damage.
- When using power drills be aware of the dangers of torque and drill bit length.
- When using a reciprocating saw be aware of objects behind the cutting surface.
- Use a good quality paint to spray cut edges of frame to prevent rusting.
- Be sure that **ALL** electrical connections are plugged in and accessories are functioning properly before reinstalling the fascia.
- The baseplate is computer tested to your vehicle's GVWR, exceeding this weight will void the manufacturer's warranty.
- Be sure to use a sufficient amount of Loctite® Red on all bolt threads before tightening. Tighten all bolts according to the torque chart provided.
- Dealer or installer be certain the user receives these instruction sheets.
- If the baseplate is in an accident, it must be replaced. **DO NOT** use it again! An accident can cause unseen damage and using it again could result in more damage or serious injury. **DO NOT** use the baseplate if it is damaged or missing parts.

BX2411

2014-2023 Dodge Durango (Includes Adaptive Cruise Control) Installation Instructions

Tools Required

- Large Vise Grip
- Flat Screwdriver
- Phillips Screwdriver
- Utility Knife
- Torque Wrench
- Drill
- Rivet Gun
- Tape Measure
- Loctite® RED
- 8MM Socket
- 10MM Socket
- 13MM Socket
- 16MM Socket
- 17MM Socket
- 17MM Wrench
- 30MM Socket
- 30MM Wrench
- 3/8" Socket
- 3/8" Wrench
- 7/16" Socket
- 7/16" Wrench
- 9/16" Socket
- 9/16" Wrench
- 1/4" Drill Bit



| Item No. | Part No. | Description | Qty. |
|----------|--------------------------|--|------|
| 1..... | Existing | 4" Long Factory Bolt | 2 |
| 2..... | 61-7272 | BX2411 DS Baseplate | 1 |
| 3..... | 61-7273 | BX2411 PS Baseplate | 1 |
| 4..... | 62-3468 | Attachment Tab Assembly with Hole..... | 2 |
| 5..... | 101-6845 | Electrical Bracket..... | 1 |
| 6..... | 102-7056 | Breakaway Bracket..... | 1 |
| 7..... | 102-7106 | Locking Plate | 2 |
| 8..... | 107-3184 | Spacer Tube 3/4"Ø x 1-23/32" | 4 |
| 9..... | 107-3496 | Spacer Tube 3/4"Ø x 3" | 4 |
| 10..... | 201-0050 | 1/4"-20 x 3/4" Hex Head Bolt, Grade 5, ZP..... | 1 |
| 11..... | 201-0077 | 3/8"-16 x 4-1/2" Hex Head Bolt, Grade 5, ZP | 4 |
| 12..... | 201-0204 | 1/4"-20 x 1-1/4" Hex Head Bolt, Grade 5, ZP | 2 |
| 13..... | 201-0429 | 10MM-1.5 x 80MM Hex Head Bolt, Grade 8.8, ZP | 4 |
| 14..... | 201-0432 | 10MM-1.5 x 100MM Hex Head Bolt, Grade 10.9, ZP | 4 |
| 15..... | 201-0654 | #10-16 x 1" Self Drilling Screw | 1 |
| 16..... | 201-0679 | #10-32 x 1-1/2" Phillips Pan Head Screw | 2 |
| 17..... | 202-0047 | #10-32 Hex Nut | 2 |
| 18..... | 202-0090 | 3/8"-16 Hex Nylon Insert Lock Nut, ZP | 4 |
| 19..... | 202-0102 | 1/4"-20 Hex Nylon Lock Nut, ZP | 3 |
| 20..... | 203-0003 | 3/8" Flat Washer, ZP | 8 |
| 21..... | 203-0010 | 3/8" Lock Washer, ZP | 4 |
| 22..... | 203-0054 | #10 Lock Washer, ZP | 2 |
| 23..... | 203-0104 | 10MM Lock Washer, ZP | 8 |
| 24..... | 226-0049(not shown)..... | Class IV Safety Cables..... | 2 |
| 25..... | 229-0512(not shown)..... | 1/2" Quicklink, ZP | 2 |
| 26..... | 229-0536(not shown)..... | 6.3MM Plastic Rivet..... | 6 |
| 27..... | 290-0437(not shown)..... | Black Cap Plug Receiver..... | 2 |

Important:

Use only genuine factory replacement parts on your baseplate. Do **NOT** substitute homemade or non-typical parts. If a bolt is lost or in need of replacement, for your safety and the preservation of your baseplate, be sure to use a replacement bolt of the same grade (In most cases it will be Grade 5, please reference the parts list above). Replacement parts may be ordered through your nearest Blue Ox® Dealer or Distributor. Failing to follow and/or altering these installation instructions in either installation or required equipment will void the manufacturer's warranty. Towing behind a non-motorized vehicle will void the warranty.

BX2411
2014-2023 Dodge Durango (Includes Adaptive Cruise Control)
Installation Instructions

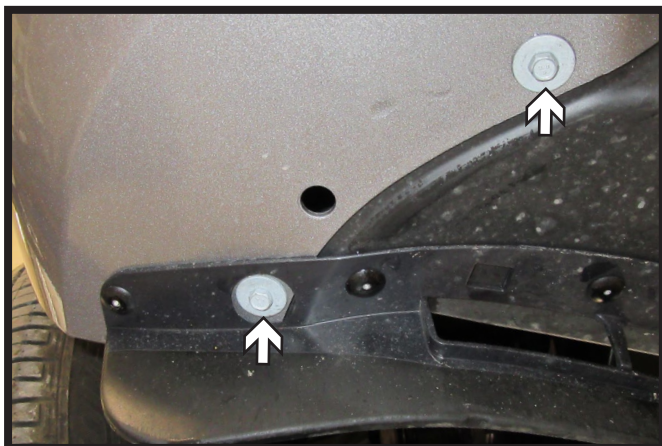
2014-2020 Fascia Removal



1. Remove the two (2) Phillips head push pins from the top edge of the fascia.



2. In the wheel well, using a 10MM socket, remove the top screw (gray). Using a 8MM socket, remove the lower screw (black). Then remove the two (2) plastic rivets (white). Do this on both sides of the vehicle.

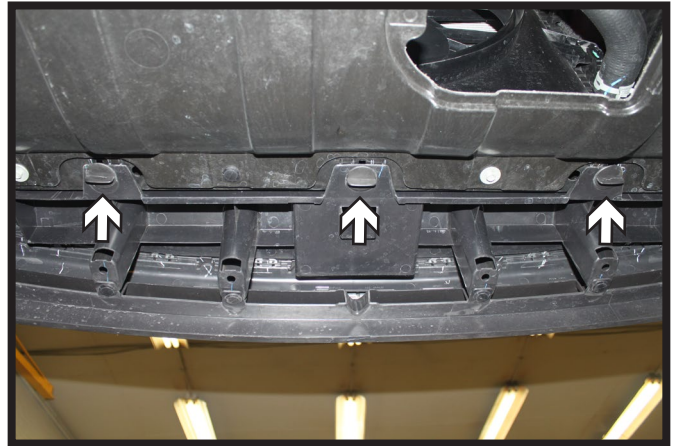


3. **Some Models:** Using a 10MM socket, remove the ten (10) bolts on the underside of the fascia. There are five (5) on each side of the vehicle.

BX2411
2014-2023 Dodge Durango (Includes Adaptive Cruise Control)
Installation Instructions

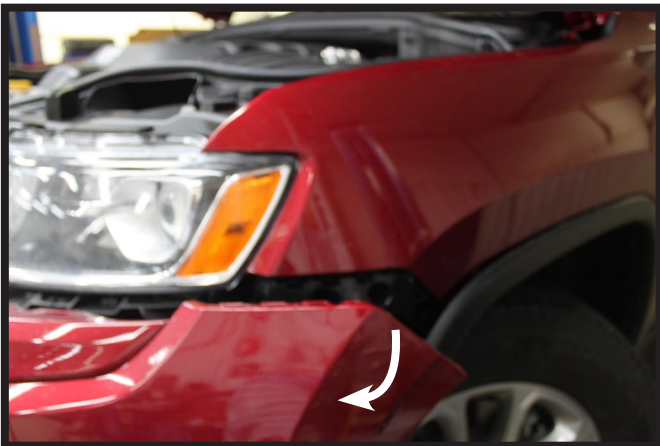


4. **Some Models:** Using a drill bit, drill out the two (2) metal rivets, there is one (1) on each side of the vehicle.

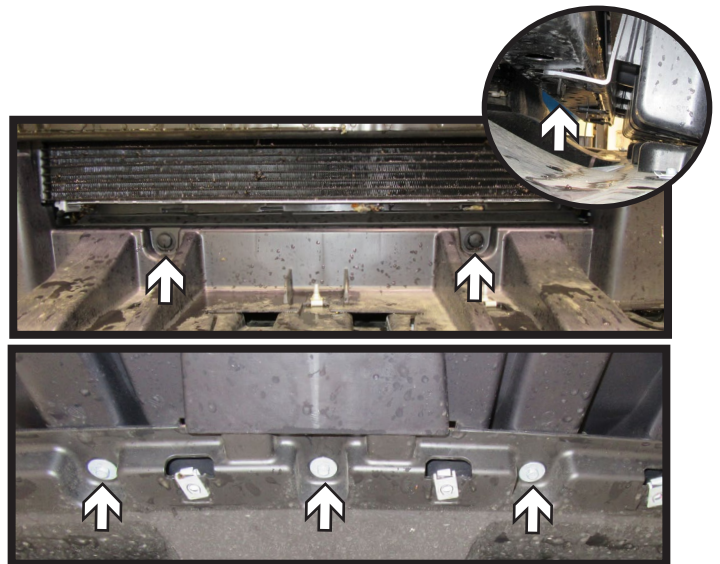


5. On the underside of the fascia, turn the three (3) locking knobs 90° to release.

Note: On some models this will need to be done after the fascia is removed during step #7.



6. Pull the top corners of the fascia out releasing the clips behind, continue working inward towards the grill releasing the clips under the headlights. Pull the fascia forwards disconnecting all electrical connections and set the fascia aside to be reinstalled later.



7. **Some Models:** Remove the two (2) push pins from the top of the plastic shielding (top). Then using a 10MM socket, remove the three (3) bolts from the bottom of the shielding (bottom).

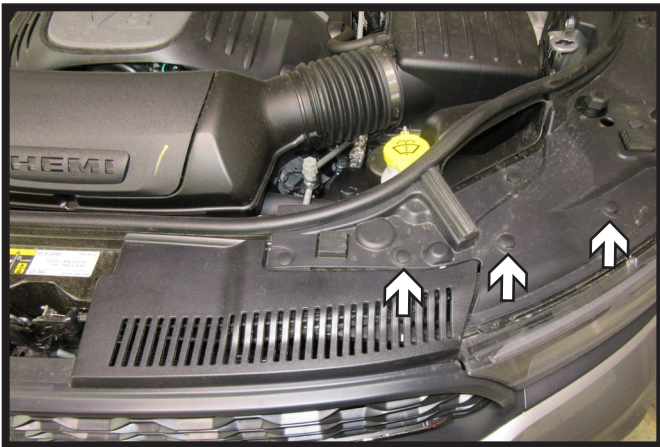
Note: If the three (3) locking knobs have not been turned 90°, do it at this time (inset).

Remove plastic shielding and set aside to be reinstalled later.

continue to page 9 for baseplate installation

BX2411
2014-2023 Dodge Durango (Includes Adaptive Cruise Control)
Installation Instructions

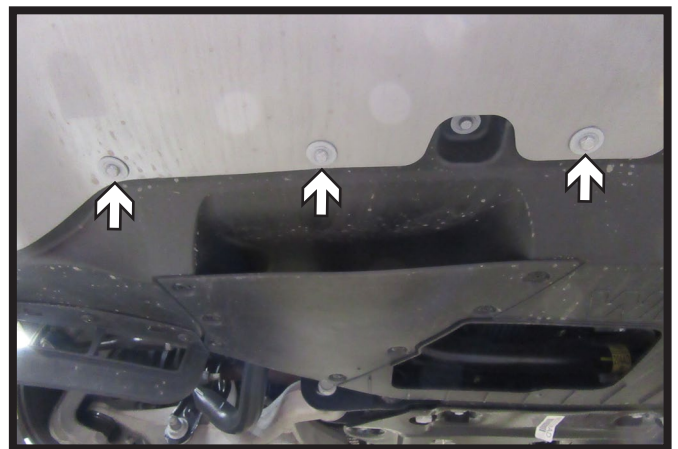
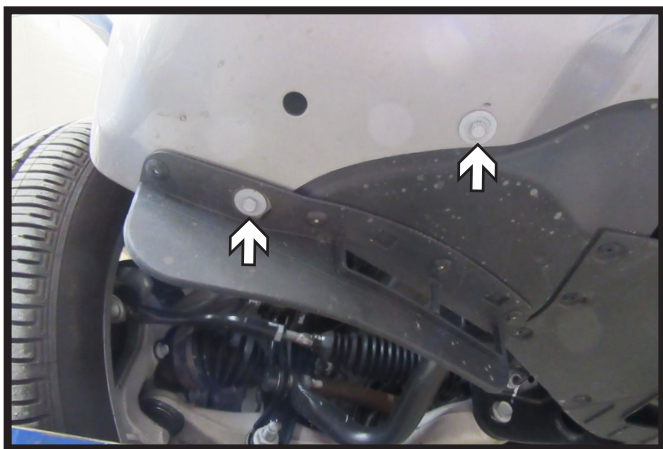
2021-2023 Fascia & Skip Plate Removal



1. Remove the six (6) push pins, three (3) on each side, from the top edge of the fascia.



2. In the wheel well, using a 10MM socket, remove the top screw (gray). Using a 8MM socket, remove the lower screw (black). Then remove the two (2) plastic rivets (white). Do this on both sides of the vehicle.

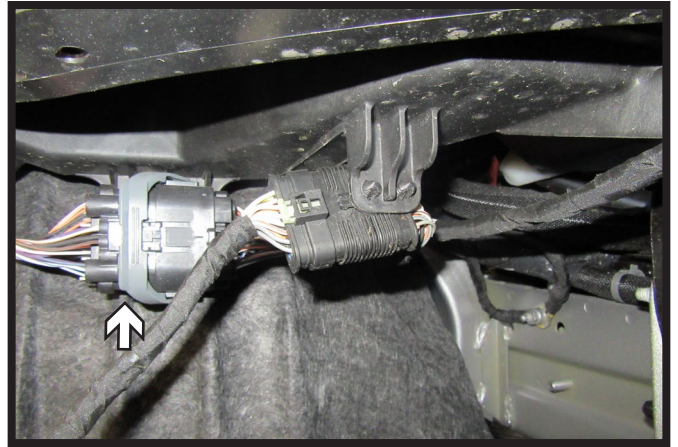


3. Using a 10MM socket, remove the ten (10) bolts on the underside of the fascia. There are five (5) on each side of the vehicle.

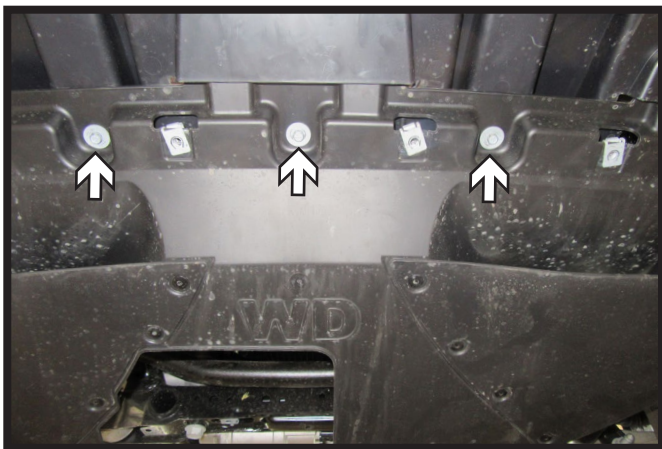
BX2411
2014-2023 Dodge Durango (Includes Adaptive Cruise Control)
Installation Instructions



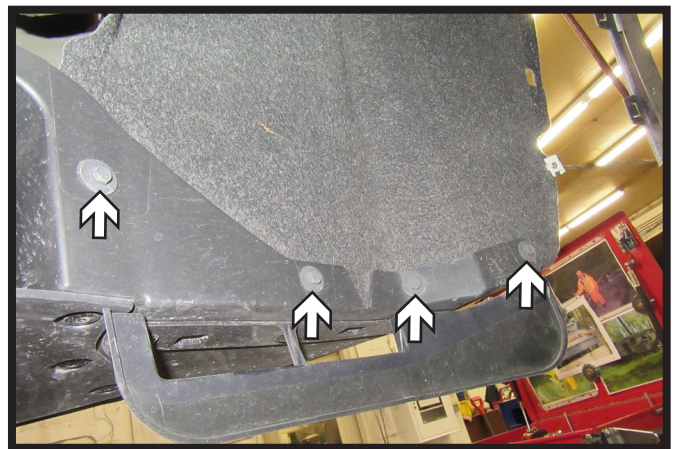
4. Using a 1/4" drill bit, drill out the aluminum pop rivet in front of the tire. Do this on both sides of the vehicle.



5. Pull the top corners of the fascia out releasing the clips behind, continue working inward towards the grill releasing the clips under the headlights. Pull the fascia forwards, unplug the electrical on the passenger side of the vehicle. Remove fascia and set aside to be reinstalled later.

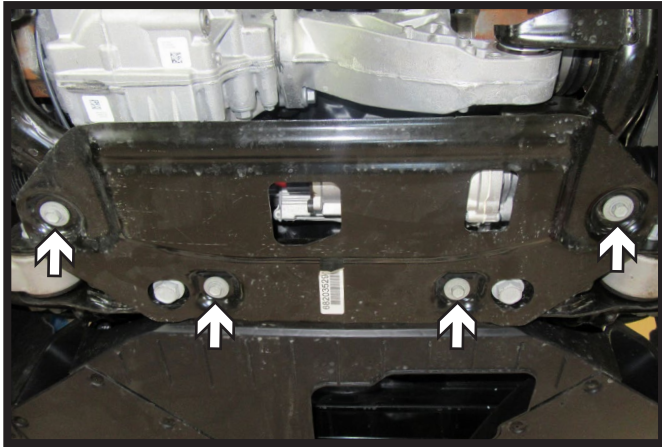


6. Using a 10MM socket, remove the three (3) center bolts from the front of the belly pan.

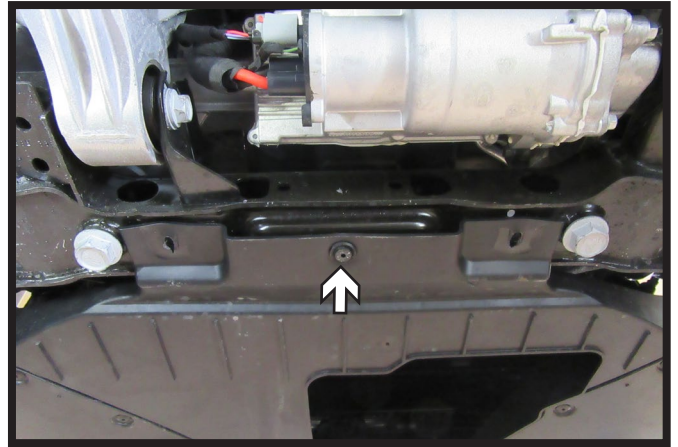


7. Using an 8MM socket, remove the four (4) bolts in front of the tire. Do this on both sides of the vehicle.

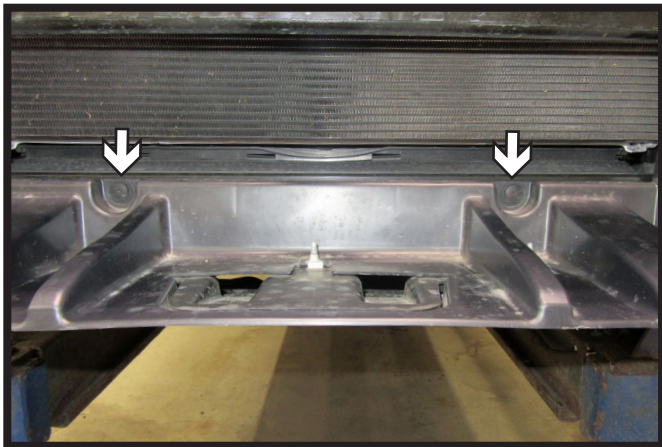
BX2411
2014-2023 Dodge Durango (Includes Adaptive Cruise Control)
Installation Instructions



8. Using a 13MM socket, remove the four (4) bolts from the metal belly pan. Remove metal belly pan and set aside to be reinstalled later.



9. Remove the one (1) push pin from the back center of the plastic belly pan. Remove plastic belly pan and set aside to be reinstalled later.



10. Remove the two (2) push pins from the top of the plastic shielding.



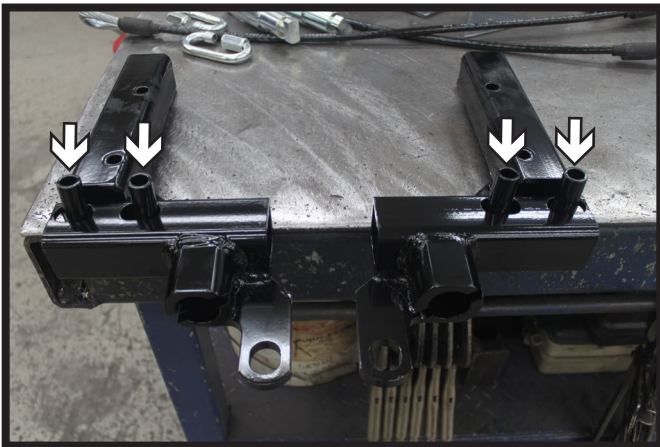
11. Turn the three (3) locking knobs on the bottom of the plastic shielding 90° to remove. Remove plastic shielding and set aside to be reinstalled later.

continue to page 9 for baseplate installation

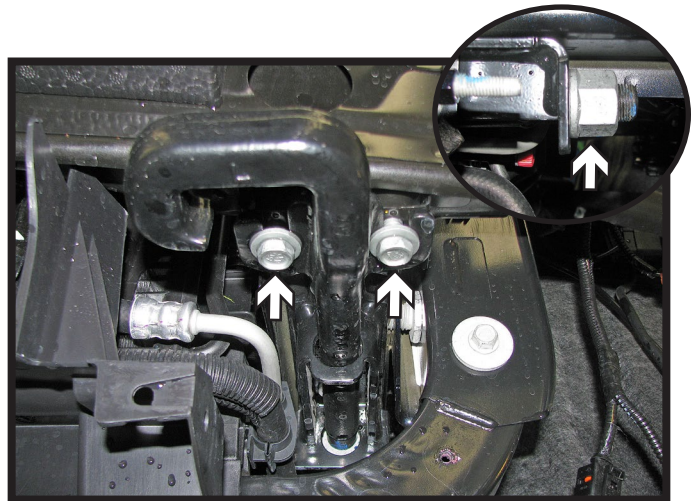
BX2411

2014-2023 Dodge Durango (Includes Adaptive Cruise Control) Installation Instructions

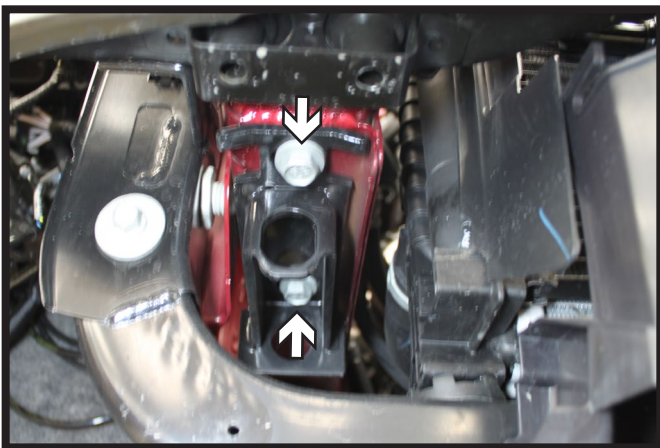
Baseplate Installation



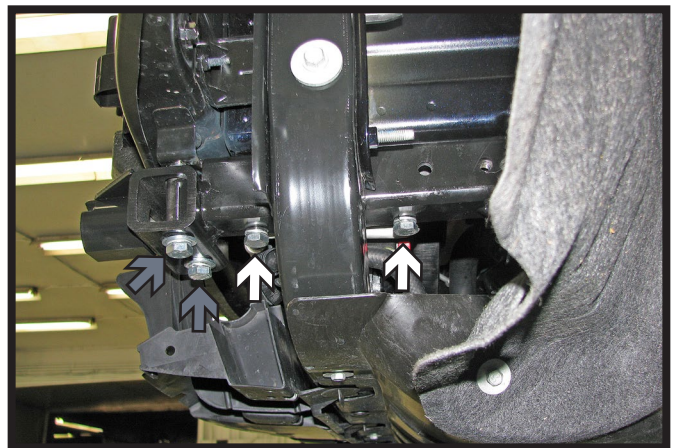
1. Prior to installing the baseplate on the vehicle, install the appropriate spacer tubes into the slots of the baseplate. The tubes will vary depending on whether the vehicle is equipped with tow hooks or not. Reference page 3.



2. **Models equipped with tow hooks:** Using a 16MM socket, remove the two (2) bolts from the front side. Then using a 30MM socket or wrench, remove the nut from the backside of the tow hook. Remove the tow hook from the vehicle. Do this on both sides of the vehicle.



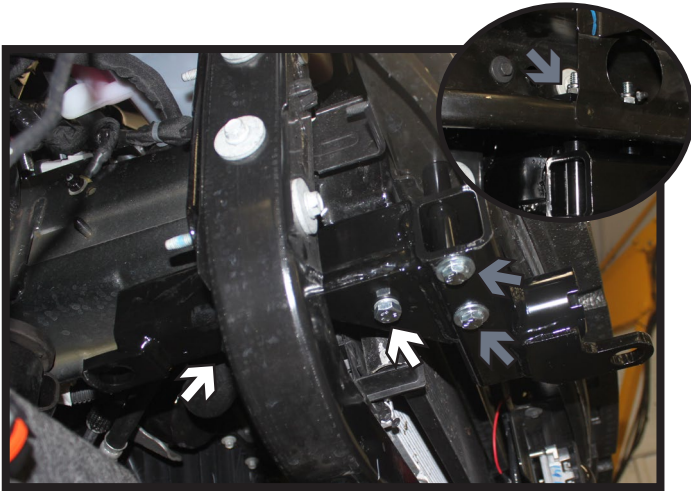
3. **Models equipped with tow hooks:** Using a 16MM socket, remove the two (2) bolts from the tow hook bracket. Remove the tow hook bracket from the vehicle. Do this on both sides of the vehicle.



4. **Models equipped with tow hooks:** Slide the baseplate into position on the frame. Install two (2) 10MM-1.5 x 80MM bolts with 10MM lock washers into the bottom holes (white). Install 10MM-1.5 x 100MM bolts with 10MM lock and 3/8" flat washers through the baseplate into the bumper on both the front holes (gray). Tighten all hardware. Do this on both sides of the vehicle.

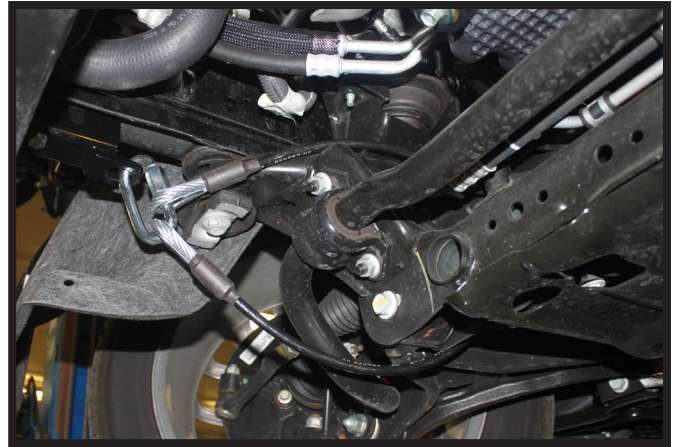
**** Use Loctite® Red on all bolt threads and tighten all bolts to the appropriate torque. ****

BX2411
2014-2023 Dodge Durango (Includes Adaptive Cruise Control)
Installation Instructions

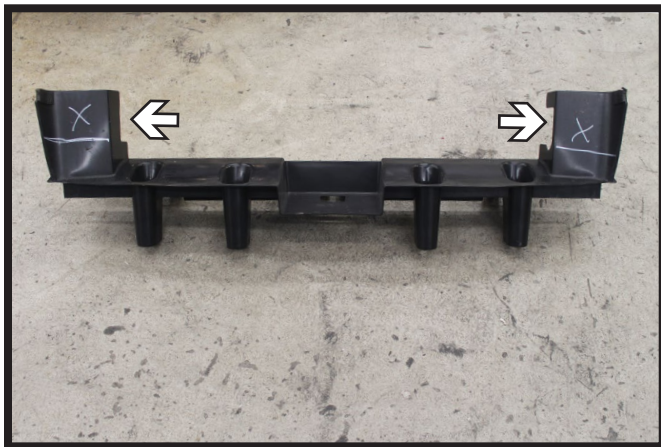


5. **Models without tow hooks:** Slide the baseplate into position on the frame. Install two (2) 10MM-1.5 x 80MM bolts with 10MM lock washers into the bottom holes (white). Insert 3/8"-16 x 4-1/2" bolts with 3/8" lock and flat washers into the front holes with the locking plate and 3/8"-16 lock nuts on top of bumper (inset). Tighten all hardware. Do this on both sides of the vehicle.

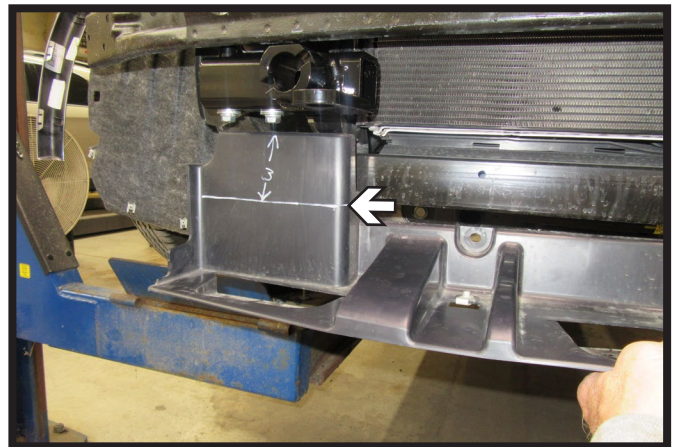
**** Use Loctite® Red on all bolt threads and tighten all bolts to the appropriate torque. ****



6. Attach the permanent baseplate safety cables to the provided convenience link on the baseplate. The photo shows the recommended installation of the cables to frame of vehicle. Additional options may interfere with suggested mounting; in this case, secure the cables to a solid piece of the frame as described in the General Information sheet. Be sure the safety cables do not rub against any hoses or moving parts. Do this on **BOTH** sides of the vehicle.

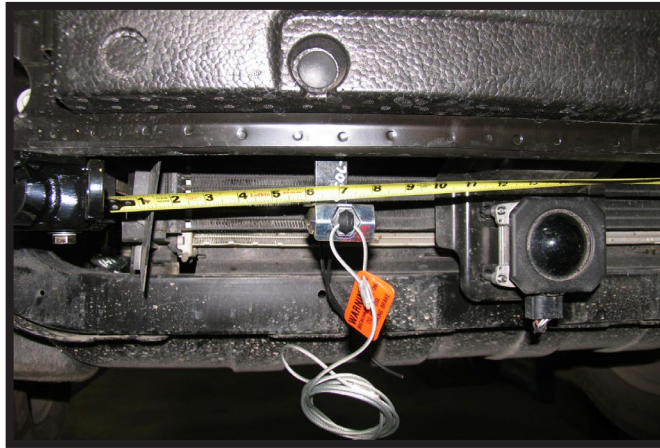


- 7a. **2014-2020 Models:** Trim the plastic support on the backside of the fascia as shown for baseplate clearance.



- 7b. **2021 Models:** Hold the plastic shield up to the push pin holes and trim shield approximately 3" as shown for baseplate clearance.

BX2411
2014-2023 Dodge Durango (Includes Adaptive Cruise Control)
Installation Instructions



15. **Optional Breakaway:** In the desired location, install the bracket to the bumper with a #10-16 x 1" self drilling screw. Attach the breakaway to the bracket with a 1/4"-20 x 3/4" bolt and 1/4"-20 lock nut.



16. Hold the fascia as close to its original position, mark and trim the fascia around the convenience links and attachment tabs. Reinstall belly pan, plastic shield, fascia and reconnect all electrical connections. Using the rivet gun, replace the rivets that were removed during the fascia removal.

BX2411
2014-2023 Dodge Durango (Includes Adaptive Cruise Control)
Installation Instructions

CUSTOMER SERVICE COMMITMENT

Blue Ox® is committed to providing you with exceptional customer care throughout your lifetime with our products. Our team is here to assist you with any questions you may have regarding the performance of your product. Simply call (402) 385-3051 and you can speak with our technical service team.

Additionally, please visit our website to see which rallies our Destination America team will be attending. For a nominal fee, our service technician will service your towing system to ensure it's in proper working condition. Also, as a commitment to our customers, should you visit our factory, you can stay at our full service Blue Ox® campground at no charge along with enjoying a factory tour.

Again, thank you for being our customer and for the confidence you have shown in the performance of our products. It is because of customers like you we enjoy the success we have today.



© 2016 Blue Ox
One Mill Road, Industrial Park
Pender, Nebraska 68047
Phone: (402) 385-3051
Fax: (402) 385-3360
www.blueox.com

General Information

1. Ensure that your product(s) are registered online at www.blueox.com. It is crucial to register your product(s) so that you may be alerted of product offerings, updates, upgrades, maintenance and safety bulletins, and/or recalls.
2. **It is the owner's responsibility to inspect all towing equipment for cracked welds, missing or worn parts and loose bolts before each towing trip.** Be sure to use Loctite® Red on all bolts and tighten to the recommended specifications.
3. **It is the owner's responsibility to hook up all towing equipment per manufacturer's instructions/recommendations.**
4. Remove the attachment tabs when not in use (if applicable).

Notice To Baseplate Installer

1. It is YOUR responsibility to watch for:

- Oil cooler and air conditioner lines
- Electrical wires and hoses
- Missing parts or attaching points on the frame

** If the baseplate is improperly installed and is against a wire or hose, it could cause fluid leaks or electrical shorts some time after the actual baseplate installation.

Permanent Baseplate Safety Cable Installation

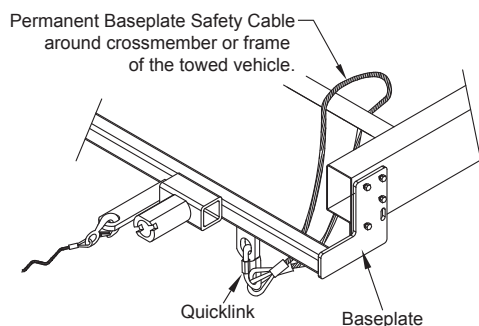
Permanent baseplate safety cables are strongly recommended when towing a vehicle with a tow bar. The principle function of the permanent baseplate safety cables is to prevent the towed vehicle from breaking loose in the event the connection between the frame of the towed vehicle and the baseplate fails or becomes disconnected. The cables must be connected from the baseplate to the frame rail or cross member of the vehicle's frame. The illustrations below show the possible arrangements recommended by Blue Ox®. Each permanent baseplate safety cable must have an adequate weight rating for the towing system. The weight rating of the two (2) cables together will not qualify.

Do not mount the permanent baseplate safety cables against wires, hoses or brake lines.

These permanent baseplate safety cables should remain installed as long as the baseplate is installed on the vehicle. Permanent baseplate safety cables are to be used in conjunction with, and NOT a replacement for legally required safety cables attaching the towed vehicle to the towing vehicle.

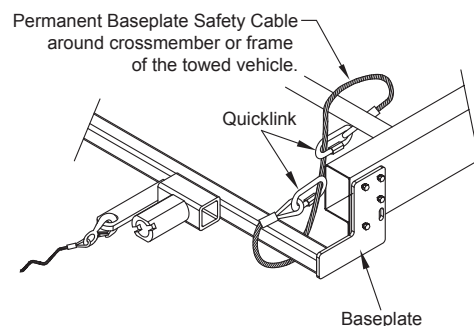
Option #1

(Baseplates with Convenience Link Tabs)



Option #2

(Baseplates with out Convenience Link Tabs)



BLUE OX ORIGINAL PURCHASERS THREE YEAR LIMITED WARRANTY

Automatic Equipment Manufacturing Company ("Automatic") warrants to the original (first) retail purchaser that this product, manufactured by Automatic, shall be free from defect in material and workmanship under normal use and service for a period of three years from the date of delivery.

During said three-year period, Automatic will repair or replace any parts that have been returned by the original purchaser, to the factory, transportation prepaid, and in Automatic's sole and absolute opinion found to be defective.

Limitations on Warranty Coverage:

Coverage under this warranty will be valid only if the customer warranty card is returned by the original purchaser within 30 days of purchase.

Coverage under this warranty will be effective only when a copy of the original invoice, showing date and place of purchase, accompanies any claim for warranty. This warranty is NON TRANSFERABLE.

This limited warranty will not cover, in any way or form, any alleged damages caused by incorrect or improper installation, improper use, modification or neglect of product, failure to properly service and maintain, misuse, act of God, accident or failure of the user to follow guidelines contained in the instructional material provided by Automatic.

This warranty does not cover normal wear and tear, paint or rust.

Warrantor assumes no responsibility to the owner for loss of use of product, loss of time, inconvenience or any other damage consequential or otherwise. Including, but not limited to mileage, expense of transporting of product, return shipping expense, mechanics travel time, telephone, road service, towing, and rental during repairs, travel, lodging, loss or damage to personal property or loss of earnings.

REPAIR OR REPLACEMENT AS SET FORTH IN THIS LIMITED WARRANTY IS THE SOLE EXCLUSIVE REMEDY OF THE PURCHASER. AUTOMATIC SHALL NOT BE LIABLE FOR ANY INCIDENTAL OR CONSEQUENTIAL DAMAGES FOR BREACH OF ANY EXPRESS OR IMPLIED WARRANTY ON THIS PRODUCT. EXCEPT TO THE EXTENT PROHIBITED BY APPLICABLE LAW, ANY IMPLIED WARRANTY OF MERCHANTABILITY OR FITNESS FOR A PARTICULAR PURPOSE ON THIS PRODUCT IS LIMITED IN LENGTH TO THE DURATION OF THIS WARRANTY.

Please visit <http://blueox.com/warranty/> to register your warranty



BLUE OX